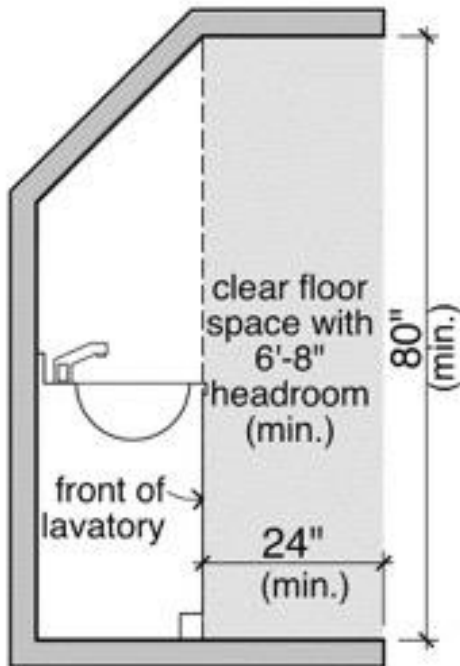


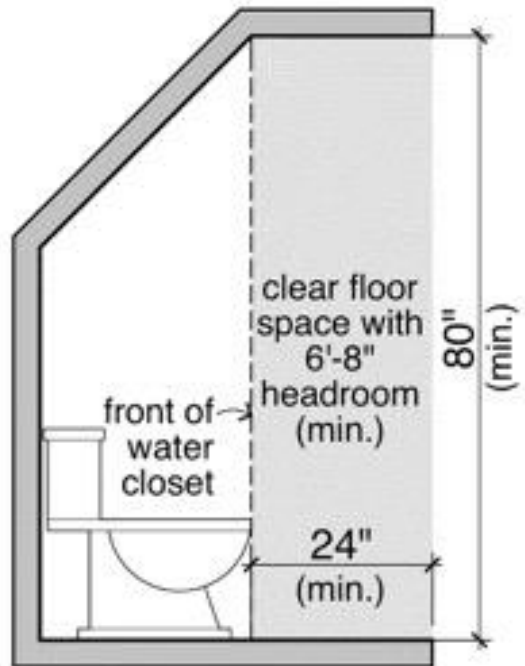


CITY OF PORTLAND
Permitting and Inspections Department

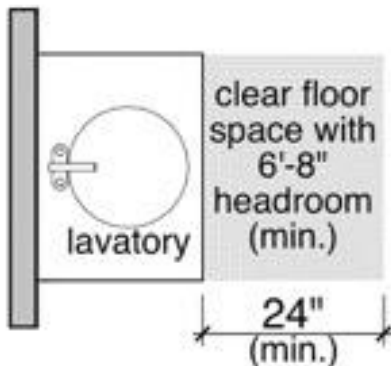
Required minimum fixture clearances and ceiling heights for residential toilet and sink spaces:



SECTION VIEW

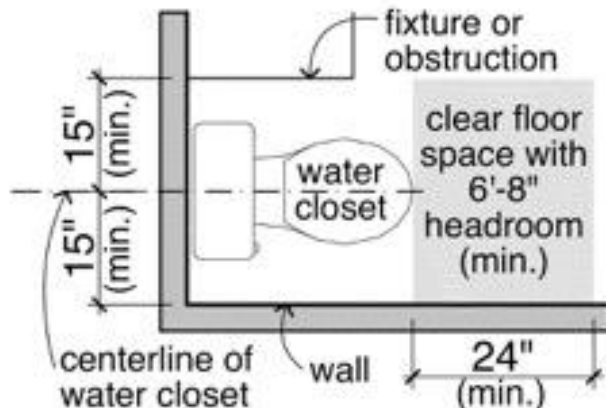


SECTION VIEW



PLAN VIEW

LAVATORY
(sink)



PLAN VIEW

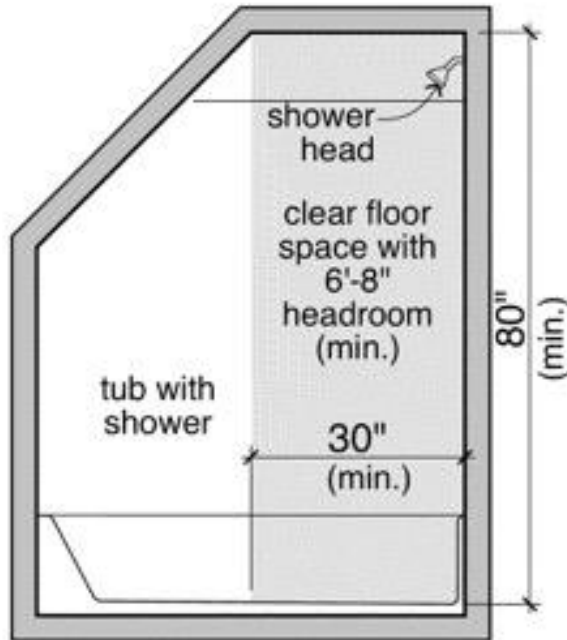
WATER CLOSET
(toilet)

Reference 2015 International Residential Code, Section R305 for ceiling heights.
Reference 2015 International Residential Code, Section R307 and 2015 Uniform Plumbing Code, Sections 402.5 and 408.6 for minimum fixture clearances.

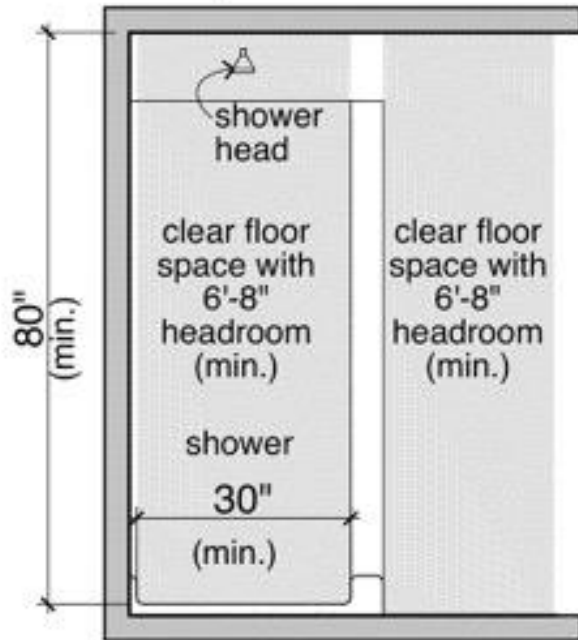


CITY OF PORTLAND
Permitting and Inspections Department

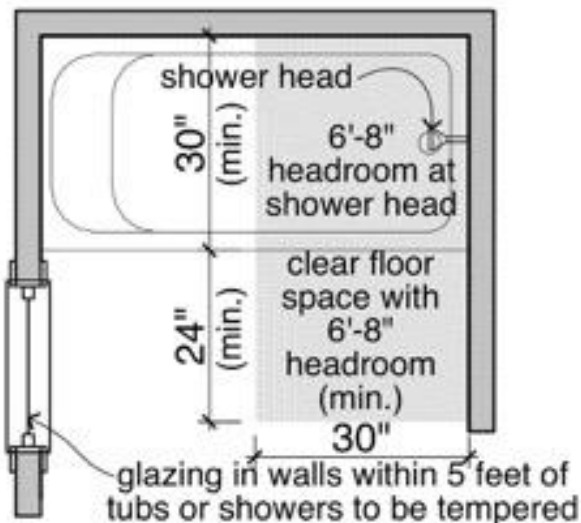
Required minimum fixture clearances and ceiling heights for residential bathtub and shower spaces:



SECTION VIEW

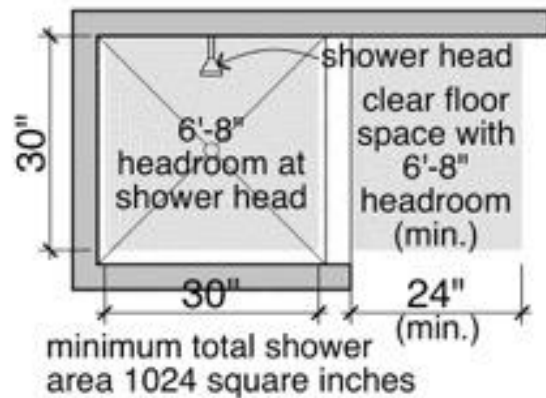


SECTION VIEW



PLAN VIEW

TUB WITH SHOWER



PLAN VIEW

SHOWER

Reference 2015 International Residential Code, Section R305 for ceiling heights.
Reference 2015 International Residential Code, Section R307 and 2015 Uniform Plumbing Code, Sections 402.5 and 408.6 for minimum fixture clearances.
Reference 2015 International Residential Code, Section R308 for glazing.