

# LUMINOUS ARBOR



# LUMINOUS ARBOR

---

## ABSTRACT

A successful work of public art acts as a frame. It allows one to see the entirety of a site, the architecture, and community with fresh eyes. This act of renewed seeing is the point of departure for the installation: *Luminous Arbor*. The sculpture provides a rich and layered conceptual experience in a simple iconic form.

## THE SCULPTURE

In its simplest interpretation, *Luminous Arbor* is a light fixture. It is composed of a cluster of streetlights in keeping with familiar public lighting features. Here, however, the lights come to life. Rising from a single foundation, the light poles gradually diverge into individual intertwining paths – abandoning a static vertical posture to join together into a vibrant and life-like form.

Suggesting a tree, a swarm, or a choreographed dance, *Luminous Arbor* literally illuminates, but also suggest that the ordinary can become extraordinary, and in fact that the ordinary itself *is* extraordinary. In this way *Luminous Arbor*. will both illuminate create a visual anchor at Woodfords Corner and the surrounding communities.

## CONTEXT

Woodfords Corner can be a daunting and frenetic location. *Luminous Arbor* contributes an anchoring element for the surrounding neighborhoods. Its tree-like qualities will create an overhead canopy similar to adjacent trees. This will help create a pedestrian friendly environment while the cluster of glowing lights and brushed aluminum poles will provide a dynamic dialogue with the surrounding community.



# SPECIFICATIONS

# LUMINOUS ARBOR

---

## SPECIFICATIONS

### Materials

Poles	Round tapered aluminum with a brushed finish. Poles will be 5" diameter at base and 3" diameter at top. Pole height is 20" and wall thickness is .188"
Truss arms	2" round aluminum pipe with a 1/8" wall and a brushed finish
Light fixtures	Powder coated aluminum w/acrylic globe supplied with 110V on a dimmer and photocell. Fixtures will have a standard E26 base. Bulbs will be dimmable 60W LED 2700K (warm light similar to incandescent)
Foundation	Reinforced concrete with 3/4 threaded anchor bolts in 8 1/2" bolt circles with electrical conduit for power supply

### Measurements

Entire sculpture	12x12x21 ft.
Foundation	36" diameter and 6" above grade (final design is the responsibility of The City of Portland)

### Fabrication

The entire artwork will be fabricated in the artist's studio and delivered to site by the artist. Foundation design, foundation pouring, sculpture installation, and electrical work will be the responsibility of The City of Portland.

### Maintenance

The work will be virtually maintenance free. Bulbs should be replaced as needed (approx. every 10 years). This should be integrated into the site's maintenance plan. Every five years the foundation and connecting bolts should be checked for security and degradation.

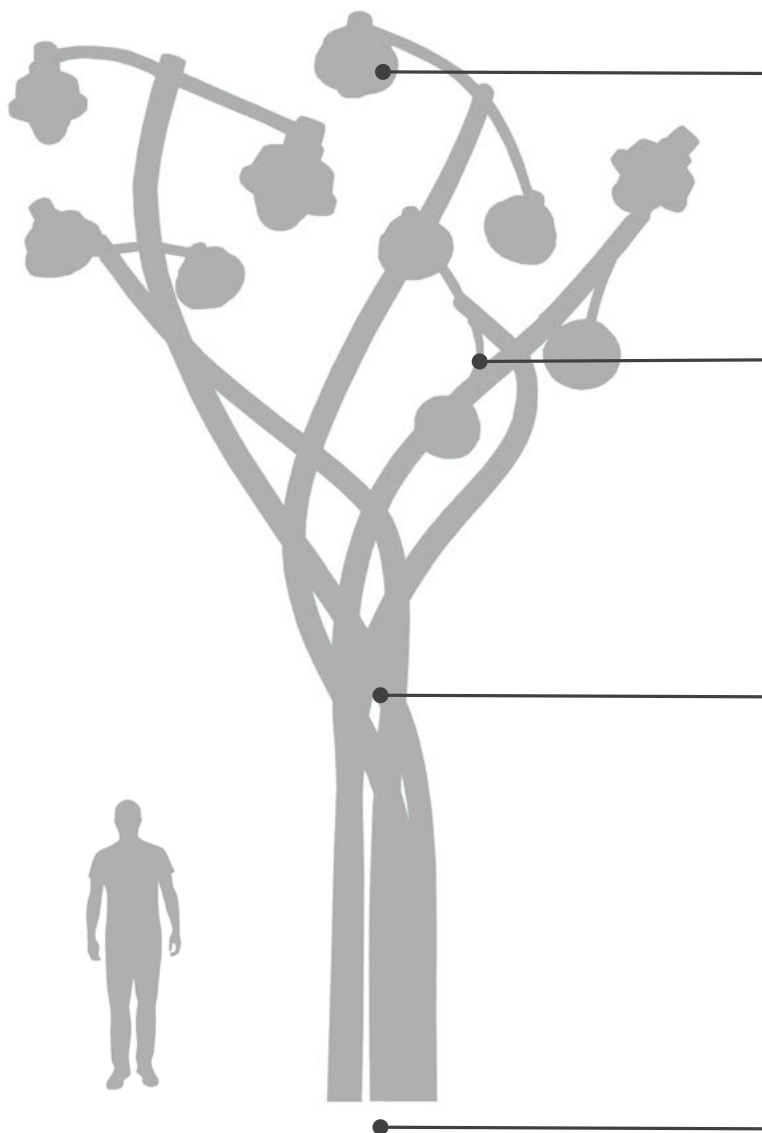
### Safety and Security

The entire work will be fabricated from standard municipal grade poles and fixtures. Safety precautions shall be the same as any other street light in the area. Minimum distance from grade to lowest overhead branch-like form will be ten feet.

# LUMINOUS ARBOR

---

## SPECIFICATIONS



Fixtures: 12"x16" with protective frosted acrylic jar, 110V with dimmable led bulb.

2" diameter round aluminum truss arms

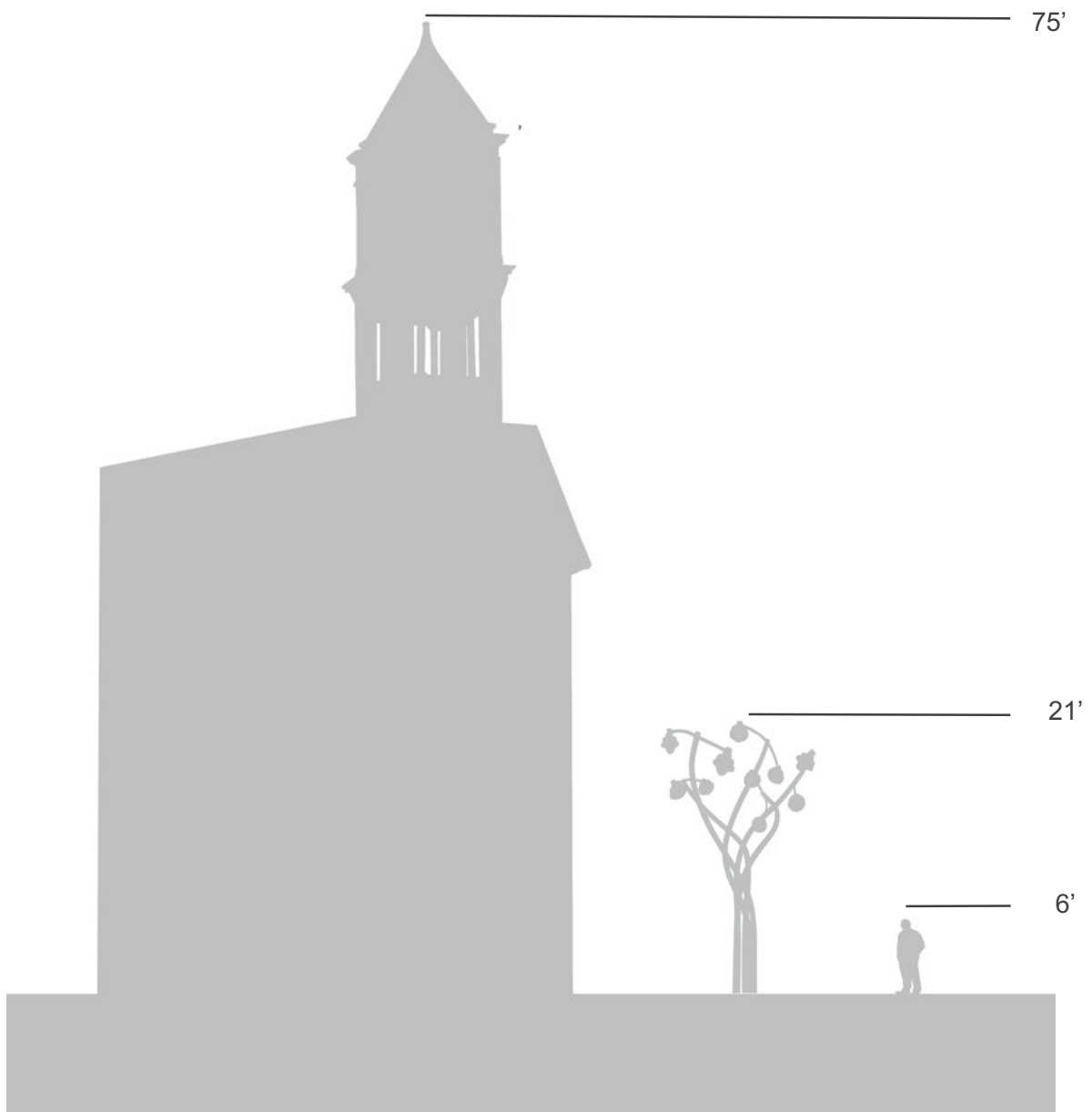
Ea. pole: 5" diameter at base, 3" diameter at top, 20' ft long with a 8 1/2 inch bolt circle on an anchor base.

Foundation made from reinforced concrete: 36 inch diameter and 6 inches above grade.

# LUMINOUS ARBOR

---

## SCALE

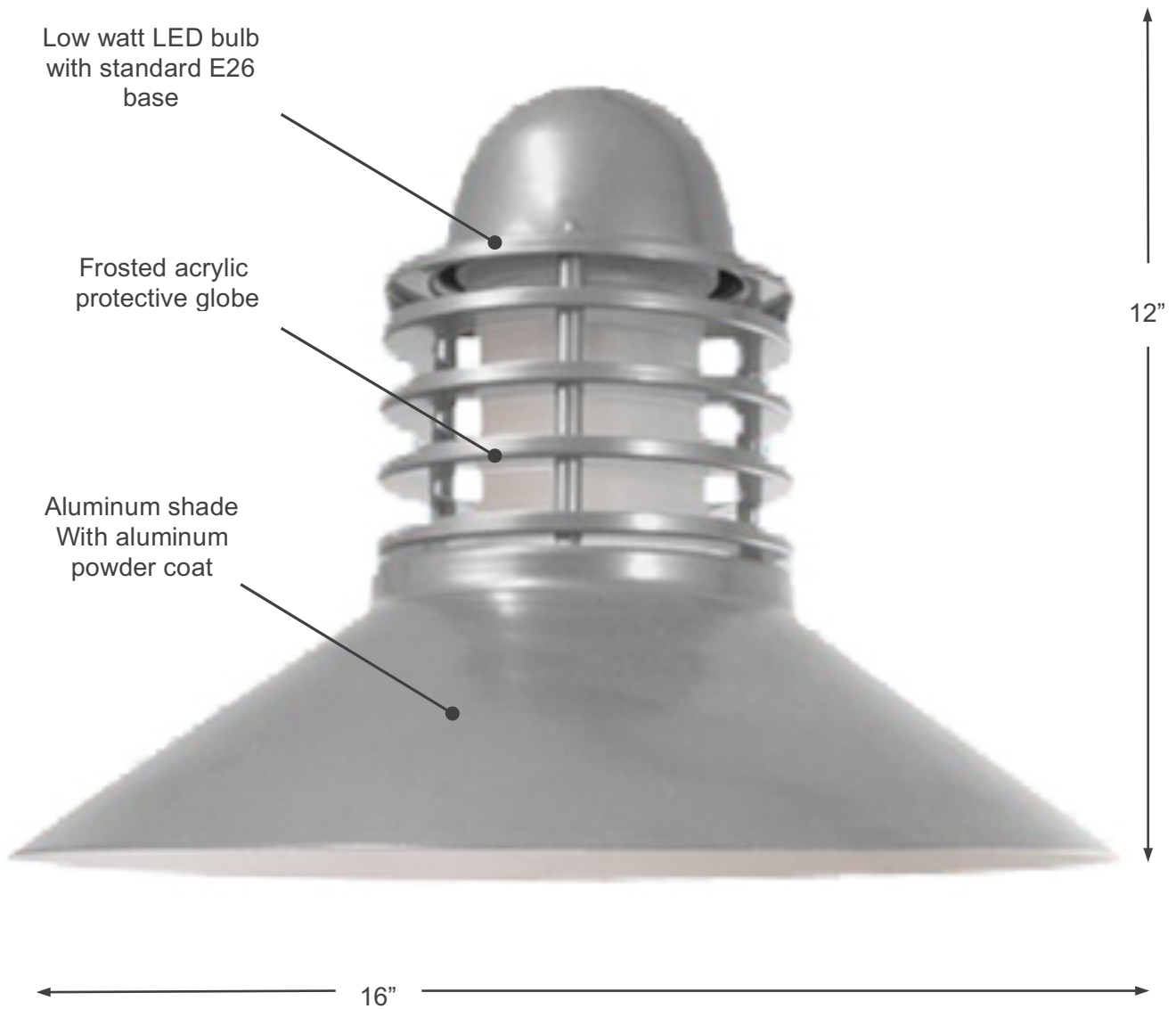




# LUMINOUS ARBOR

## FIXTURE DETAILS

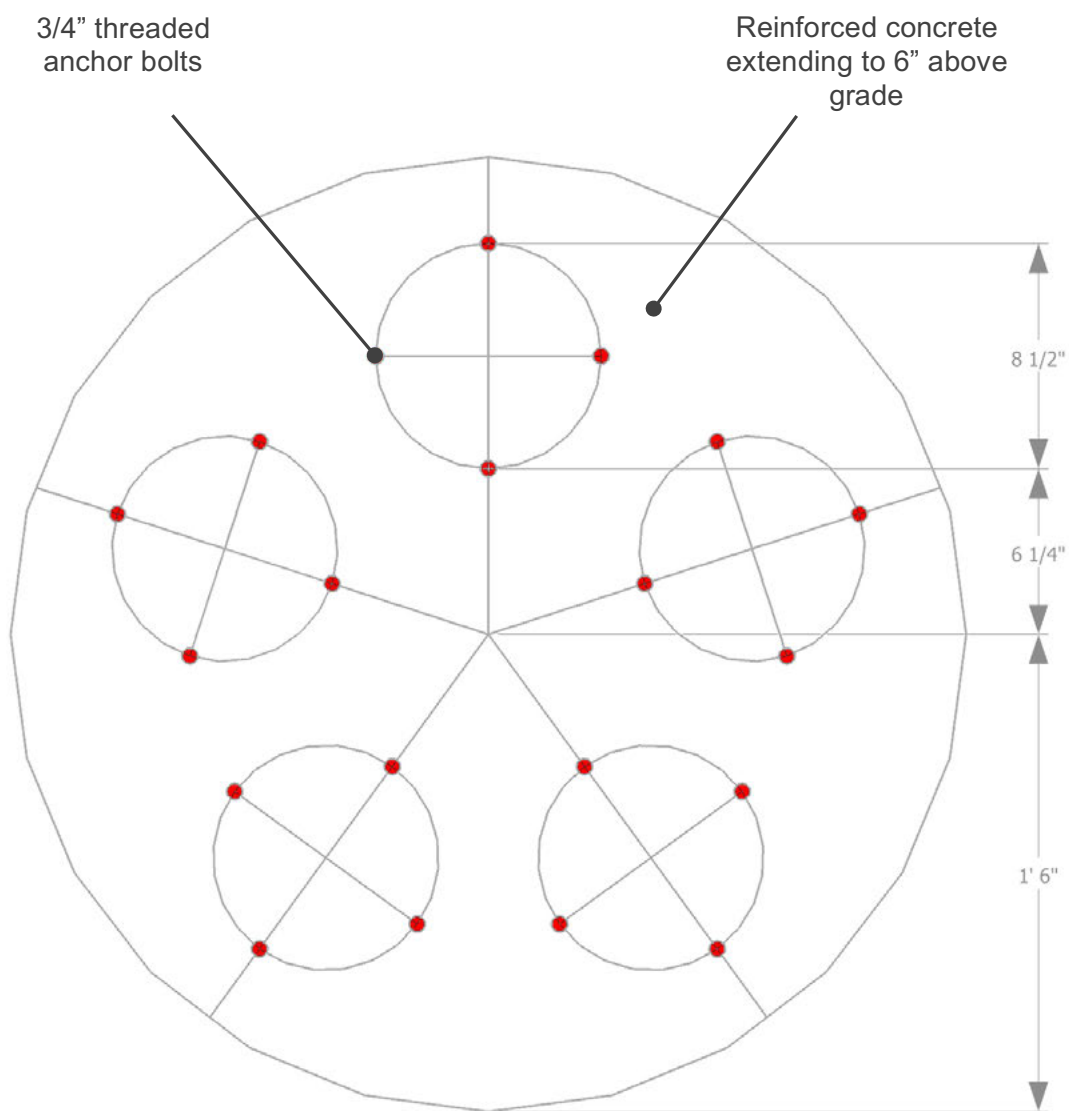
---



# LUMINOUS ARBOR

---

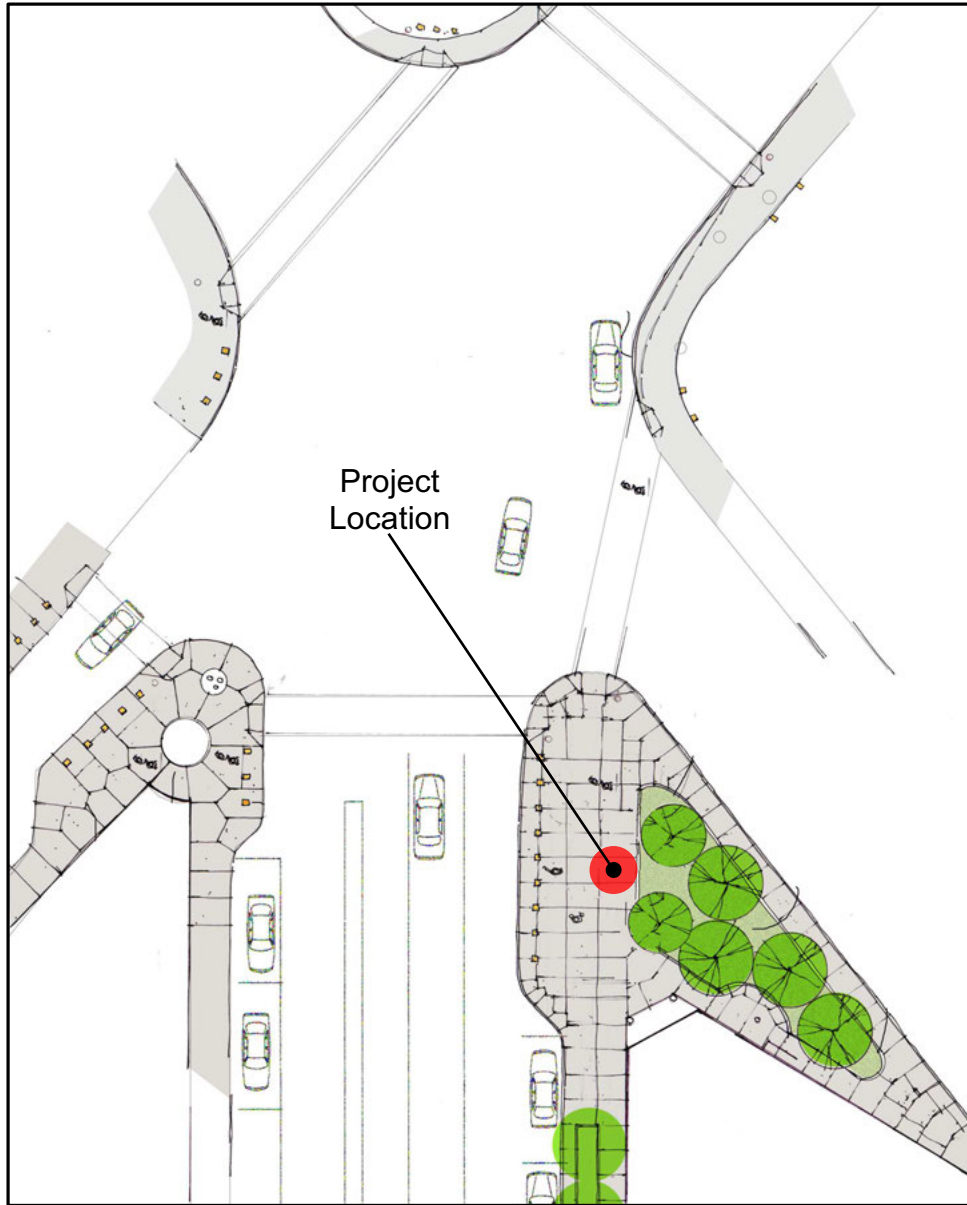
## FOUNDATION DETAILS



# LUMINOUS ARBOR

---

## LOCATION



# LUMINOUS ARBOR

---

## DETAILS

### Schedule

Initial design & presentation	Aug 2016
Final design documents & presentation	Jan 2017
Fabrication	March 2017 – June 2017
Installation	Summer 2017
Follow-up	Fall 2017

### Services

#### **Design, Fabrication, Delivery**

Aaron T Stephan  
142 Pearl Street  
Portland, Maine 04101  
207 409 4690  
astephan@meca.edu

#### **Foundation, Installation, Electrical**

City of Portland

# LUMINOUS ARBOR

---

## BUDGET

### Materials

Aluminum light poles	\$3,500.00
Light fixtures	\$3,500.00
Misc.	\$2,500.00

### Fabrication

Alter poles and fabricate light arms	\$9,750.00
--------------------------------------	------------

### Site Work

Foundation (labor & materials)	City of Portland
Electrical	City of Portland
Installation (labor)	City of Portland

### General Items

Delivery	\$250.00
Insurance	in-kind artist contribution
Studio	in-kind artist contribution
Documentation	\$500.00

**Subtotal**      **\$20,000.00**

Contingency	\$0
Artist fee (20%)	in-kind artist contribution

**Total**      **\$20,000.00**