

City of Portland  
Health & Human Services Department  
Social Services Division

PORTLAND HOMELESS SHELTERS

**Total Number of Individuals Residing in Shelters per Night:**

	<b>November 2014</b>	<b>November 2015</b>
<b>ADOLESCENTS</b>	23 Individuals	20 Individuals
<b>FAMILIES</b>	172 Individuals 61 Average Families	114 Individuals 39 Average Families
<b>ADULTS</b>	289 Individuals	271 Individuals
<b>Total</b>	<b>484 Individuals</b>	<b>405 Individuals</b>

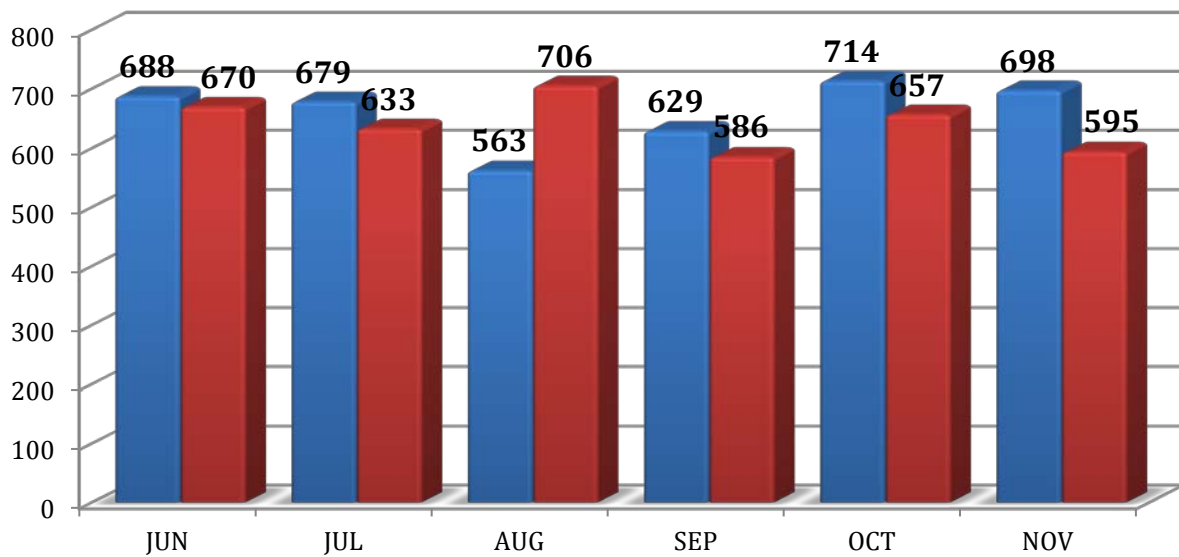
30 Days in the Month of November

This information is also posted on the City of Portland's website each month.  
To view this information, please go to  
<http://www.portlandmaine.gov/537/Emergency-Shelter-Assessment-Committee>

Prepared by:  
City of Portland  
Health & Human Services Department  
Social Services Division

**PREBLE STREET JOE KREISLER TEEN SHELTER  
ADOLESCENT BEDS USED  
NOVEMBER 2015**

■ 2014 ■ 2015



	<b>Jun</b>	<b>Jul</b>	<b>Aug</b>	<b>Sep</b>	<b>Oct</b>	<b>Nov</b>
<b>2014</b>	688	679	563	629	714	698
<b>2015</b>	670	633	706	586	657	595
<b>Percent</b>	-3%	-7%	+25%	-7%	-8%	-9%

**PREBLE STREET  
Joe Kreisler Teen Shelter**

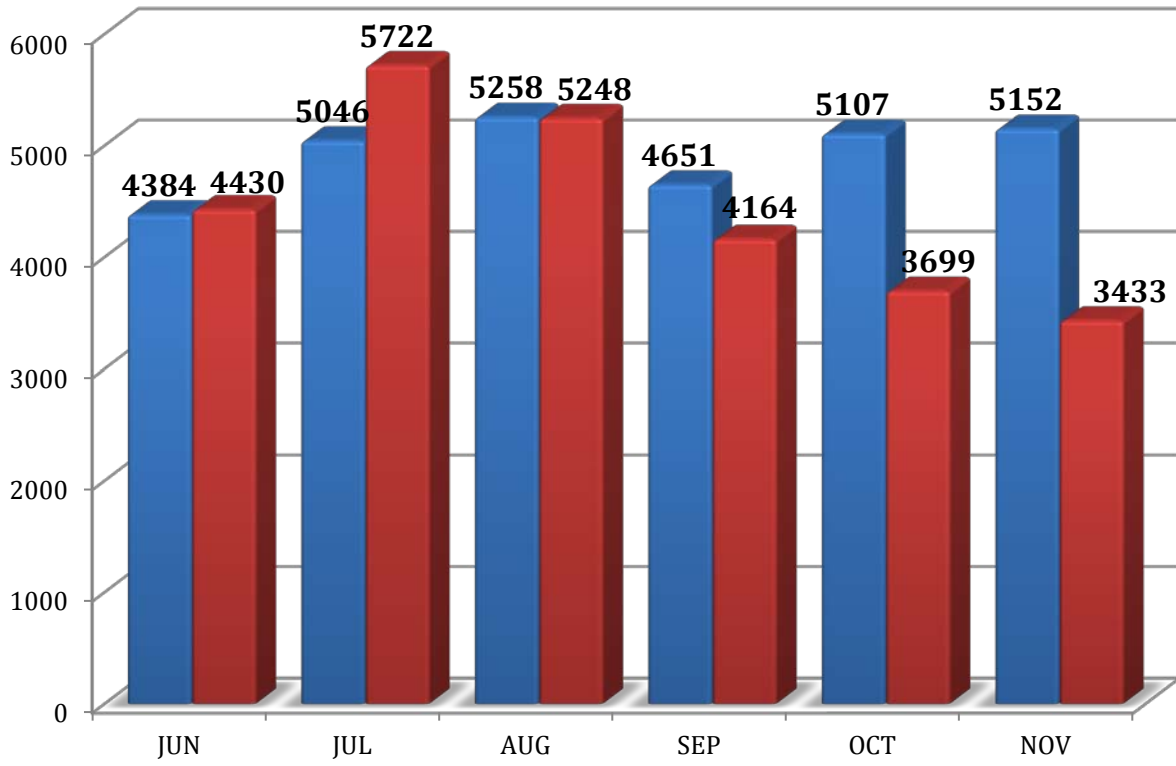
**24 Beds**

Capacity	24
Month Total	657
<b>Avg/Night</b>	<b>21</b>
Highest Night	24
Lowest Night	12

<b>UNDUPLICATED YOUTH:</b>	<b>45</b>
<b>TOTAL NEW INTAKES:</b>	<b>8</b>
<b>TOTAL HOUSING PLACEMENTS:</b>	<b>11</b>
• <b>TH PLACEMENTS</b>	<b>1</b>
• <b>PH PLACEMENTS</b>	<b>10</b>
<b>TOTAL RETURNS:</b>	<b>0</b>
<b>*EXPERIENCING HOMELESSNESS FOR THE 1<sup>ST</sup> TIME</b>	<b>0</b>
(*BASED ON SELF-REPORTING)	
<b>TOTAL YOUTH TURNED AWAY DUE TO REACHING CAPACITY</b>	<b>10</b>

# PORTLAND, CITY-WIDE FAMILY BEDS USED NOVEMBER 2015

■ 2014 ■ 2015



	Jun	Jul	Aug	Sep	Oct	Nov
<b>2014</b>	4384	5046	5258	4651	5107	5152
<b>2015</b>	4430	5722	5248	4164	3699	3433
<b>Percent</b>	+1%	+13%	-0.2%	-10%	-28%	-33%

**FAMILY SHELTER** **104 Beds**  
**Hotels- Overflow** **4 Rooms**

**FAMILY CRISIS SHELTER** **16 Beds**

*SteppingStones closed in April, 2015, dropping overall beds available*

**PORTLAND, CITY-WIDE  
FAMILY SHELTER STATISTICS  
NOVEMBER 2015**

	<i>Families- City* (incl. overflow)</i>	City	GA Hotels	Family Crisis	FC Hotel	Beds Used Per Month
Capacity		104	4 Rms	16		
Month Total	1168	867	23	301	0	3433
<b>Avg/Night</b>	<b>39</b>	<b>29</b>	<b>2</b>	<b>10</b>	<b>0</b>	<b>114</b>
Highest Night	43	33	3	12	0	135
Lowest Night	35	25	0	9	0	100

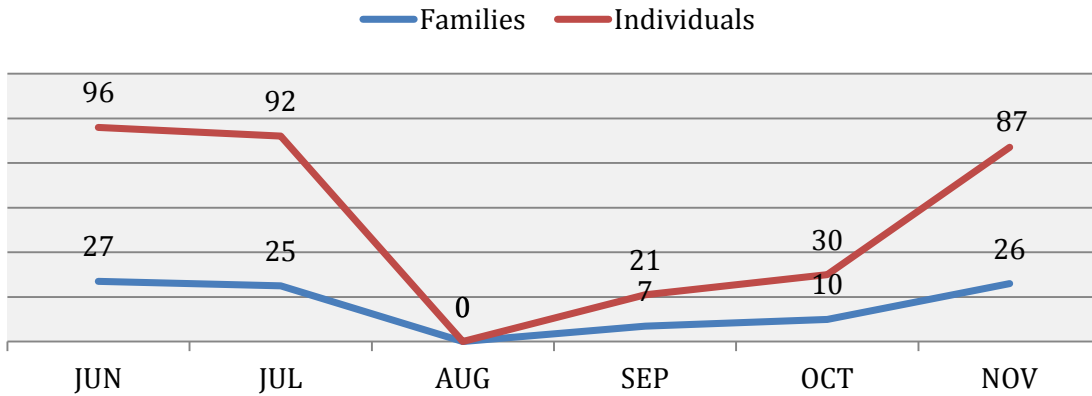
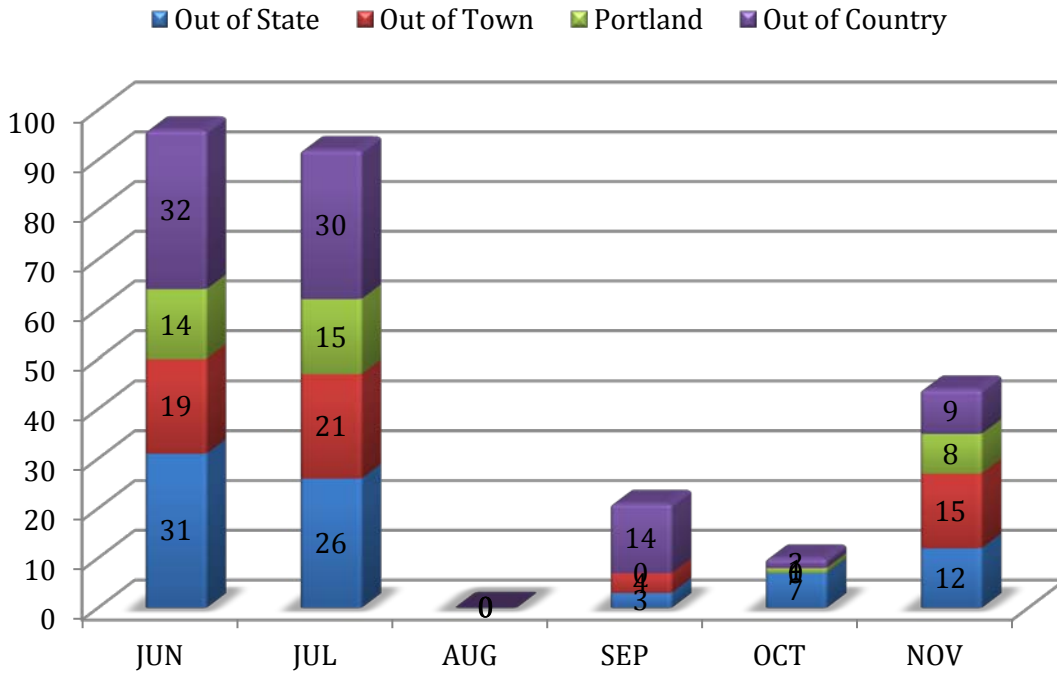
<b>CITY OF PORTLAND FAMILY SHELTER</b>	<b>FAMILIES</b>	<b>INDIVIDUALS</b>
<b>UNDUPLICATED FAMILIES/INDIVIDUALS:</b>	<b>51</b>	<b>172</b>
<b>TOTAL NEW INTAKES:</b>	<b>26</b>	<b>87</b>
<b>TOTAL HOUSING PLACEMENTS:</b>	<b>15</b>	<b>54</b>
• <b>TH PLACEMENTS</b>	<b>0</b>	<b>0</b>
• <b>PH PLACEMENTS</b>	<b>15</b>	<b>54</b>
<b>TOTAL RETURNS:</b>	<b>0</b>	<b>0</b>
<b>*EXPERIENCING HOMELESSNESS FOR THE 1<sup>ST</sup> TIME (*BASED ON SELF-REPORTING)</b>	<b>15</b>	<b>56</b>

<b>FAMILY CRISIS</b>	<b>FAMILIES</b>	<b>INDIVIDUALS</b>
<b>UNDUPLICATED FAMILIES/INDIVIDUALS:</b>	<b>14</b>	<b>20</b>
<b>TOTAL NEW INTAKES:</b>	<b>2</b>	<b>4</b>
<b>TOTAL HOUSING PLACEMENTS:</b>	<b>1</b>	<b>1</b>
• <b>TH PLACEMENTS</b>	<b>0</b>	<b>0</b>
• <b>PH PLACEMENTS</b>	<b>1</b>	<b>1</b>
<b>TOTAL RETURNS:</b>	<b>0</b>	<b>0</b>
<b>*EXPERIENCING HOMELESSNESS FOR THE 1<sup>ST</sup> TIME (*BASED ON SELF-REPORTING)</b>	<b>0</b>	<b>0</b>

CITY OF PORTLAND  
 HEALTH & HUMAN SERVICES DEPARTMENT  
 SOCIAL SERVICES DIVISION

**FAMILY SHELTER  
 INTAKE STATISTICS  
 NOVEMBER 2015**

**Total Number of Individuals**



Intake statistic or new arrival is defined as an individual that has not stayed at the Shelter for a period of three (3) months/90-days or longer.

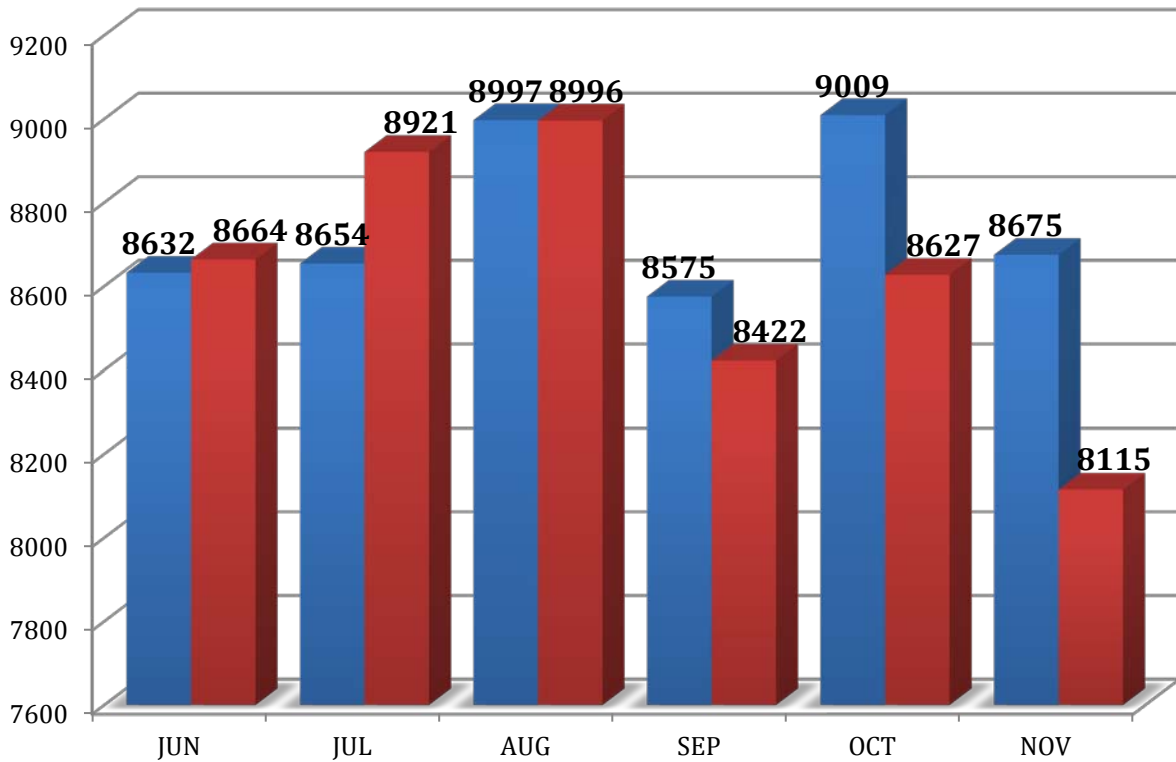
CITY OF PORTLAND  
HEALTH & HUMAN SERVICES DEPARTMENT  
SOCIAL SERVICES DIVISION

**FAMILY SHELTER  
NOVEMBER 2015**

<b>MAINE TOWN</b>		<b>OUT-OF-STATE</b>		<b>OUT-OF-COUNTRY</b>	
Bath	1	New York	1	Angola	1
Lewiston	2	Oregon	1	Burundi	1
Lisbon	1	Pennsylvania	1	Dem. Rep. of Congo	3
Waldoboro	1	Texas	1	Rwanda	1
				Somalia	1
				South Africa	2
				<b>Out-of-Country</b>	<b>9</b>
<b>Maine Towns</b>	<b>5</b>	<b>Out-of-State</b>	<b>4</b>	<b>Portland Intakes</b>	<b>8</b>
				<b>TOTAL INTAKES</b>	<b>26</b>

**PORTLAND, CITY-WIDE  
ADULT SHELTER STATISTICS  
NOVEMBER 2015**

■ 2014 ■ 2015



	<b>Jun</b>	<b>Jul</b>	<b>Aug</b>	<b>Sep</b>	<b>Oct</b>	<b>Nov</b>
<b>2014</b>	8632	8654	8997	8575	9009	8675
<b>2015</b>	8664	8921	8996	8422	8627	8115
<b>Percent</b>	+0.4%	+3%	-0.01%	-2%	-4%	-6.5%

**MILESTONE FOUNDATION**

**Substance Abuse Shelter                                  41 Beds**

**HEALTH & HUMAN SERVICES DEPARTMENT—SOCIAL SERVICES DIVISION**

**Oxford Street Shelter    154 Beds**

**FLORENCE HOUSE**

**Women’s Shelter    25 Beds**

**COMMUNITY OVERFLOW**

**Preble Street Resource Center                                  75 Beds**  
**GA Warming Center**

**PORTLAND, CITY-WIDE  
ADULT SHELTER STATISTICS  
NOVEMBER 2015**

	OSS		PS Overflow	Warming Ctr- Chair Only		PS Women's Shelter	Milestone	Beds Used Per Month
	Men	Women		Men	Women			
Capacity	154		75			25	41	
Month Total	2975	1341	1702	0	0	818	1279	8115
<b>Avg/Night</b>	99	45	57	0	0	27	43	271
Highest Night	105	52	75	0	0	28	46	300
Lowest Night	96	27	26	0	0	26	41	226

**MILESTONE**

<b>UNDUPLICATED INDIVIDUALS:</b>	<b>152</b>
<b>TOTAL NEW INTAKES:</b>	<b>5</b>
<b>*EXPERIENCING HOMELESSNESS FOR THE 1<sup>ST</sup> TIME</b> (*BASED ON SELF-REPORTING)	<b>0</b>

**OXFORD STREET SHELTER & COMMUNITY OVERFLOW (MEN)**

<b>UNDUPLICATED INDIVIDUALS:</b>	<b>391</b>
<b>TOTAL NEW INTAKES:</b>	<b>126</b>
<b>TOTAL HOUSING PLACEMENTS:</b>	<b>32</b>
• <b>TH PLACEMENTS</b>	<b>0</b>
• <b>PH PLACEMENTS</b>	<b>32</b>
<b>TOTAL RETURNS:</b>	<b>2</b>
<b>*EXPERIENCING HOMELESSNESS FOR THE 1<sup>ST</sup> TIME</b> (*BASED ON SELF-REPORTING)	<b>23</b>

**OXFORD STREET SHELTER & COMMUNITY OVERFLOW (WOMEN)**

<b>UNDUPLICATED INDIVIDUALS:</b>	<b>112</b>
<b>TOTAL NEW INTAKES:</b>	<b>30</b>
<b>TOTAL HOUSING PLACEMENTS:</b>	<b>5</b>
• <b>TH PLACEMENTS</b>	<b>0</b>
• <b>PH PLACEMENTS</b>	<b>5</b>
<b>TOTAL RETURNS:</b>	<b>0</b>
<b>*EXPERIENCING HOMELESSNESS FOR THE 1<sup>ST</sup> TIME</b> (*BASED ON SELF-REPORTING)	<b>10</b>

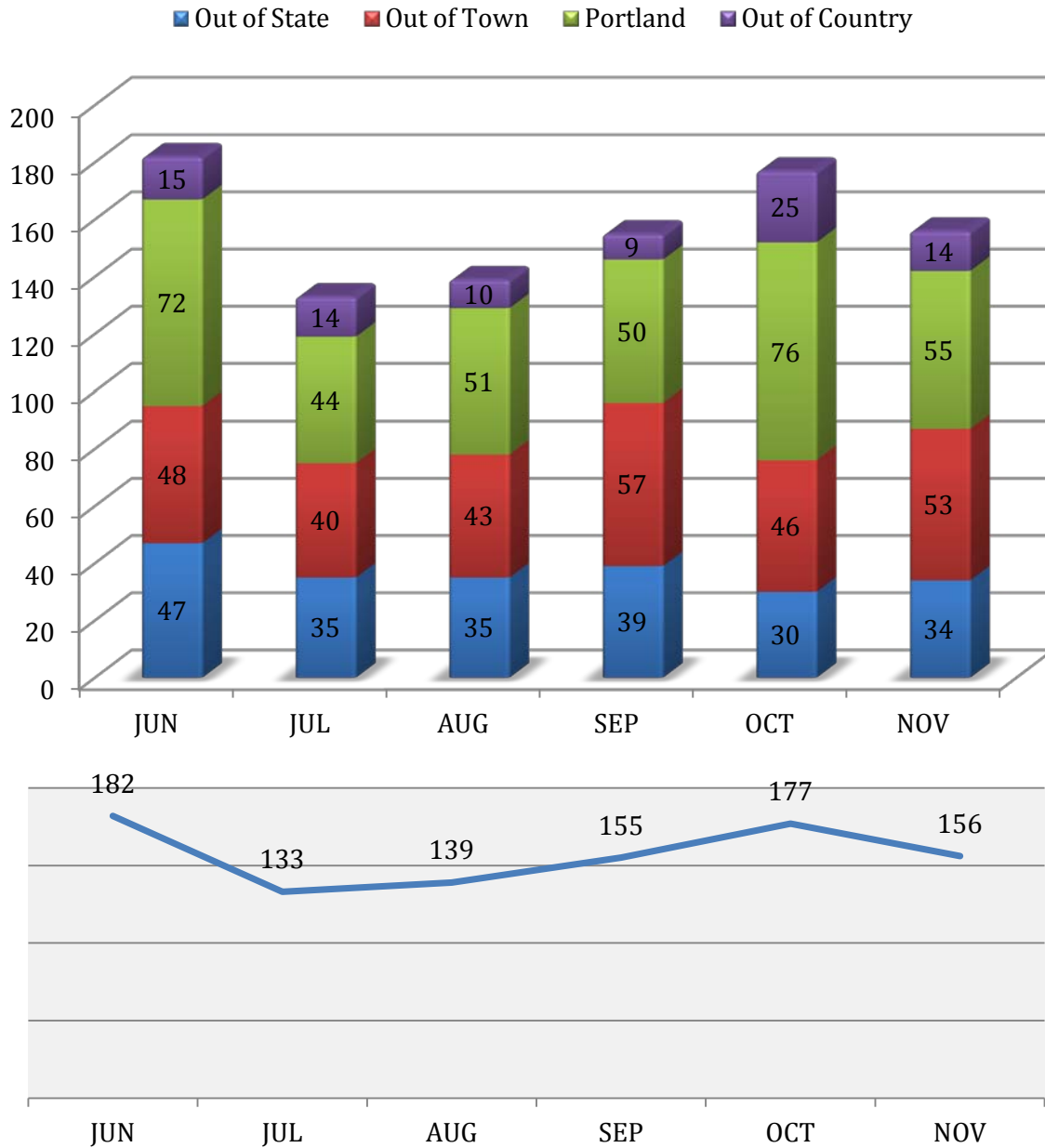
**FLORENCE HOUSE WOMEN'S SHELTER**

<b>UNDUPLICATED INDIVIDUALS:</b>	<b>44</b>
<b>TOTAL NEW INTAKES:</b>	<b>12</b>
<b>TOTAL HOUSING PLACEMENTS:</b>	<b>1</b>
• <b>TH PLACEMENTS</b>	<b>0</b>
• <b>PH PLACEMENTS</b>	<b>1</b>
<b>TOTAL RETURNS:</b>	<b>1</b>
<b>*EXPERIENCING HOMELESSNESS FOR THE 1<sup>ST</sup> TIME</b> (*BASED ON SELF-REPORTING)	<b>3</b>



CITY OF PORTLAND  
 HEALTH & HUMAN SERVICES DEPARTMENT  
 SOCIAL SERVICES DIVISION

**OXFORD STREET SHELTER**  
 INTAKE STATISTICS  
 NOVEMBER 2015



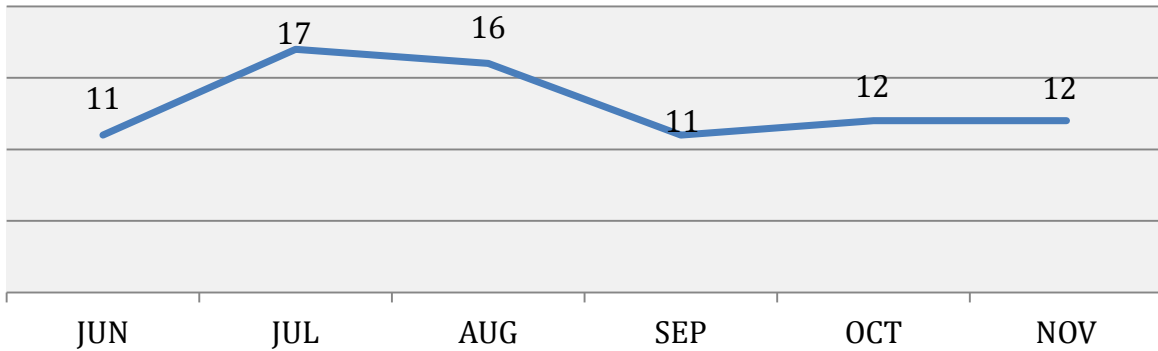
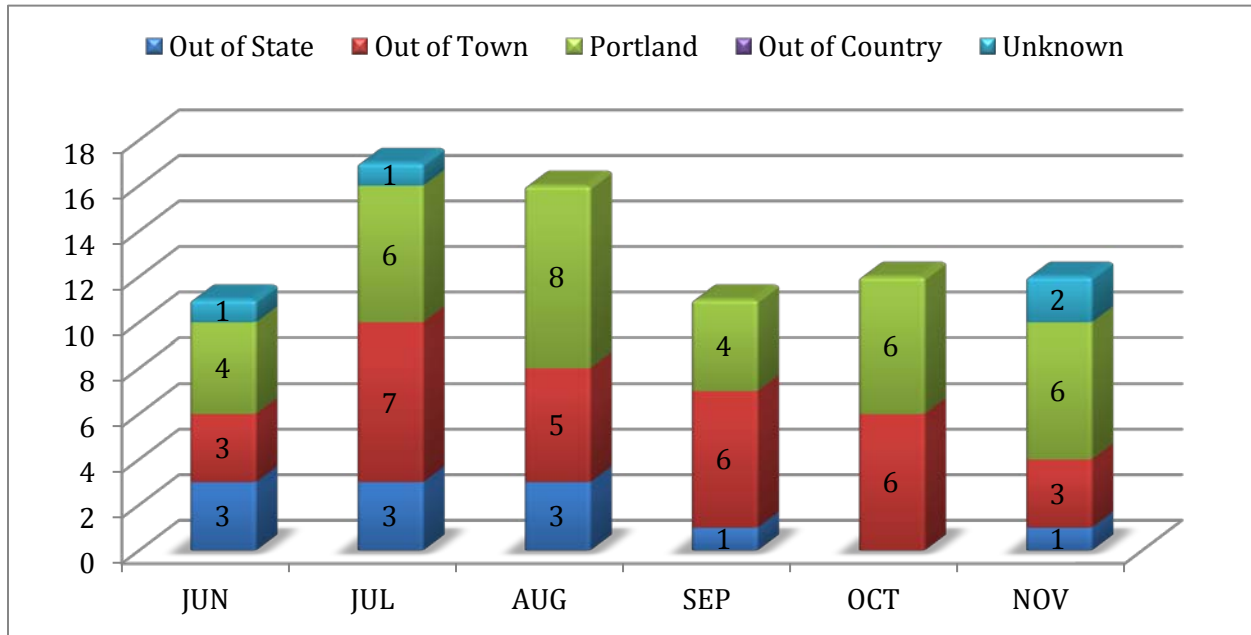
Intake statistic or new arrival is defined as an individual that has not stayed at the Shelter for a period of three (3) months/90-days or longer.

CITY OF PORTLAND  
HEALTH & HUMAN SERVICES DEPARTMENT  
SOCIAL SERVICES DIVISION

**OXFORD STREET SHELTER**  
**OCTOBER 2015**

<b>MAINE TOWN</b>		<b>OUT-OF-STATE</b>		<b>OUT-OF-COUNTRY</b>	
Alfred	1	Alaska	1	Angola	7
Augusta	1	Arizona	2	Burundi	1
Bangor	2	California	5	Dem. Rep. of Congo	5
Bar Harbor	1	Illinois	2	South Africa	1
Biddeford	5	Massachusetts	1		
Bradford	1	Michigan	1		
Brunswick	1	New Hampshire	4		
Camden	1	New Jersey	2		
Cape Elizabeth	2	New York	2		
Cornish	1	Ohio	1		
Ellsworth	1	Pennsylvania	2		
Harrison	1	Texas	2		
Lewiston	7	Vermont	1		
New Gloucester	1	Virginia	4		
New Sharon	1	Washington	3		
Nobleboro	2	Washington, D.C.	1		
Old Orchard Beach	2				
Oxford	1				
Presque Ile	1				
Rockland	1				
Saco	1				
Sanford	1				
Scarborough	1				
Sedgwick	1				
Sidney	1				
South Portland	3				
Standish	1				
Warren	1				
Waterville	1				
Westbrook	5				
Windham	2				
York	1				
				<b>Out-of-Country</b>	<b>14</b>
				<b>Portland Intakes</b>	<b>55</b>
<b>Maine Towns</b>	<b>53</b>	<b>Out-of-State</b>	<b>34</b>	<b>TOTAL INTAKES</b>	<b>156</b>

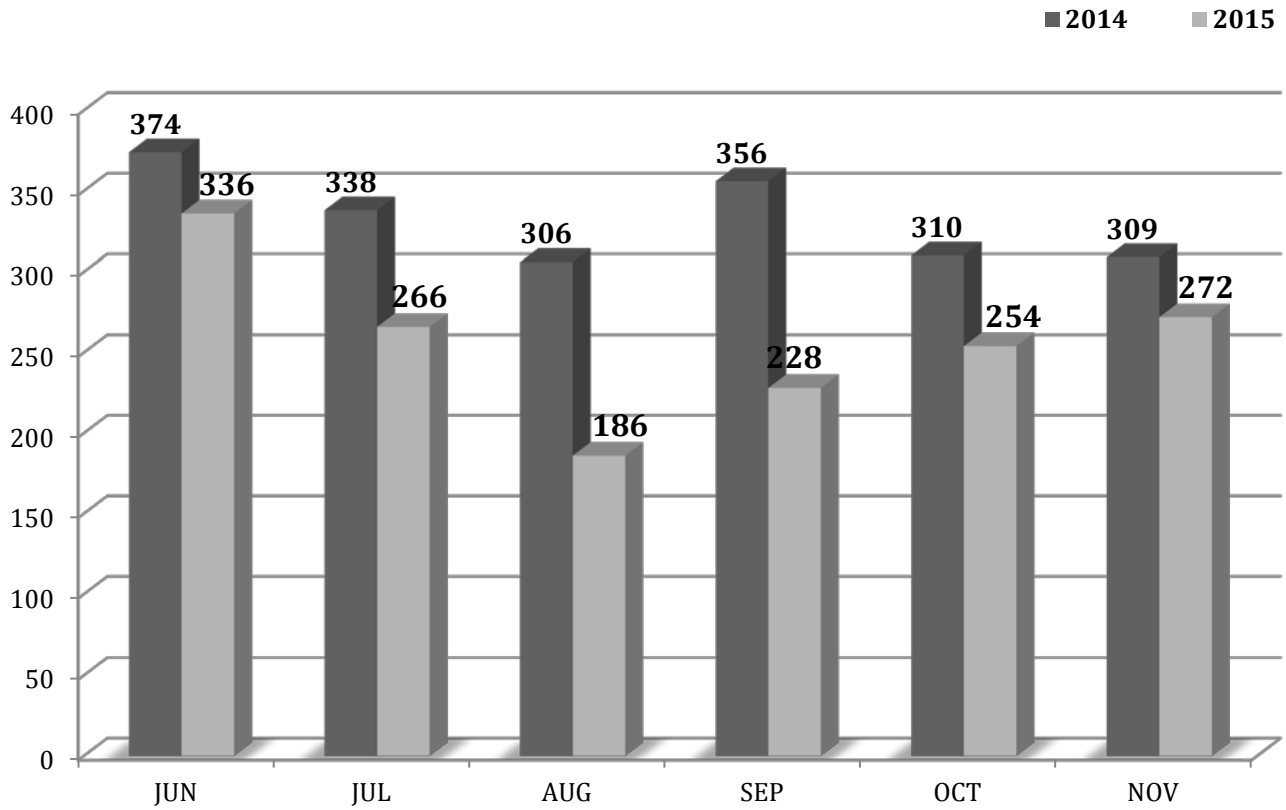
# FLORENCE HOUSE WOMEN'S SHELTER INTAKE STATISTICS NOVEMBER 2015



<b>MAINE TOWN</b>		<b>OUT-OF-STATE</b>		<b>OUT-OF-COUNTRY</b>	
Sanford	2	New Hampshire	1		
Westbrook	1				

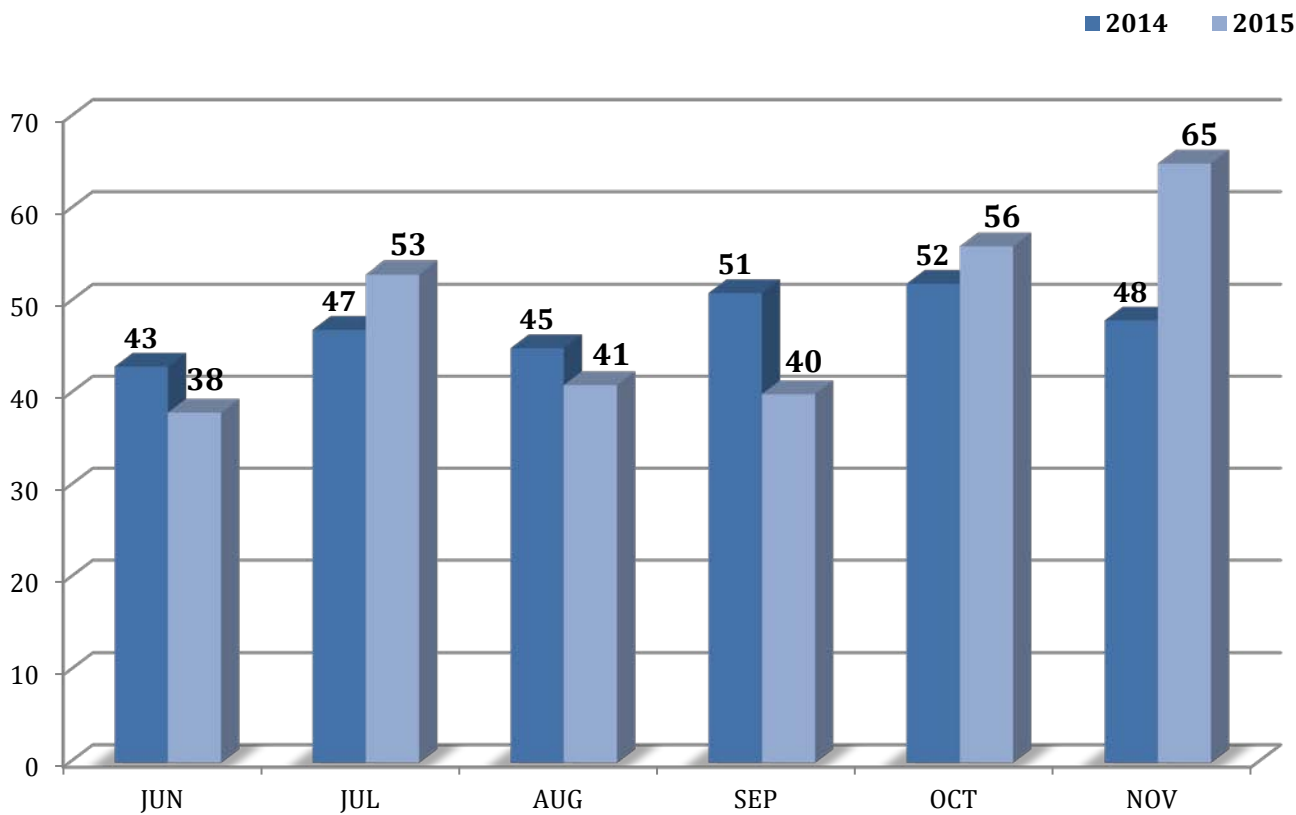
<b>Maine Towns</b>	<b>3</b>	<b>Out-of-State</b>	<b>1</b>	<b>Out-of-Country</b>	<b>0</b>
				<b>Unknown</b>	<b>2</b>
				<b>Portland Intakes</b>	<b>6</b>
				<b>TOTAL INTAKES</b>	<b>12</b>

# PORTLAND, CITY-WIDE SHELTER INTAKES BY MONTH NOVEMBER 2015



<b>NOVEMBER INTAKES (Individuals)</b>	
Family Crisis	4
Family Shelter	87
Joe Kreisler	8
Milestone	5
Oxford Street (Men)	126
Oxford Street (Women)	30
Women's Shelter	12
<b>TOTAL</b>	<b>272</b>

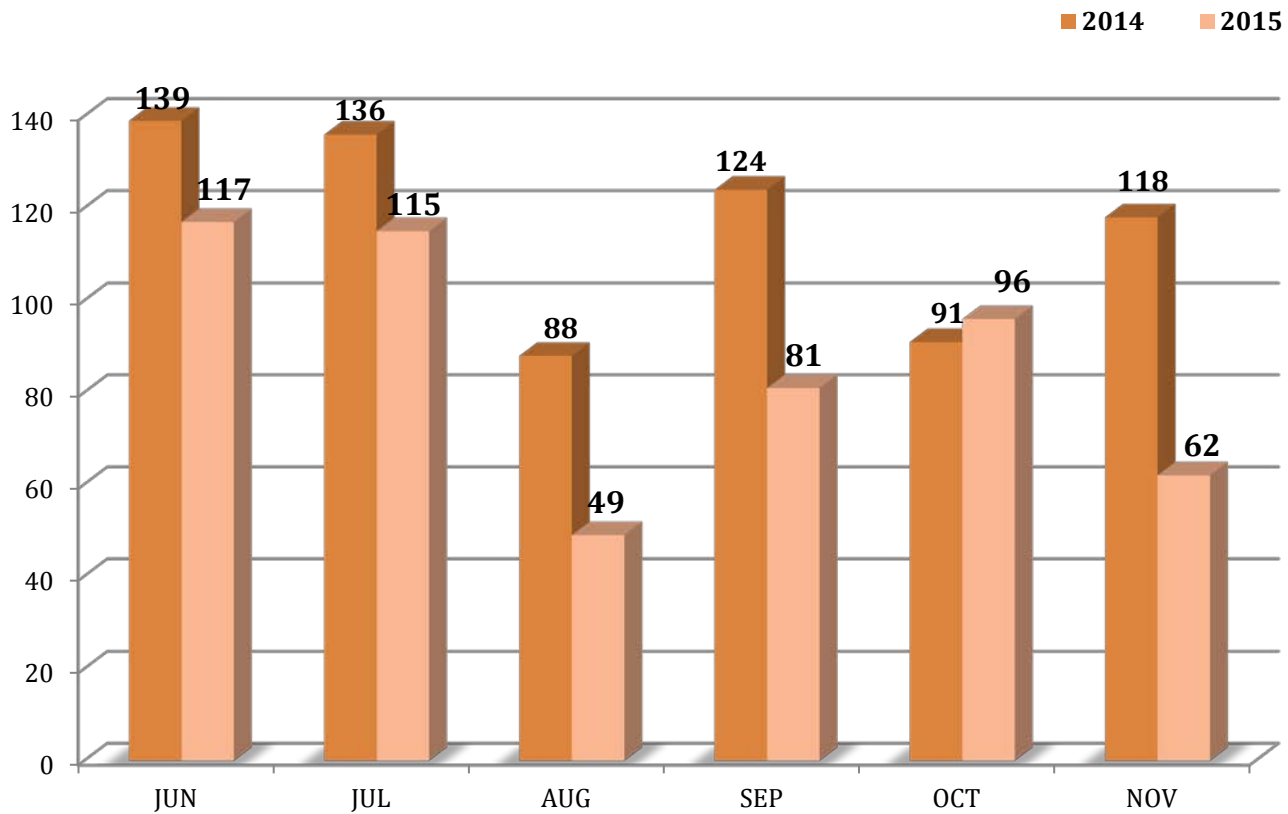
**PORTLAND, CITY-WIDE  
HOUSING PLACEMENTS BY MONTH  
NOVEMBER 2015**



	<b>TOTAL HOUSING PLACEMENTS (cases)</b>	<b>TRANSITIONAL</b>	<b>PERMANENT</b>
Family Crisis	1	0	1
Family Shelter	15	0	15
Joe Kreisler	11	1	10
Oxford Street (Men)	32	0	32
Oxford Street (Women)	5	0	5
Women's Shelter	1	0	1
<b>TOTAL</b>	<b>65</b>	<b>0</b>	<b>65</b>

\*Starting November, 2013, Oxford Street Shelter shifted prioritization of housing placements to their 30 longest-term stayers.

**PORTLAND, CITY-WIDE**  
**1<sup>ST</sup> TIME HOMELESSNESS STATISTICS**  
 (BASED ON SELF-REPORTING)  
**NOVEMBER 2015**



**NOVEMBER 2015**  
**1<sup>ST</sup> TIME HOMELESSNESS STATISTICS % OF ALL INTAKES**  
 (BASED ON SELF-REPORTING)

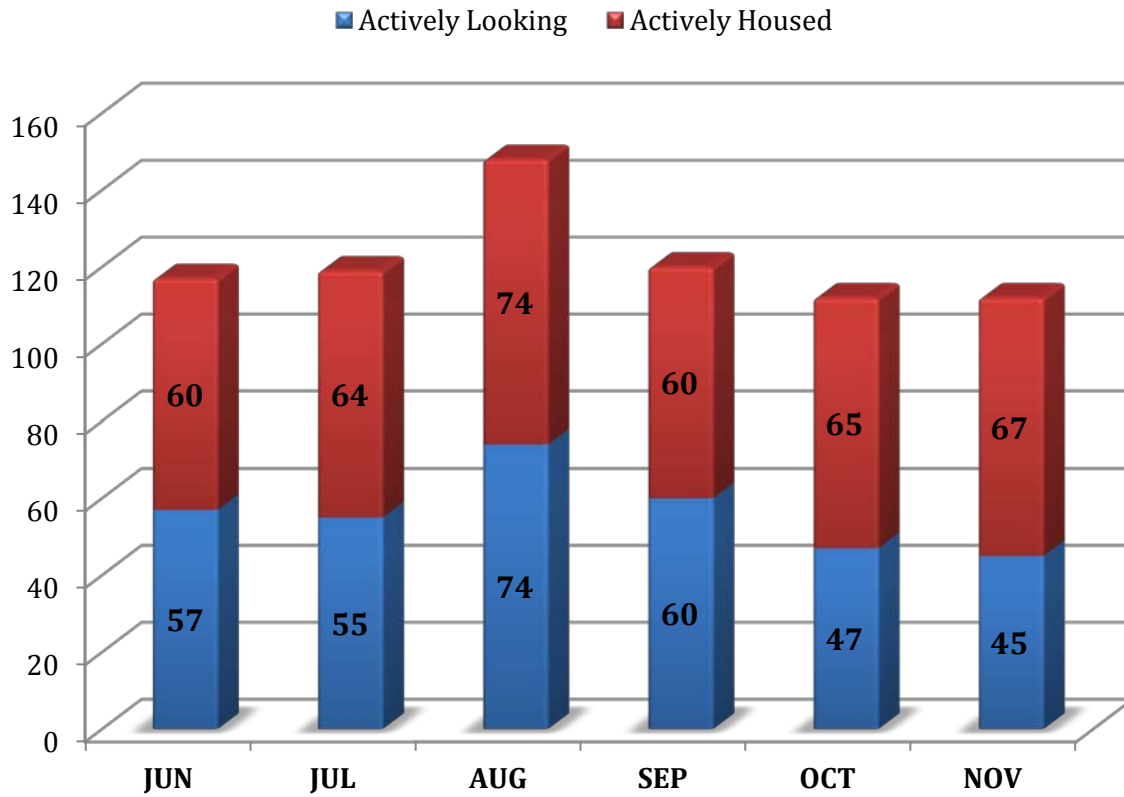
	<b>1<sup>st</sup> Time Homeless Intakes</b>	<b>% of Total First Time Homeless Intakes</b>
Family Crisis	0	<b>0%</b>
Family Shelter	26	<b>41%</b>
Joe Kreisler	0	<b>0%</b>
Milestone	0	<b>0%</b>
Oxford Street (Men)	23	<b>37%</b>
Oxford Street (Women)	10	<b>16%</b>
Women's Shelter	3	<b>4%</b>
<b>TOTAL</b>	<b>62</b>	

**PORTLAND, CITY-WIDE  
SHELTER COUNT BY NIGHT  
NOVEMBER 2015**

<b>Calendar Day</b>	<b>Family Crisis + Hotel</b>	<b>Family Shelter + Hotel</b>	<b>Florence House</b>	<b>Joe Kreisler</b>	<b>Milestone</b>	<b>OSS-Beds</b>	<b>OSS-Chairs</b>	<b>Total Bed Nights</b>
1	16	85	27	21	42	204	0	395
2	15	91	28	21	41	194	0	390
3	15	96	27	22	46	164	0	370
4	15	102	26	24	41	170	0	378
5	15	93	27	24	41	176	0	376
6	15	94	28	22	43	155	0	357
7	15	94	27	24	42	184	0	386
8	15	94	28	24	44	185	0	390
9	14	100	28	23	44	206	0	415
10	14	97	27	20	42	213	0	413
11	15	92	27	22	42	214	0	412
12	15	92	27	22	41	219	0	416
13	15	85	26	21	41	203	0	391
14	16	90	28	21	43	189	0	387
15	16	95	27	21	42	208	0	409
16	16	106	28	22	41	220	0	433
17	16	105	28	23	41	215	0	428
18	16	108	27	22	45	228	0	446
19	16	112	27	21	42	204	0	422
20	16	111	27	14	44	205	0	417
21	16	111	27	15	44	201	0	414
22	16	111	27	20	43	211	0	428
23	16	119	28	20	42	216	0	441
24	16	111	28	17	43	215	0	430
25	16	93	28	8	41	195	0	381
26	16	93	28	10	44	186	0	377
27	15	93	27	17	43	194	0	389
28	14	102	27	14	42	203	0	402
29	14	102	27	18	46	216	0	423
30	15	96	26	22	43	225	0	427
<b>Total</b>	460	2,973	818	595	1,279	6,018	0	12,143
<b>Avg/night</b>	15	99	27	20	43	201	0	405
<b>Highest</b>	16	119	28	24	46	228	0	446
<b>Lowest</b>	14	85	26	8	41	155	0	357

On November 18:  
  
**446 individuals**  
*(including families)*  
  
were utilizing shelter services in Portland

# PORTLAND, CITY-WIDE HOME TO STAY HOUSING PLACEMENTS NOVEMBER 2015



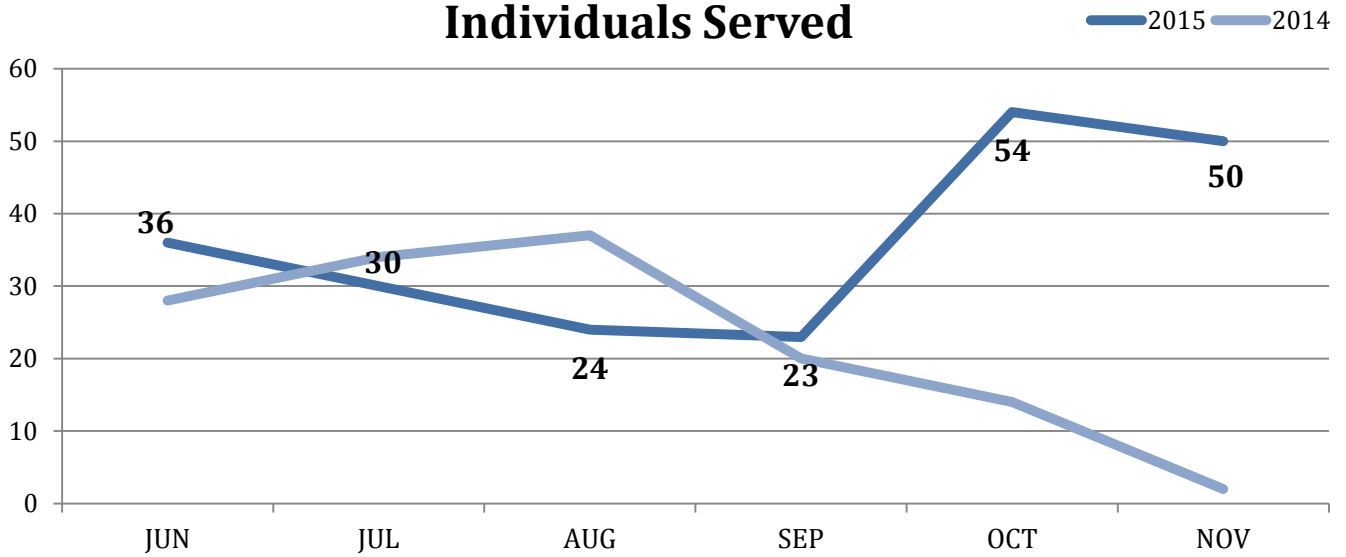
	ACTIVELY LOOKING (CASES)	ACTIVELY HOUSED (CASES)
Family Crisis	3	9
Family Shelter	2	20
Joe Kreisler	25	4
Oxford Street	8	26
Women's Shelter	7	8
<b>TOTAL</b>	<b>45</b>	<b>67</b>



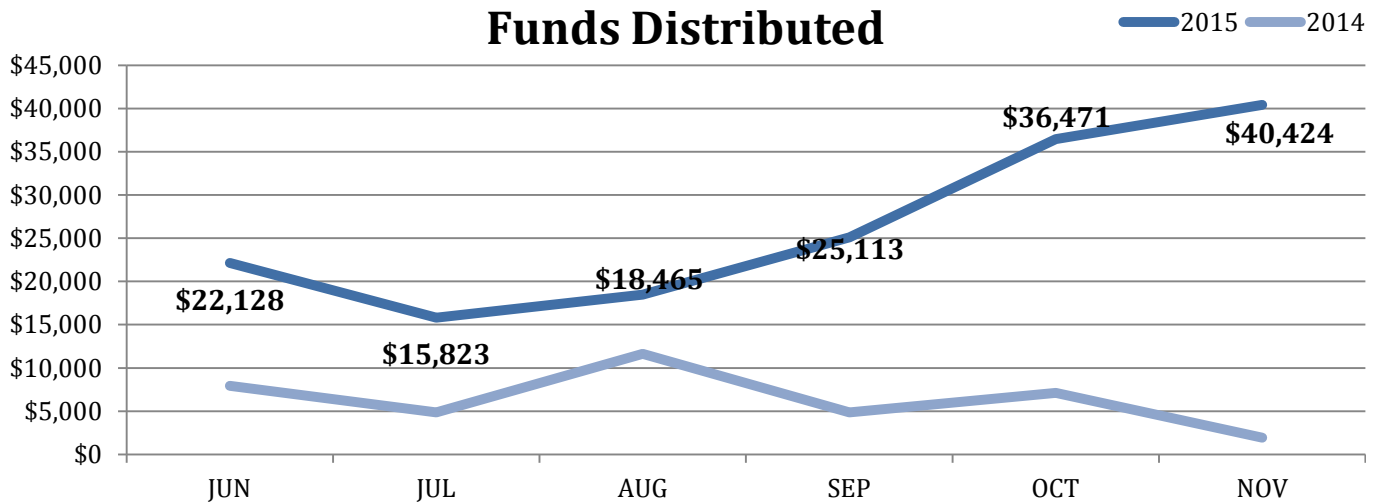
HEALTH & HUMAN SERVICES DEPARTMENT  
SOCIAL SERVICES DIVISION

**TENANT-BASED RENTAL ASSISTANCE  
(TBRA)  
NOVEMBER 2015**

**Individuals Served**



**Funds Distributed**



**Please send all referrals to:**

Aaron Geyer, Program Coordinator  
aeg@portlandmaine.gov  
(207) 482-5131

Amber Bowman, Human Services Counselor  
ajb@portlandmaine.gov  
(207) 482-5208