

Rev	Date	Revision

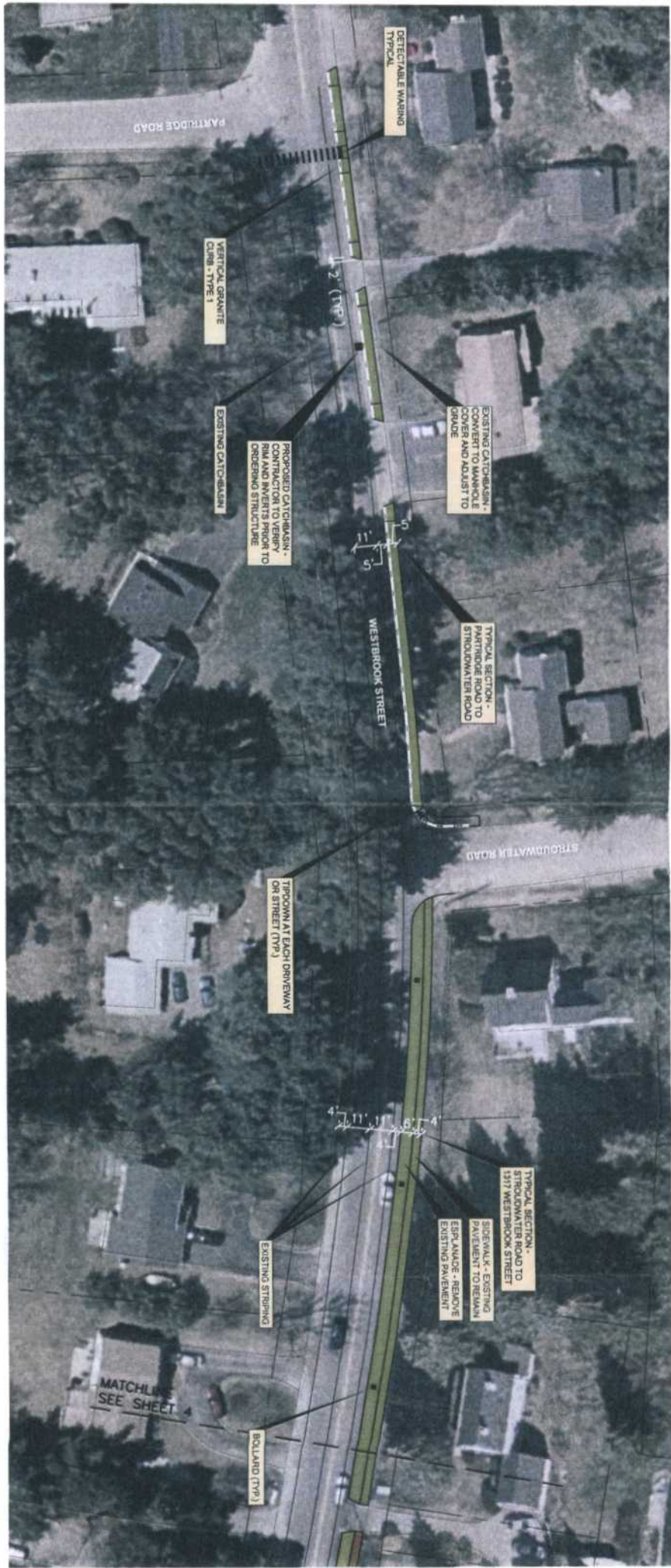
Issued For	Date	By

This plan shall not be modified without written permission from Gorrill-Palmer Consulting Engineers, Inc. (GPCE). Any alteration of the user's model risks and without liability to GPCE.

GP Gorrill-Palmer Consulting Engineers, Inc.
 Transportation and Civil Engineering Services FAX: 201-637-8912
 P.O. Box 1217 Portland, ME 04109
 E-mail: info@gorrillpalmer.com

Drawing Name: **4' Sidewalk with Bollards - Photo Rendering**
 Project: **Westbrook Street**
 Client: **City of Portland Public Works**
 55 Portland Street, Portland, Maine 04101

Drawing No: **1**



GP
 Gorrell-Palmer Consulting Engineers, Inc.
 100 Main Street
 Portland, ME 04101
 Corp. ME 04038
 303-453-4810
 FAX: 207-657-8812
 E-Mail: info@gorrellpalmer.com

SHEET 3 OF 5	CITY OF PORTLAND, MAINE DEPARTMENT OF PUBLIC WORKS ENGINEERING SECTION	WESTBROOK STREET SIDEWALK	PROJECT NO.: -	DESIGNED BY: P. HERBICH	REFERENCES: "CADD" PROJECT FILE: "CADD" DRAWING NAME: ALIGNMENT NAME: SEWER BOOKS: LEVEL BOOKS: GENERAL PLANS: CITY OF PORTLAND WATER PLANS	PLOT STYLE:
	DATE APPROVED _____ CITY ENGINEER _____	SIDEWALK PLAN	DATE: -	DRAWN BY: ERIC - PROJ. J. COLANGELO		