

City of Portland  
Health & Human Services Department  
Social Services Division

PORTLAND HOMELESS SHELTERS

Total Number of Individuals Residing in Shelters per Night:

	December 2008	December 2009
ADOLESCENTS	9 Individuals	14 Individuals
ADULTS	196 Individuals	212 Individuals
FAMILIES	93 Individuals Average 30 Families	84 Individuals Average 27 Families
Total	298 Individuals	310 Individuals

31 Days in the Month of December

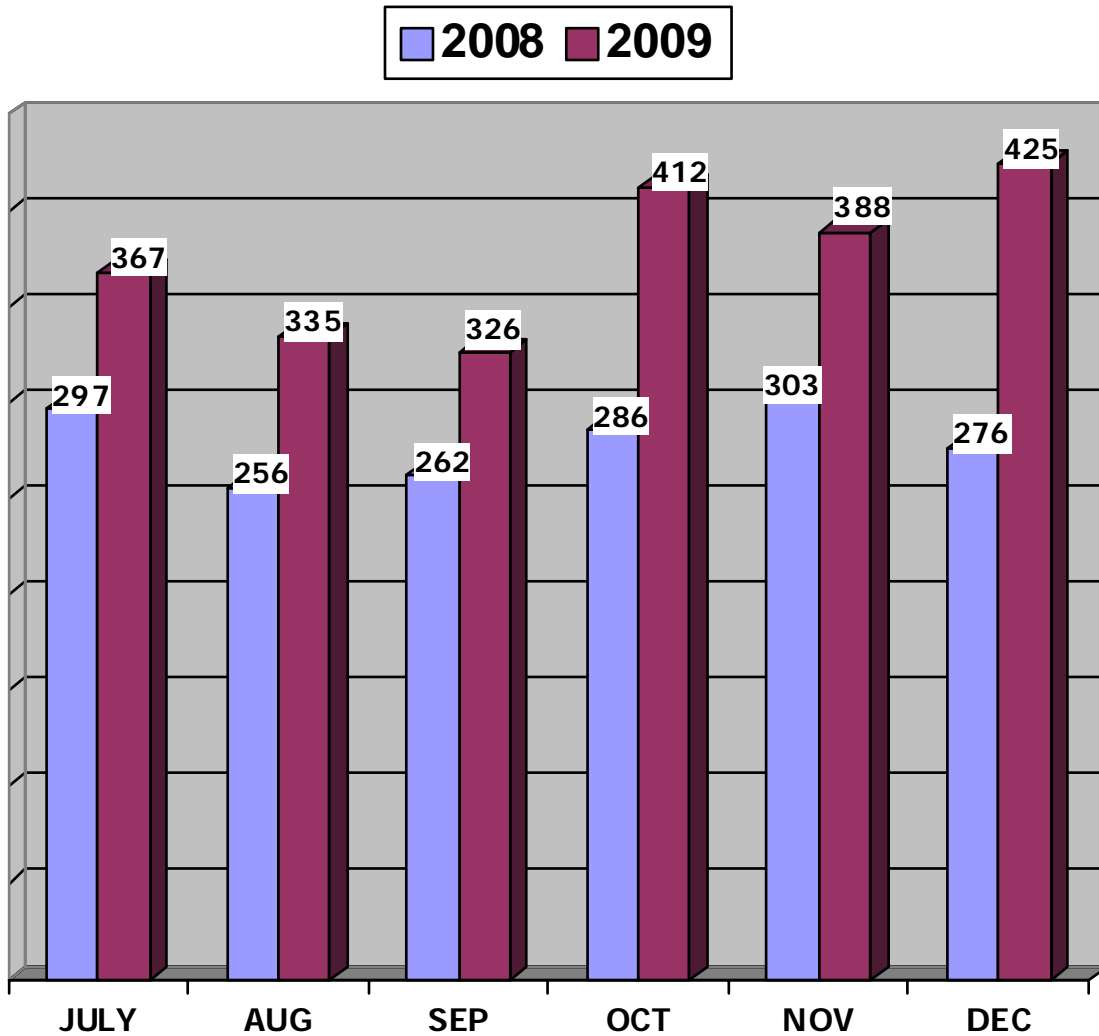
This information is also posted on the City of Portland's website each month.

To view this information, please go to

<http://www.portlandmaine.gov/hhs/ssesac.asp>

Prepared by:  
City of Portland  
Health & Human Services Department  
Social Services Division

DECEMBER 2009  
 ADOLESCENT BEDS USED  
 PREBLE STREET LIGHT HOUSE SHELTER



	July	Aug.	Sept.	Oct.	Nov.	Dec.
2008	297	256	262	286	303	276
2009	367	335	326	412	388	425
Percent	19%	24%	24%	44%	28%	54%

PREBLE STREET  
 Lighthouse Shelter                      16 Beds

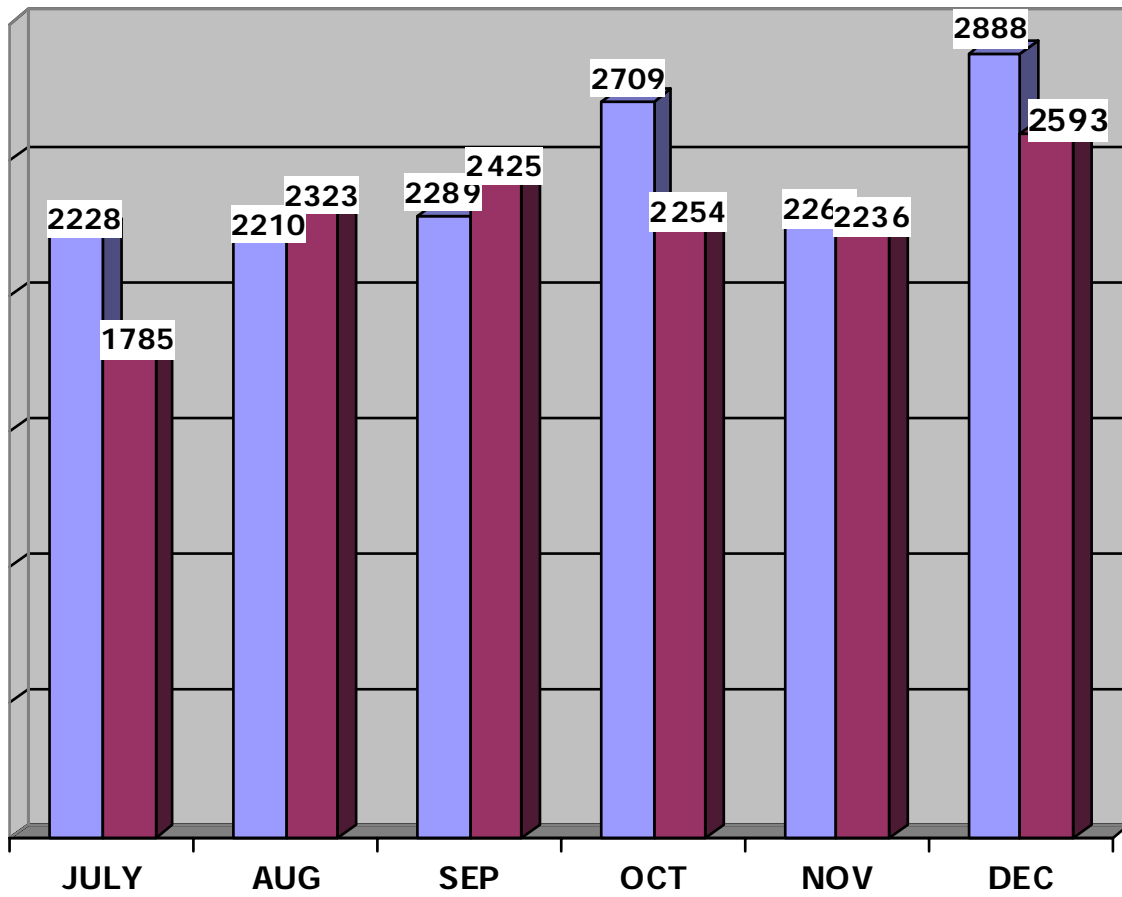
**\* EXPERIENCING HOMELESSNESS FOR THE 1<sup>ST</sup> TIME      6**  
 (\*BASED ON SELF-REPORTING)

DECEMBER 2009  
 ADOLESCENT SHELTER STATISTICS  
 PREBLE STREET LIGHT HOUSE SHELTER

Day of Month	Preble Street	Beds Available
	16	16
1	16	0
2	14	2
3	16	0
4	14	2
5	14	2
6	15	1
7	15	1
8	15	1
9	16	0
10	15	1
11	15	1
12	14	2
13	16	0
14	16	0
15	16	0
16	16	0
17	15	1
18	15	1
19	14	2
20	16	0
21	14	2
22	13	3
23	13	3
24	6	10
25	8	8
26	8	8
27	12	4
28	14	2
29	16	0
30	13	3
31	5	11
Totals	425	71
Ave/Night	14	2

DECEMBER 2009  
FAMILY BEDS USED

2008 2009



	July	August	Sept.	Oct.	Nov.	Dec.
2008	2228	2210	2289	2709	2265	2888
2009	1785	2323	2425	2254	2236	2593
Percent	-20%	5%	6%	-17%	-1%	-10%

HEALTH & HUMAN SERVICES DEPARTMENT  
SOCIAL SERVICES DIVISION

Family Shelter 77 Beds

FAMILY CRISIS SHELTER 14 Beds

MAPS SHELTER SERVICES 10 Beds

EMERGENCY SHELTER 4 Beds  
General Assistance

DECEMBER 2009  
FAMILY SHELTER STATISTICS

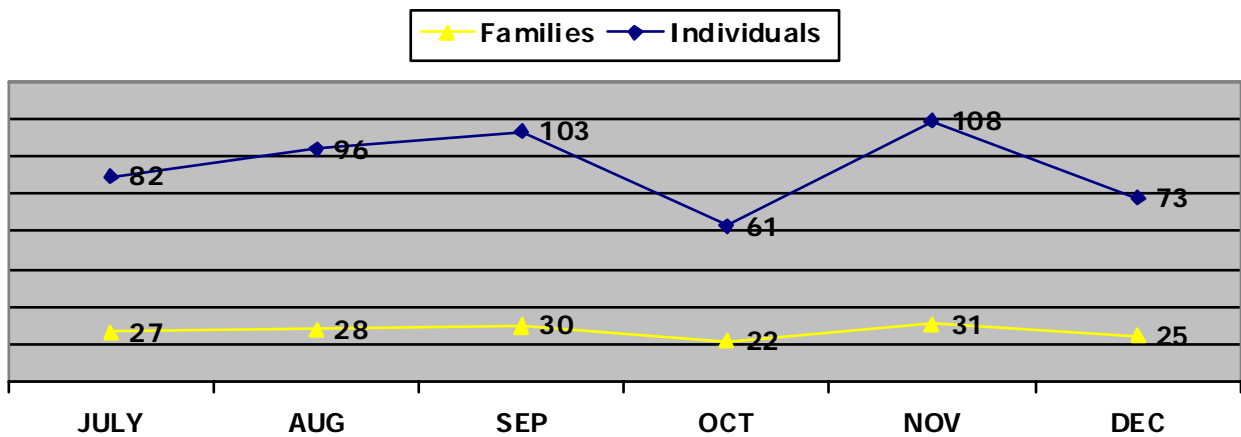
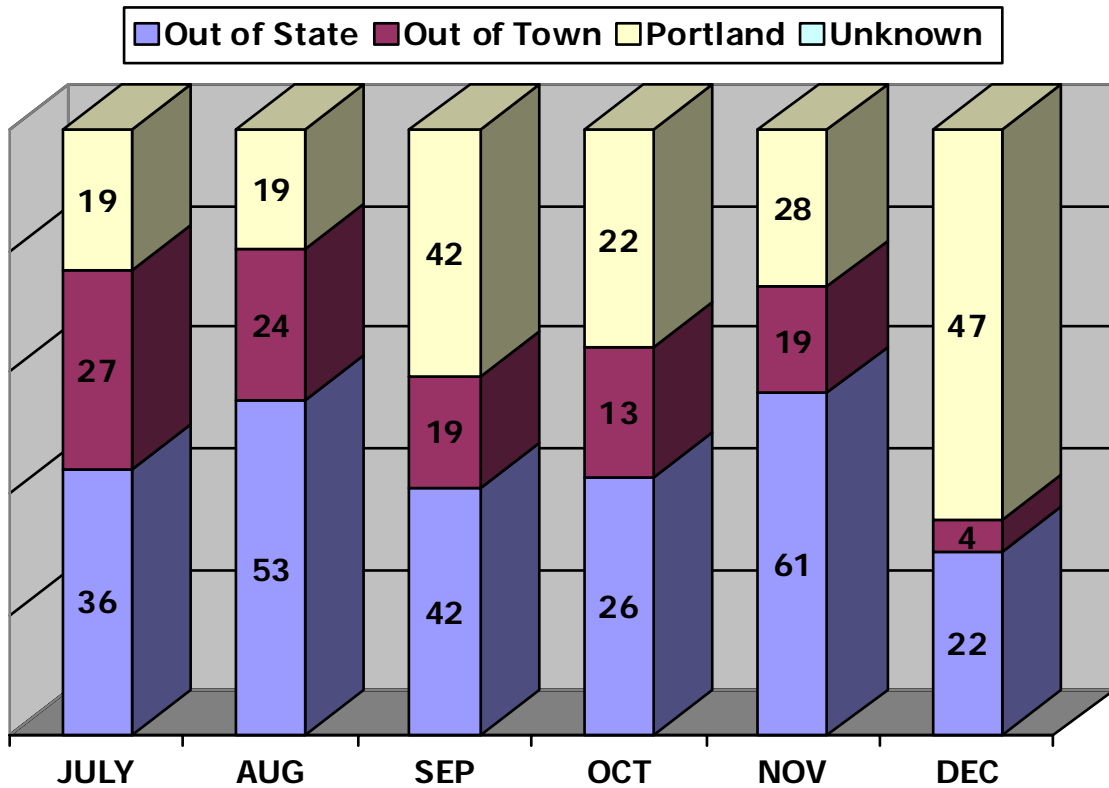
Day of Month	City* (# Families)	City Used	Family Crisis	Step Up / MAPS	GA Hotels	Beds Used Per Night	Beds Available
	17	77	14	10			101
1	17	63	9	8	0	80	21
2	17	63	11	8	0	82	19
3	18	66	11	8	0	85	16
4	19	68	11	8	0	87	14
5	20	70	11	8	0	89	12
6	20	70	12	8	0	90	11
7	20	70	13	8	0	91	10
8	21	73	12	8	0	93	8
9	21	73	12	8	0	93	8
10	19	69	12	11	0	92	9
11	17	60	12	11	0	83	18
12	17	60	12	11	0	83	18
13	17	60	12	11	0	83	18
14	19	69	12	11	0	92	9
15	18	66	12	11	0	89	12
16	18	64	12	12	0	88	13
17	17	62	12	12	0	86	15
18	16	62	12	12	0	86	15
19	16	61	12	12	0	85	16
20	16	61	12	12	0	85	16
21	17	63	12	12	0	87	14
22	15	54	12	12	0	78	23
23	15	54	12	12	0	78	23
24	14	49	12	13	0	74	27
25	14	49	12	13	0	74	27
26	15	53	12	13	0	78	23
27	14	50	12	14	0	76	25
28	15	52	12	14	0	78	23
29	15	49	13	14	0	76	25
30	15	49	13	14	0	76	25
31	15	49	13	14	0	76	25
Totals	527	1881	369	343	0	2593	538
Ave/Night	17	61	12	11	0	84	17

CITY OF PORTLAND  
 Health & Human Services Department  
 Social Services Division

Family Shelter

DECEMBER 2009  
 Intake Statistics

Total Number of Individuals



Intake statistic or new arrival is defined as an individual that has not stayed at the Shelter for a period of three (3) months/90-days or longer.

CITY OF PORTLAND  
 Health & Human Services Department  
 Social Services Division  
**Family Shelter**  
 INDIVIDUALS

DECEMBER 2009

MAINE TOWNS

	Families / Individuals
Unknown	1 / 2
West Baldwin	1 / 2

OUT-OF-STATE

	Families / Individuals
Djibouti	1 / 2
Georgia	1 / 3
New York	2 / 7
Rwanda	1 / 2
Tennessee	1 / 5
Utah	1 / 3

Maine Towns **2** Families for a total of **4** individuals

Out-of-State **7** Families for a total of **22** individuals

Portland **16** families for a total of **47** individuals

***TOTAL INTAKES: 25 families for a total of 73 individuals***

**TOTAL NUMBER OF CLIENTS SERVED (Unduplicated Clients) 27 Families /90 Individuals**

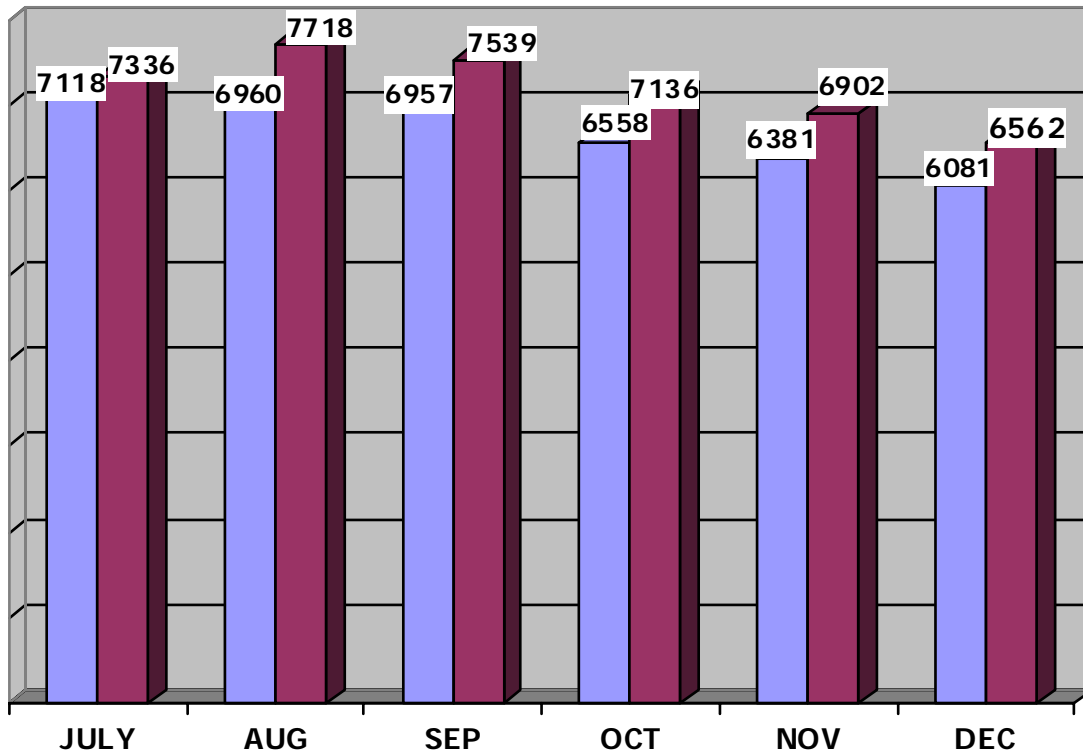
**TOTAL NUMBER OF CLIENTS PLACED IN HOUSING 20 Families / 65 Individuals**  
**TOTAL NUMBER OF CLIENTS THAT RETURNED 0**

**\*EXPERIENCING HOMELESSNESS FOR THE 1<sup>ST</sup> TIME 11 Families / 36 Individuals**  
 (\*BASED ON SELF-REPORTING)

\*Refugees experiencing homelessness for the 1<sup>st</sup> time 4 Families / 18 Individuals

DECEMBER 2009  
ADULT SHELTER  
STATISTICS

2008 2009



	July	August	Sept.	Oct.	Nov.	Dec.
2008	7118	6960	6957	6558	6381	6081
2009	7336	7718	7539	7136	6902	6562
Percent	3%	11%	8%	9%	8%	8%

MILESTONE FOUNDATION  
Substance Abuse Shelter 41 Beds

HEALTH & HUMAN SERVICES DEPARTMENT  
SOCIAL SERVICES DIVISION  
Oxford Street Shelter for Men 129 Beds

PREBLE STREET  
Women's Shelter 45 Beds

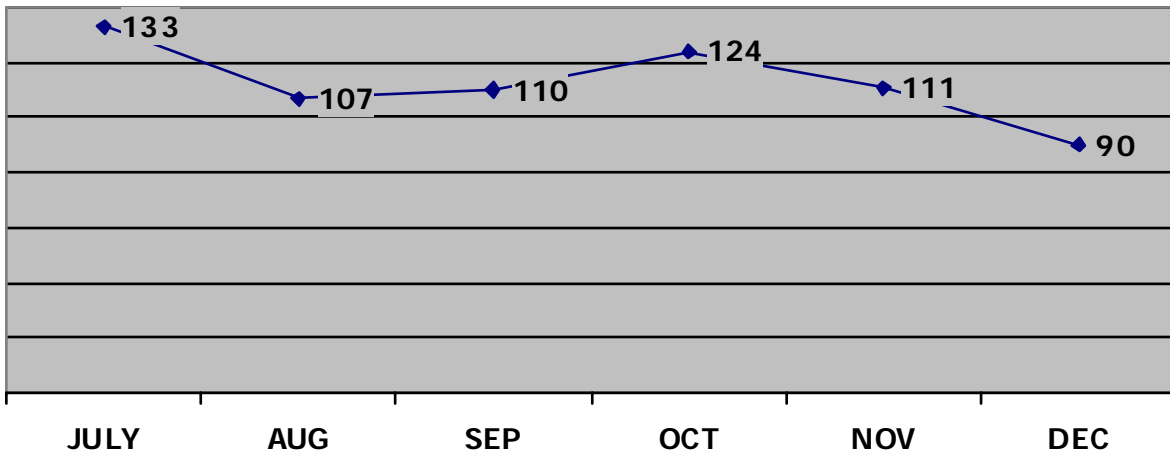
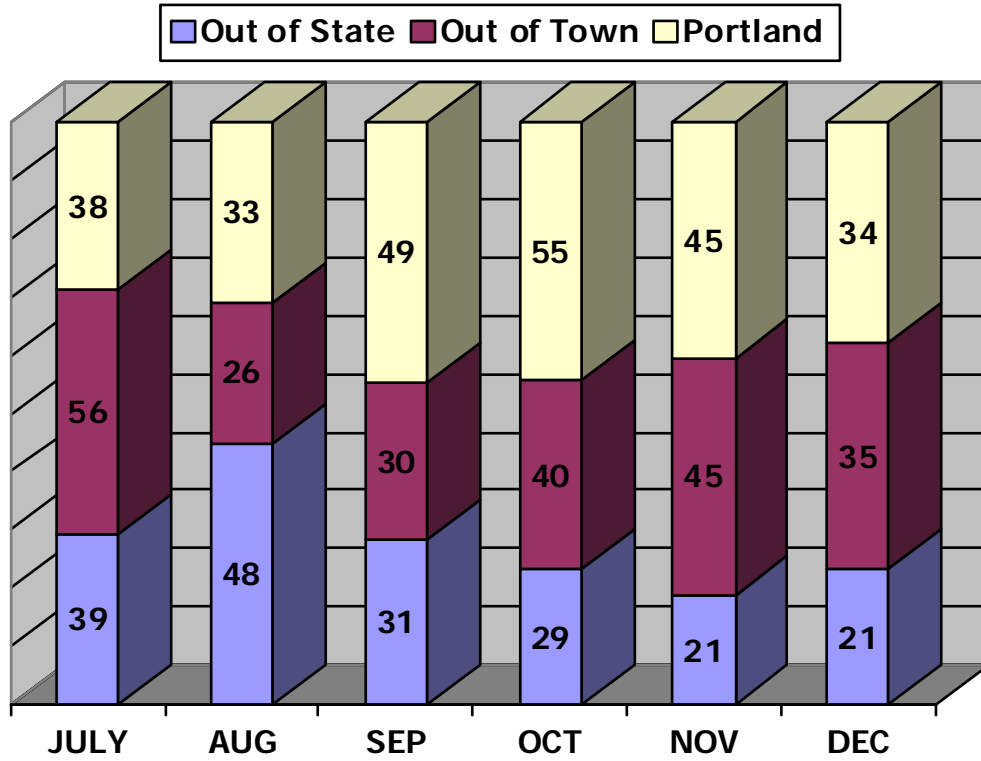
DECEMBER 2009  
ADULT SHELTER STATISTICS

Day of Month	Milestone	Oxford St	PS Women's Shelter	Beds Used per Night
	41	129	45	
1	47	132	57	236
2	45	134	52	231
3	44	118	53	215
4	38	113	47	198
5	33	114	44	191
6	39	128	49	216
7	43	139	54	236
8	39	141	50	230
9	36	137	47	220
10	37	140	52	229
11	37	122	38	197
12	37	129	41	207
13	42	130	45	217
14	39	132	48	219
15	40	136	57	233
16	38	138	49	225
17	43	130	47	220
18	37	120	45	202
19	41	122	46	209
20	30	122	49	201
21	35	130	46	211
22	38	131	49	218
23	34	126	45	205
24	33	106	41	180
25	30	116	35	181
26	39	110	43	192
27	33	121	44	198
28	34	134	54	222
29	37	130	50	217
30	45	130	47	222
31	34	117	33	184
TOTAL	1177	3928	1457	6562
Ave/Night	38	127	47	212

CITY OF PORTLAND  
 Health & Human Services Department  
 Social Services Division

Oxford Street Shelter

DECEMBER 2009  
 Intake Statistics



Intake statistic or new arrival is defined as an individual that has not stayed at the Shelter for a period of three (3) months/90-days or longer.

CITY OF PORTLAND  
 Health & Human Services Department  
 Social Services Division  
**Oxford Street Shelter for Men**

DECEMBER 2009

MAINE TOWN		OUT-OF-STATE			
Arundel	2	Arizona	1		
Auburn	1	Burundi	1		
Biddeford	1	California	1		
Brunswick	2	Connecticut	1		
Damrascotta	1	Illinois	1		
Denmark	1	Louisiana	1		
Durham	1	Massachusetts	1		
East Baldwin	1	Minnesota	2		
Fryeburg	1	New Hampshire	2		
Gray	1	New York	1		
Kennebunk	1	North Carolina	2		
Lewiston	4	Ohio	1		
Lisbon Falls	1	Oregon	1		
Naples	1	Texas	1		
Old Orchard Beach	1	Virginia	1		
Saco	1	Washington	1		
Sanford	1				
South Paris	1				
South Portland	5				
Standish	1				
Topsham	1				
Warren	1				
Waterville	1				
Westbrook	1				
Windham	1				
Yarmouth	1				
Maine Towns	35	Out-of-State	21	Portland	34
				TOTAL INTAKES	90

**TOTAL NUMBER OF MEN SERVED (Unduplicated Clients) 327**

**TOTAL NUMBER OF CLIENTS PLACED IN HOUSING 29**

**TOTAL NUMBER OF CLIENTS THAT RETURNED 3**

**TOTAL NUMBER OF CLIENTS PLACED AT THE YMCA 2**

**\*INTAKES EXPERIENCING HOMELESSNESS FOR THE 1<sup>ST</sup> TIME 48**

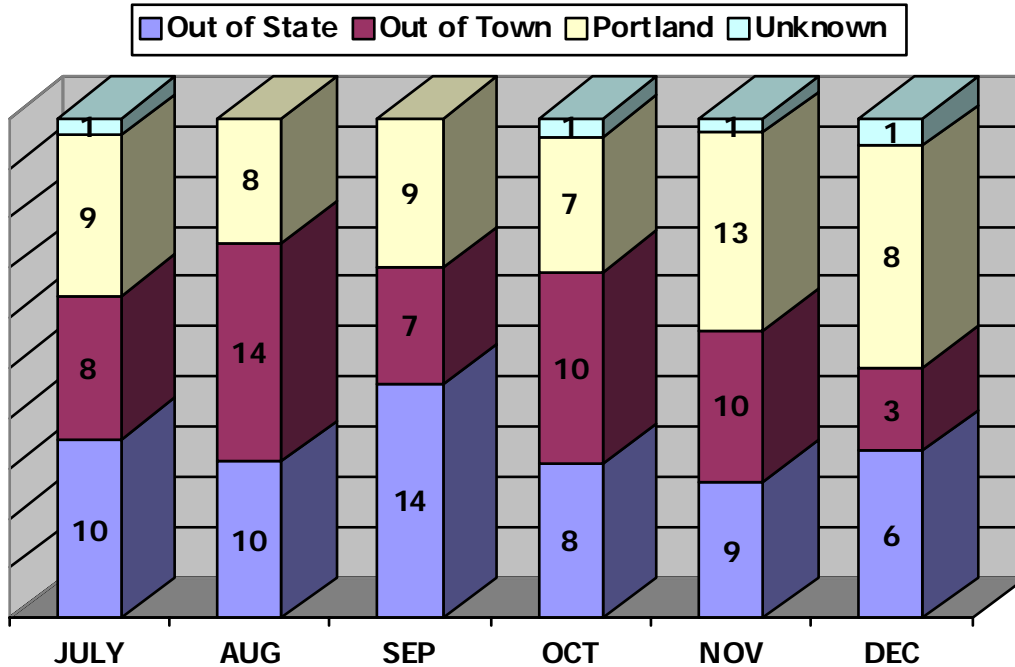
(\*BASED ON SELF-REPORTING)

# PREBLE STREET

## Preble Street Women's Shelter

DECEMBER 2009

Intake Statistics



### MAINE TOWNS

Biddeford 1  
 Castine 1  
 Lewiston 1

### OUT-OF-STATE

California 1  
 Congo 1  
 Florida 1  
 New York 1  
 North Dakota 1  
 Trinidad 1

Maine Towns 3

Out-of-State 6

Portland 8  
 Unknown 1

TOTAL INTAKES: 18

**TOTAL NUMBER OF WOMEN SERVED (Unduplicated Clients) 101**

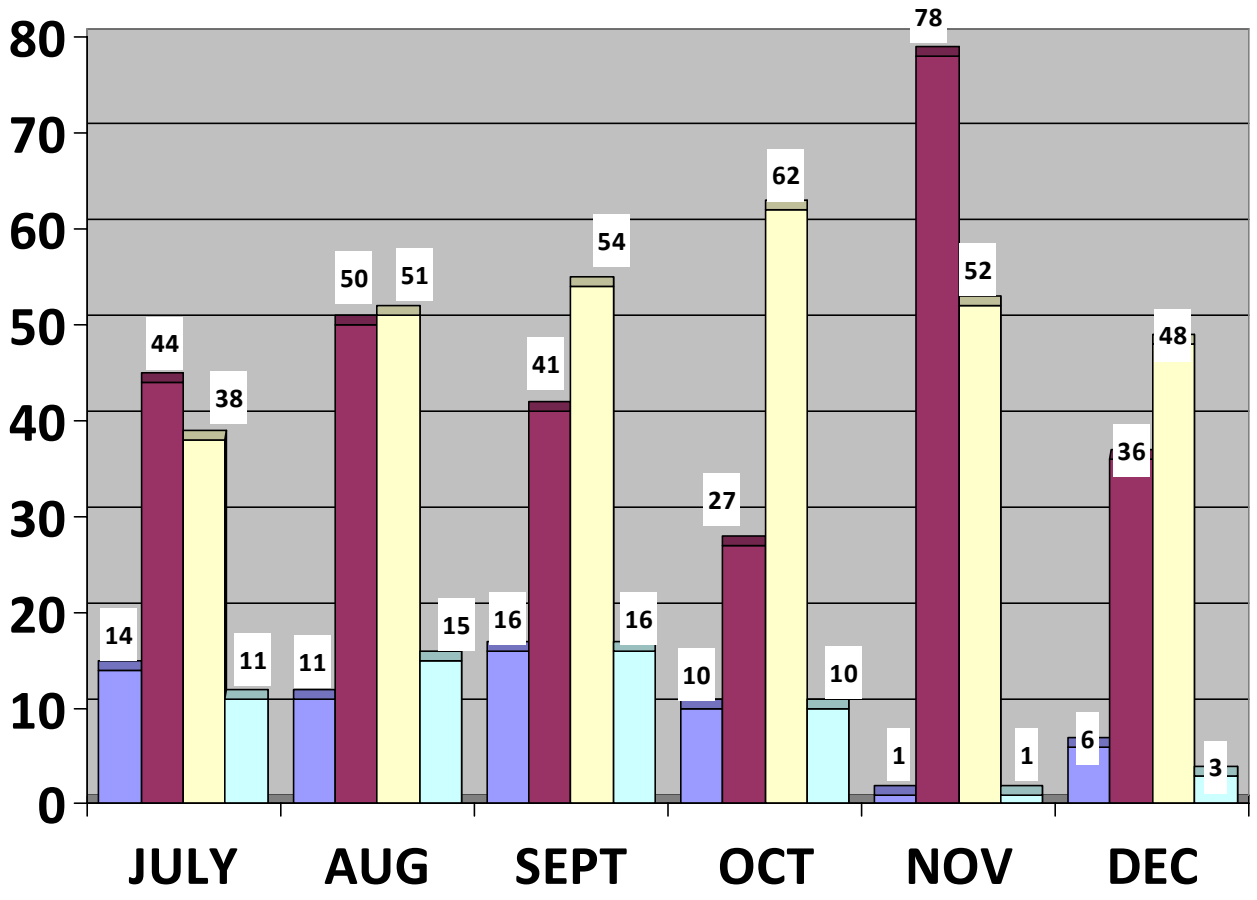
**TOTAL NUMBER OF WOMEN PLACED IN HOUSING 6**

**TOTAL NUMBER OF WOMEN THAT RETURNED 2**

**\*INTAKES EXPERIENCING HOMELESSNESS FOR THE 1<sup>ST</sup> TIME 3**  
 (\*BASED ON SELF-REPORTING)

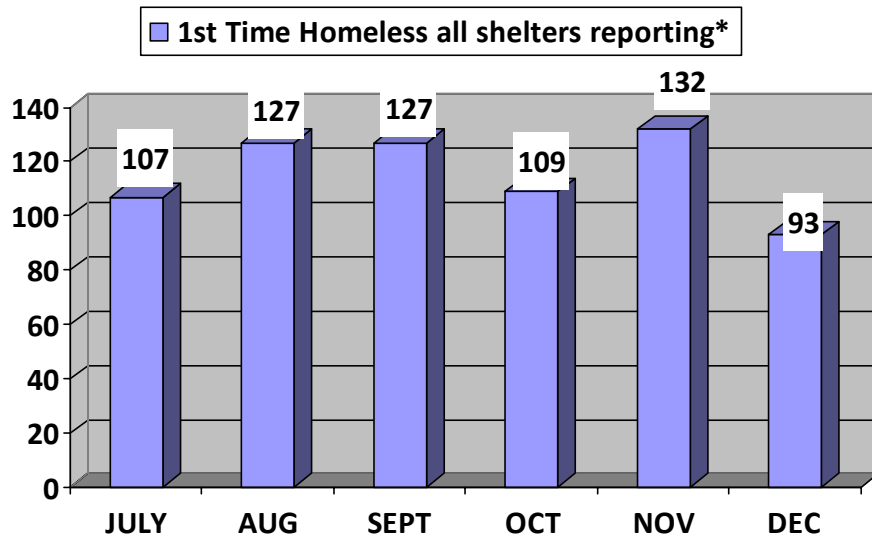
DECEMBER 2009  
 1<sup>st</sup> TIME HOMELESSNESS STATISTICS  
 (BASED ON SELF-REPORTING)

■ Lighthouse 
 ■ Family Shelter 
 ■ Oxford Street 
 ■ Preble Street Women's Shelter



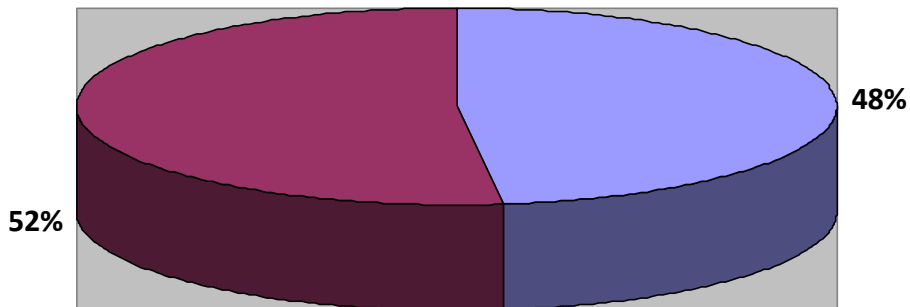
	July	Aug	Sept.	Oct.	Nov.	Dec.
Lighthouse	14	11	16	10	1	6
Family Shelter	44	50	41	27	78	36
Oxford Street	38	51	54	62	52	48
Women's Shelter	11	15	16	10	1	3

DECEMBER 2009  
 1<sup>st</sup> TIME HOMELESSNESS STATISTICS  
 (BASED ON SELF-REPORTING)



*\*"Shelters reporting" includes: the Lighthouse Shelter, Family Shelter, Oxford Street Shelter for Men, and the Preble Street Women's Shelter*

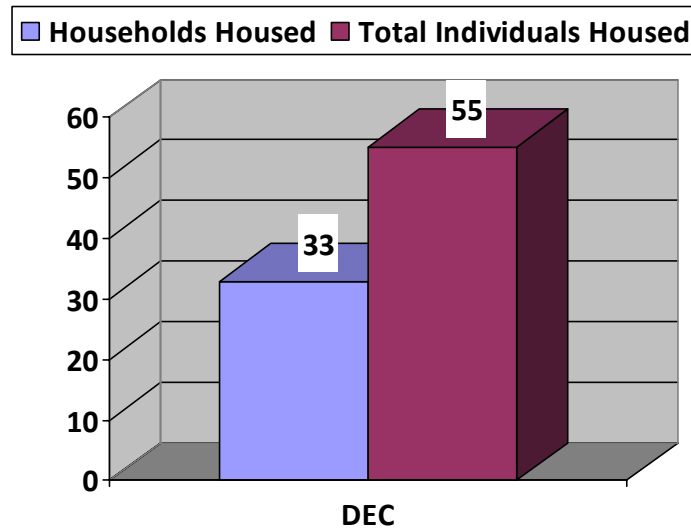
DECEMBER 2009  
 1<sup>st</sup> TIME HOMELESSNESS STATISTICS  
 Percentage of Intakes



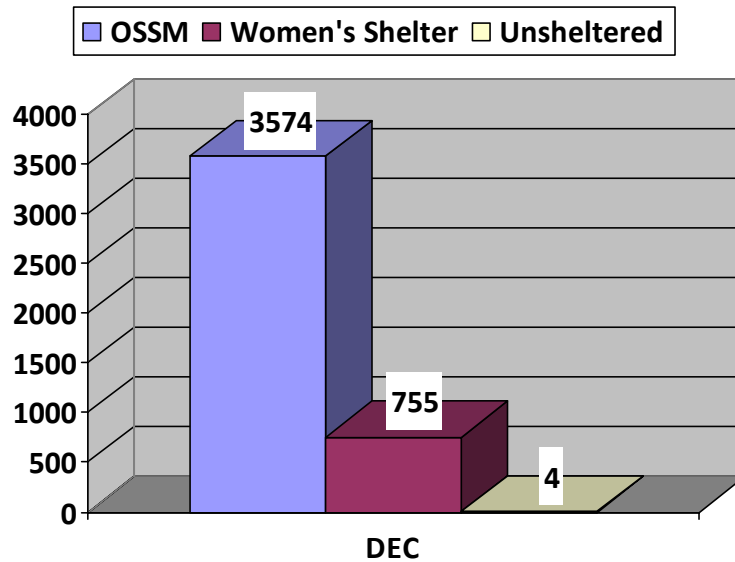
**Total Intakes: 192**  
**1<sup>st</sup> Time Homelessness: 93, or 48% of all intakes**  
**All \*other intakes: 99, or 52% of all intakes**

(\*reported not experiencing homelessness for the 1<sup>st</sup> time, or unknown)

DECEMBER 2009  
Portland Homelessness Prevention & Rapid Re-Housing  
(HPRP)



In the month of December 2009, the Portland HPRP Program housed 35 households, for a total of 55 individuals housed.



**Bed nights Represented by Housing Placements**

<b>OSSM</b>	<b>3574</b>
<b>Women's Shelter</b>	<b>755</b>
<b>Unsheltered</b>	<b>4</b>

