

City of Portland
Health & Human Services Department
Social Services Division

PORTLAND HOMELESS SHELTERS

Total Number of Individuals Residing in Shelters per Night:

	November 2008	November 2009
ADOLESCENTS	10 Individuals	13 Individuals
ADULTS	213 Individuals	230 Individuals
FAMILIES	76 Individuals Average 30 Families	75 Individuals Average 30 Families
Total	299 Individuals	318 Individuals

30 Days in the Month of November

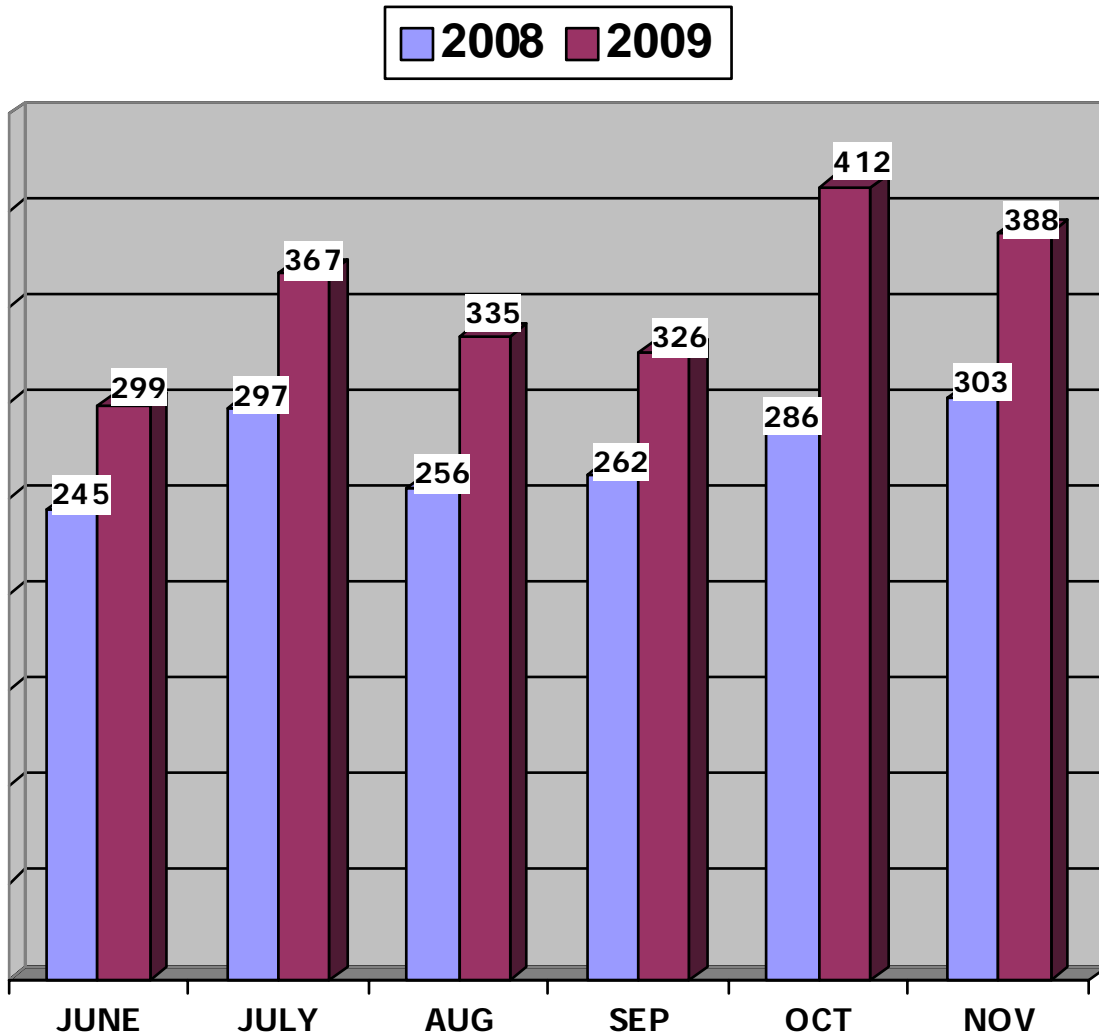
This information is also posted on the City of Portland's website each month.

To view this information, please go to

<http://www.portlandmaine.gov/hhs/ssesac.asp>

Prepared by:
City of Portland
Health & Human Services Department
Social Services Division

NOVEMBER 2009
 ADOLESCENT BEDS USED
 PREBLE STREET LIGHT HOUSE SHELTER



	June	July	Aug.	Sept.	Oct.	Nov.
2008	245	297	256	262	286	303
2009	299	367	335	326	412	388
Percent	18%	19%	24%	24%	44%	28%

PREBLE STREET
 Lighthouse Shelter 16 Beds

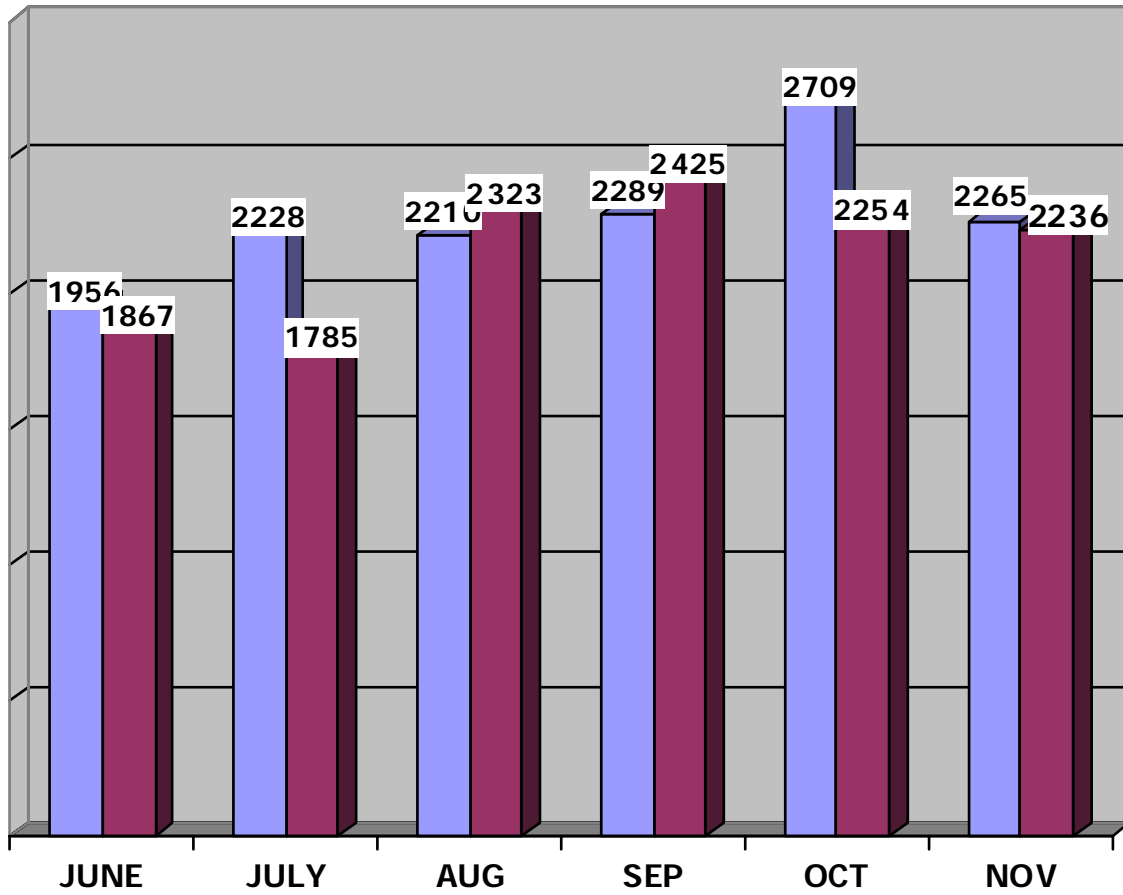
*** EXPERIENCING HOMELESSNESS FOR THE 1ST TIME 1**
 (*BASED ON SELF-REPORTING)

NOVEMBER 2009
 ADOLESCENT SHELTER STATISTICS
 PREBLE STREET LIGHT HOUSE SHELTER

Day of Month	Preble Street	Beds Available
	16	16
1	14	2
2	12	4
3	12	4
4	14	2
5	11	5
6	13	3
7	13	3
8	15	1
9	13	3
10	16	0
11	16	0
12	15	1
13	16	0
14	12	4
15	13	3
16	15	1
17	15	1
18	13	3
19	10	6
20	10	6
21	9	7
22	9	7
23	6	10
24	14	2
25	13	3
26	12	4
27	14	2
28	14	2
29	15	1
30	14	2
Totals	388	92
Ave/Night	13	3

NOVEMBER 2009
FAMILY BEDS USED

2008 2009



	June	July	August	Sept.	Oct.	Nov.
2008	1956	2228	2210	2289	2709	2265
2009	1867	1785	2323	2425	2254	2236
Percent	-5%	-20%	5%	6%	-17%	-1%

HEALTH & HUMAN SERVICES DEPARTMENT
SOCIAL SERVICES DIVISION

Family Shelter 77 Beds

FAMILY CRISIS SHELTER 14 Beds

MAPS SHELTER SERVICES 10 Beds

EMERGENCY SHELTER 4 Beds
General Assistance

NOVEMBER 2009
FAMILY SHELTER STATISTICS

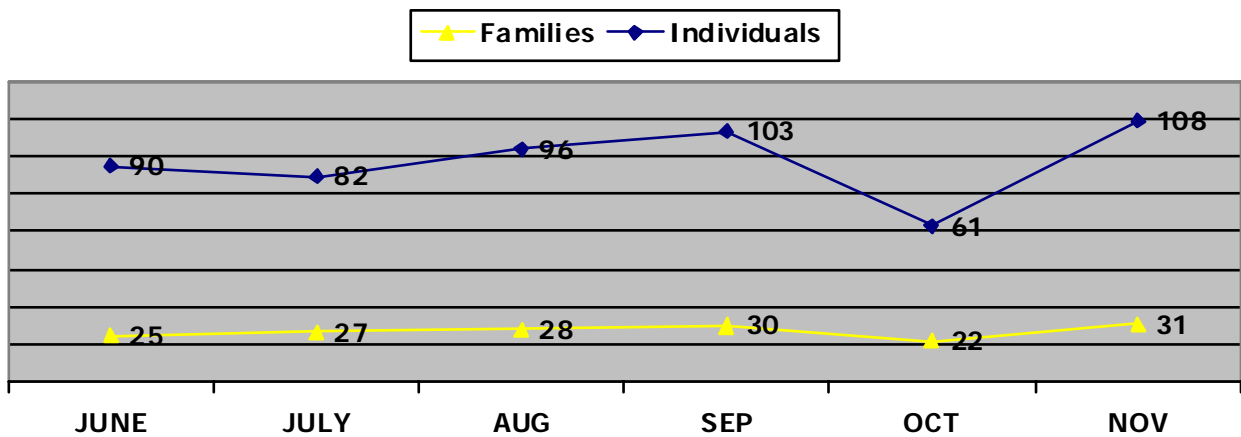
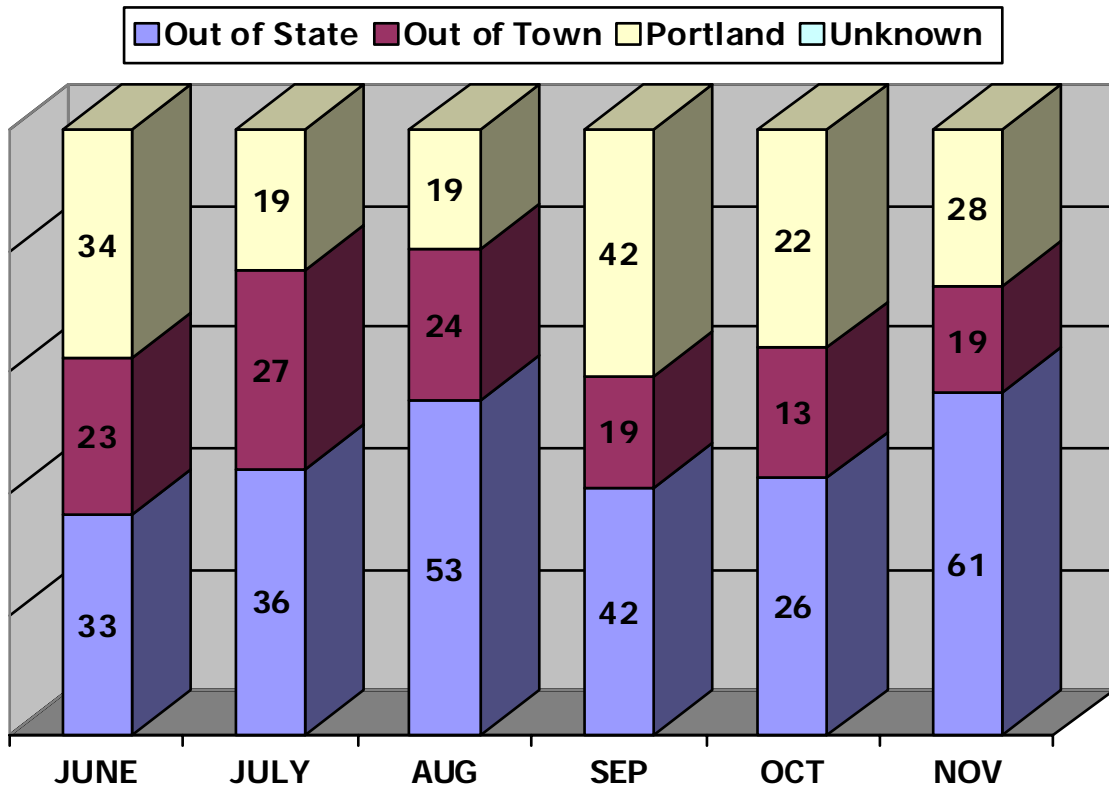
Day of Month	City* (# Families)	City Used	Family Crisis	MAPS Shelter	GA Hotels	Beds Used Per Night	Beds Available
	17	77	14	10			101
1	14	42	11	8	0	61	40
2	13	40	11	8	0	59	42
3	12	37	11	8	0	56	45
4	12	37	11	8	0	56	45
5	12	39	11	8	0	58	43
6	14	44	9	9	0	62	39
7	14	45	9	9	0	63	38
8	14	45	9	9	0	63	38
9	20	66	9	9	0	84	17
10	21	70	9	9	0	88	13
11	21	70	9	9	0	88	13
12	21	70	9	9	0	88	13
13	20	66	9	9	0	84	17
14	21	72	9	9	0	90	11
15	20	68	9	9	0	86	15
16	19	64	9	11	0	84	17
17	21	69	6	11	0	86	15
18	18	55	6	11	0	72	29
19	20	65	6	11	0	82	19
20	20	65	6	11	0	82	19
21	20	65	6	11	0	82	19
22	20	65	6	11	0	82	19
23	19	62	6	11	0	79	22
24	17	57	6	11	0	74	27
25	16	55	6	11	0	72	29
26	16	55	6	8	0	69	32
27	16	55	7	8	0	70	31
28	16	55	7	8	0	70	31
29	16	55	7	8	0	70	31
30	16	58	10	8	0	76	25
Totals	519	1711	245	280	0	2236	794
Ave/Night	17	57	8	9	0	75	26

CITY OF PORTLAND
 Health & Human Services Department
 Social Services Division

Family Shelter

NOVEMBER 2009
 Intake Statistics

Total Number of Individuals



Intake statistic or new arrival is defined as an individual that has not stayed at the Shelter for a period of three (3) months/90-days or longer.

CITY OF PORTLAND
 Health & Human Services Department
 Social Services Division
Family Shelter
 INDIVIDUALS

NOVEMBER 2009

MAINE TOWNS

	Families / Individuals
Auburn	1 / 3
Bath	1 / 4
Biddeford	1 / 4
Bridgeton	1 / 2
Sanford	1 / 4
South Portland	1 / 2

OUT-OF-STATE

	Families / Individuals
Arizona	1 / 3
California	1 / 3
Congo	1 / 3
Connecticut	1 / 4
Florida	2 / 7
Georgia	7 / 30
New York	1 / 3
Ohio	1 / 3
Tennessee	1 / 5

Maine Towns **6** Families for a total of **19** individuals

Out-of-State **16** Families for a total of **61** individuals

Portland **9** families for a total of **28** individuals

TOTAL INTAKES: 31
families for a total of 108 individuals

TOTAL NUMBER OF CLIENTS PLACED IN HOUSING
TOTAL NUMBER OF CLIENTS THAT RETURNED

19 Families / 62 Individuals
0

***EXPERIENCING HOMELESSNESS FOR THE 1ST TIME**
(*BASED ON SELF-REPORTING)

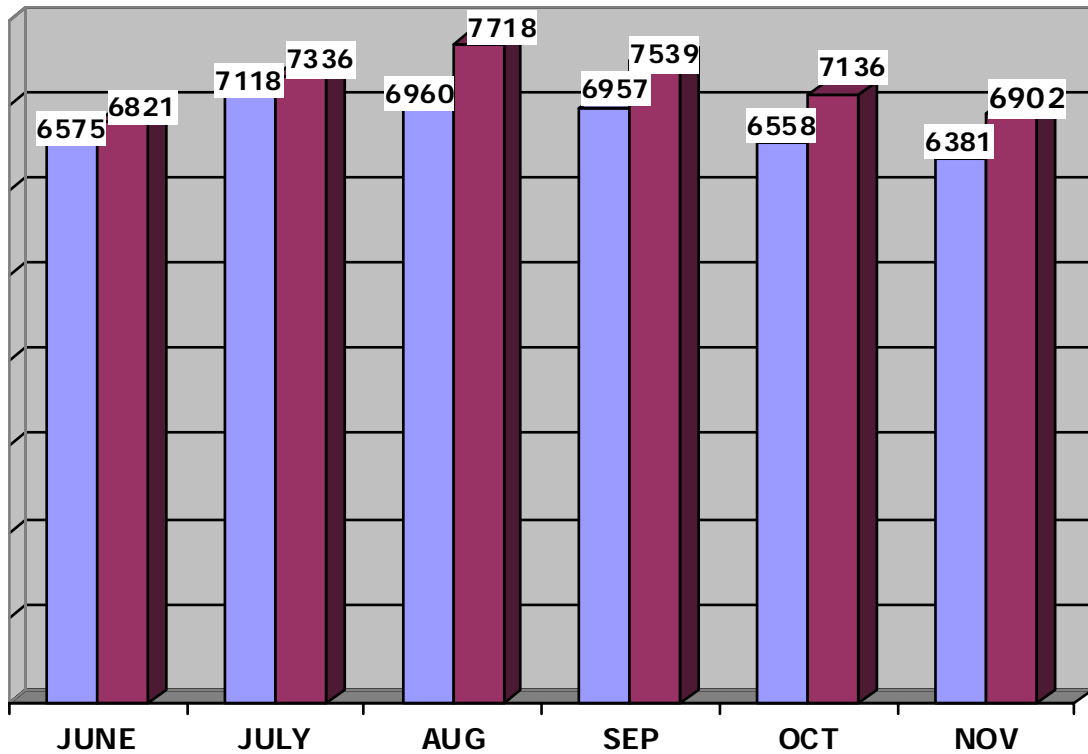
20 Families / 78 Individuals

*Refugees experiencing homelessness for the 1st time

12 Families / 46 Individuals

NOVEMBER 2009
ADULT SHELTER
STATISTICS

2008 2009



	June	July	August	Sept.	Oct.	Nov.
2008	6575	7118	6960	6957	6558	6381
2009	6821	7336	7718	7539	7136	6902
Percent	4%	3%	11%	8%	9%	8%

MILESTONE FOUNDATION
Substance Abuse Shelter 41 Beds

HEALTH & HUMAN SERVICES DEPARTMENT
SOCIAL SERVICES DIVISION
Oxford Street Shelter for Men 129 Beds

PREBLE STREET
Women's Shelter 45 Beds

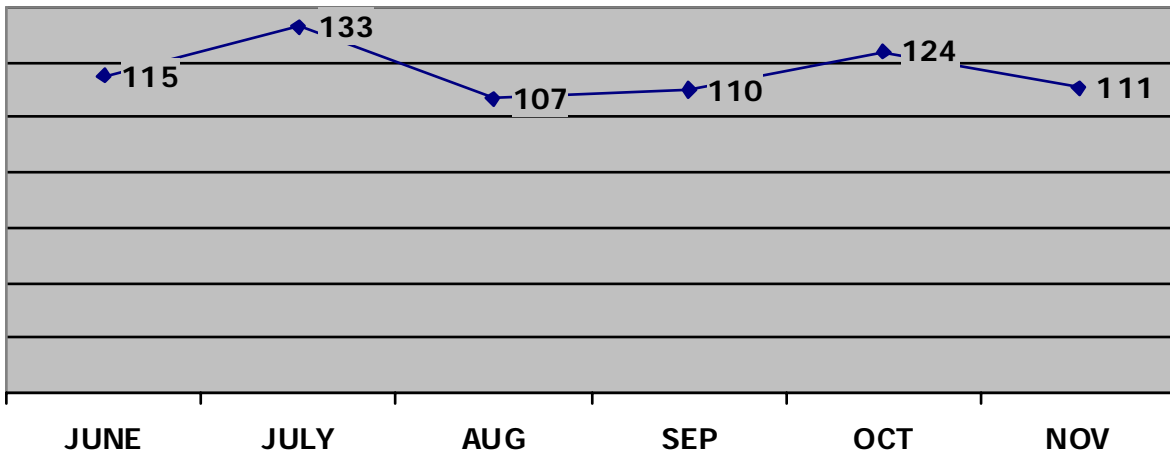
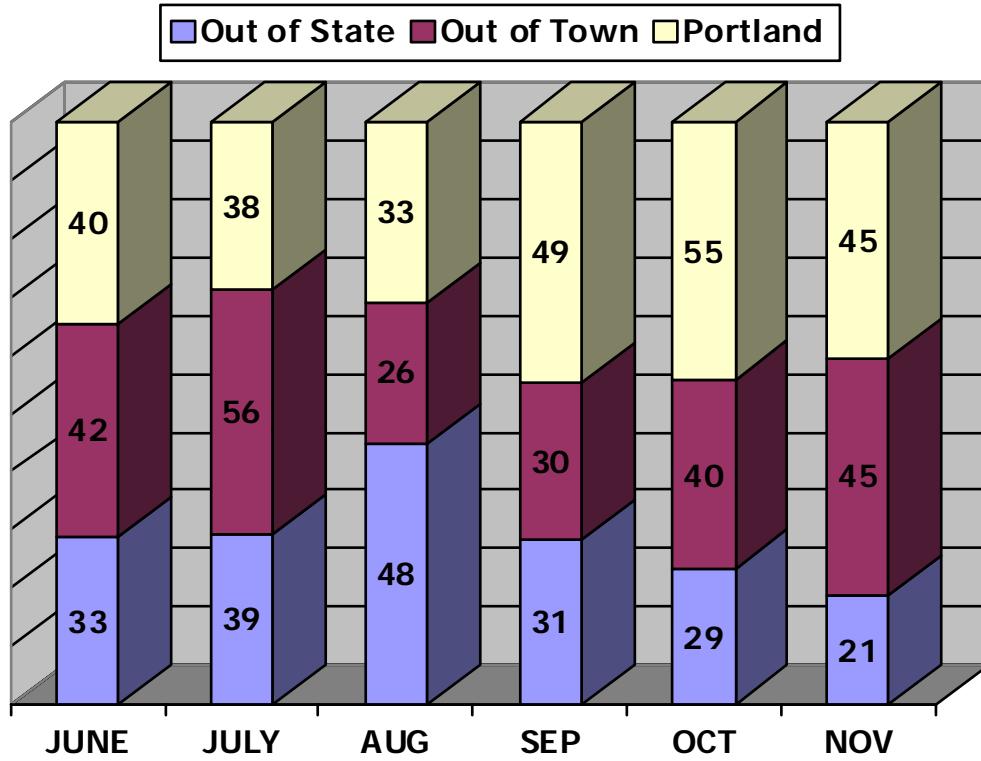
NOVEMBER 2009
ADULT SHELTER STATISTICS

Day of Month	Milestone	Oxford St	PS Women's Shelter	Beds Used per Night
	41	129	45	
1	44	128	46	218
2	48	135	54	237
3	46	117	51	214
4	46	137	57	240
5	46	127	57	230
6	44	114	55	213
7	39	127	63	229
8	44	124	59	227
9	47	139	64	250
10	45	130	65	240
11	47	131	63	241
12	49	134	66	249
13	41	126	61	228
14	39	118	52	209
15	37	126	55	218
16	44	132	59	235
17	48	143	64	255
18	48	131	62	241
19	46	130	64	240
20	41	125	58	224
21	46	124	59	229
22	40	125	61	226
23	46	129	60	235
24	46	134	60	240
25	41	114	54	209
26	45	124	52	221
27	43	126	49	218
28	43	125	53	221
29	46	136	54	236
30	45	125	59	229
TOTAL	1330	3836	1736	6902
Ave/Night	44	128	58	230

CITY OF PORTLAND
Health & Human Services Department
Social Services Division

Oxford Street Shelter

NOVEMBER 2009
Intake Statistics



Intake statistic or new arrival is defined as an individual that has not stayed at the Shelter for a period of three (3) months/90-days or longer.

CITY OF PORTLAND
 Health & Human Services Department
 Social Services Division
Oxford Street Shelter for Men

NOVEMBER 2009

MAINE TOWN		OUT-OF-STATE			
Alfred	1	Arizona	1		
Augusta	1	Burundi	1		
Bangor	4	Florida	3		
Bath	3	Illinois	1		
Biddeford	2	Iowa	1		
Brunswick	2	Kentucky	1		
Calais	1	Louisiana	1		
Fryeburg	1	Massachusetts	3		
Gorham	1	New Hampshire	3		
Gray	1	New Jersey	1		
Greenwood	1	New York	2		
Hallowell	1	Tennessee	1		
Lebanon	1	Vermont	1		
Lewiston	1	Washington	1		
Limington	2				
Lincolnton	1				
Old Orchard Beach	4				
Orient	1				
Oxford	1				
Sanford	2				
South Portland	3				
Springvale	1				
Warren	1				
Waterville	2				
Wells	1				
Westbrook	4				
Windham	1				
Maine Towns	45	Out-of-State	21	Portland	45
				TOTAL INTAKES	111

TOTAL NUMBER OF MEN SERVED (Unduplicated Clients) 363

TOTAL NUMBER OF CLIENTS PLACED IN HOUSING 34

TOTAL NUMBER OF CLIENTS THAT RETURNED 5

TOTAL NUMBER OF CLIENTS PLACED AT THE YMCA 6

***INTAKES EXPERIENCING HOMELESSNESS FOR THE 1ST TIME 52**

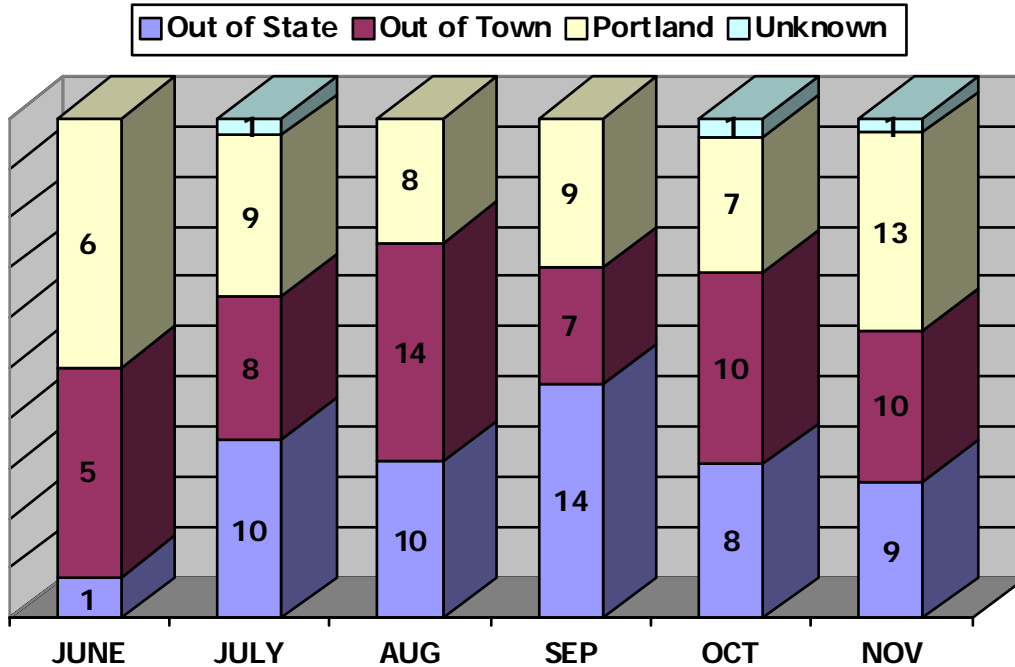
(*BASED ON SELF-REPORTING)

PREBLE STREET

Preble Street Women's Shelter

NOVEMBER 2009

Intake Statistics



MAINE TOWNS

Lewiston	1
Lincolnton	1
Sanford	1
South Portland	3
Waterville	1
Westbrook	1
Windham	1
York	1

OUT-OF-STATE

California	1
Georgia	1
Massachusetts	1
New Hampshire	1
Oregon	2
Quebec	1
South Carolina	1
Virgin Islands	1

Maine Towns 10

Out-of-State 9

Portland 13

Unknown 1

TOTAL INTAKES: 33

TOTAL NUMBER OF WOMEN SERVED (Unduplicated Clients) 113

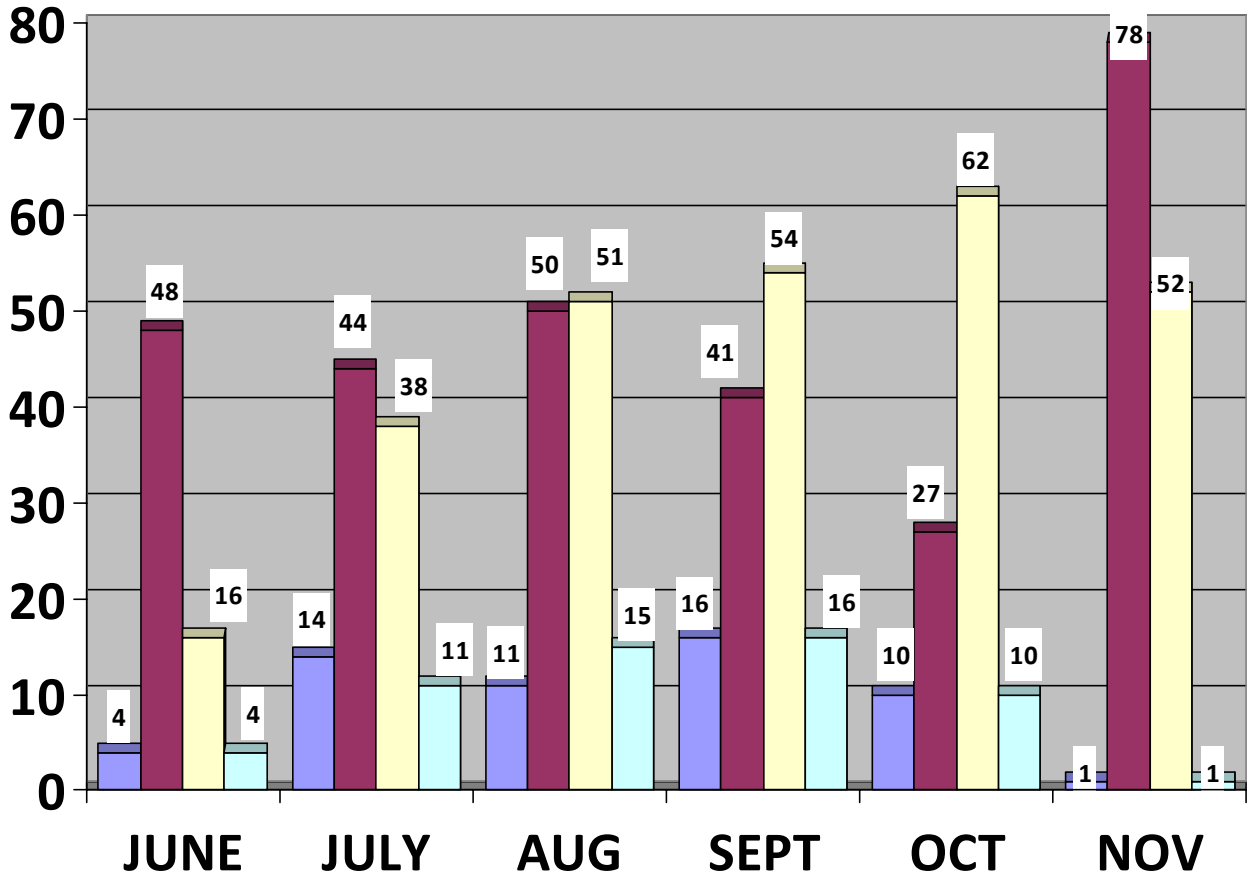
TOTAL NUMBER OF WOMEN PLACED IN HOUSING 9

TOTAL NUMBER OF WOMEN THAT RETURNED 2

***INTAKES EXPERIENCING HOMELESSNESS FOR THE 1ST TIME 12**

(*BASED ON SELF-REPORTING)

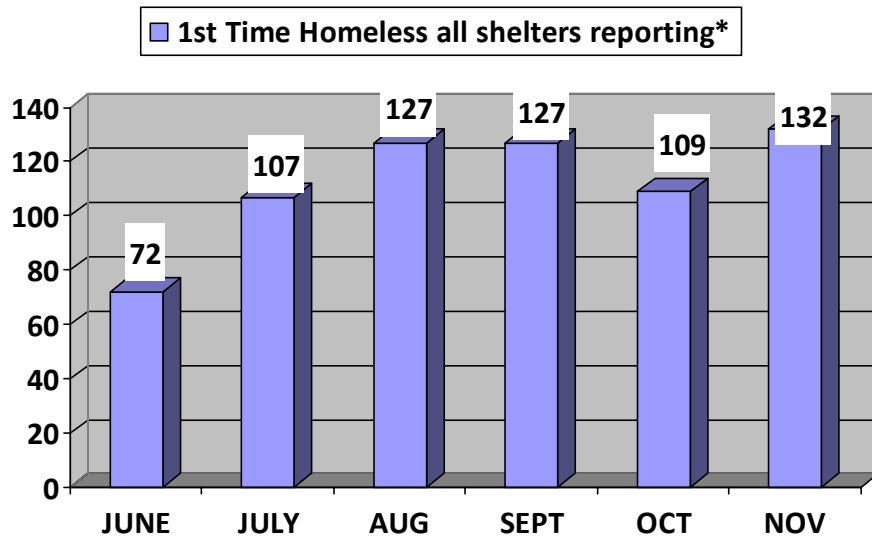
NOVEMBER 2009
 1st TIME HOMELESSNESS STATISTICS
 (BASED ON SELF-REPORTING)



	June*	July	Aug	Sept.	Oct.	Nov.
Lighthouse	4	14	11	16	10	1
Family Shelter	48	44	50	41	27	78
Oxford Street	16	38	51	54	62	52
Women's Shelter	4	11	15	16	10	1

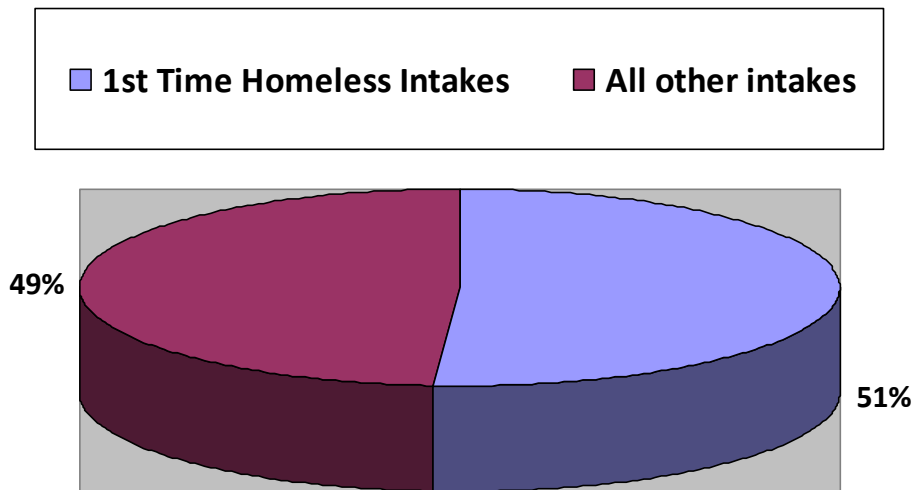
**June is the first month this data was collected among intakes at the shelters. Thus, some figures may not reflect accurate data in the month of June.*

NOVEMBER 2009
 1st TIME HOMELESSNESS STATISTICS
 (BASED ON SELF-REPORTING)



**"Shelters reporting" includes: the Lighthouse Shelter, Family Shelter, Oxford Street Shelter for Men, and the Preble Street Women's Shelter*

NOVEMBER 2009
 1st TIME HOMELESSNESS STATISTICS
 Percentage of Intakes



Total Intakes: 260
1st Time Homelessness: 132, or 51% of all intakes
All *other intakes: 128, or 49% of all intakes

(*reported not experiencing homelessness for the 1st time, or unknown)