

City of Portland
Health & Human Services Department
Social Services Division

PORTLAND HOMELESS SHELTERS

Total Number of Individuals Residing in Shelters per Night:

	January 2009	January 2010
ADOLESCENTS	9 Individuals	14 Individuals
ADULTS	209 Individuals	217 Individuals
FAMILIES	53 Individuals Average 10 Families	76 Individuals Average 14 Families
Total	271 Individuals	307 Individuals

31 Days in the Month of January

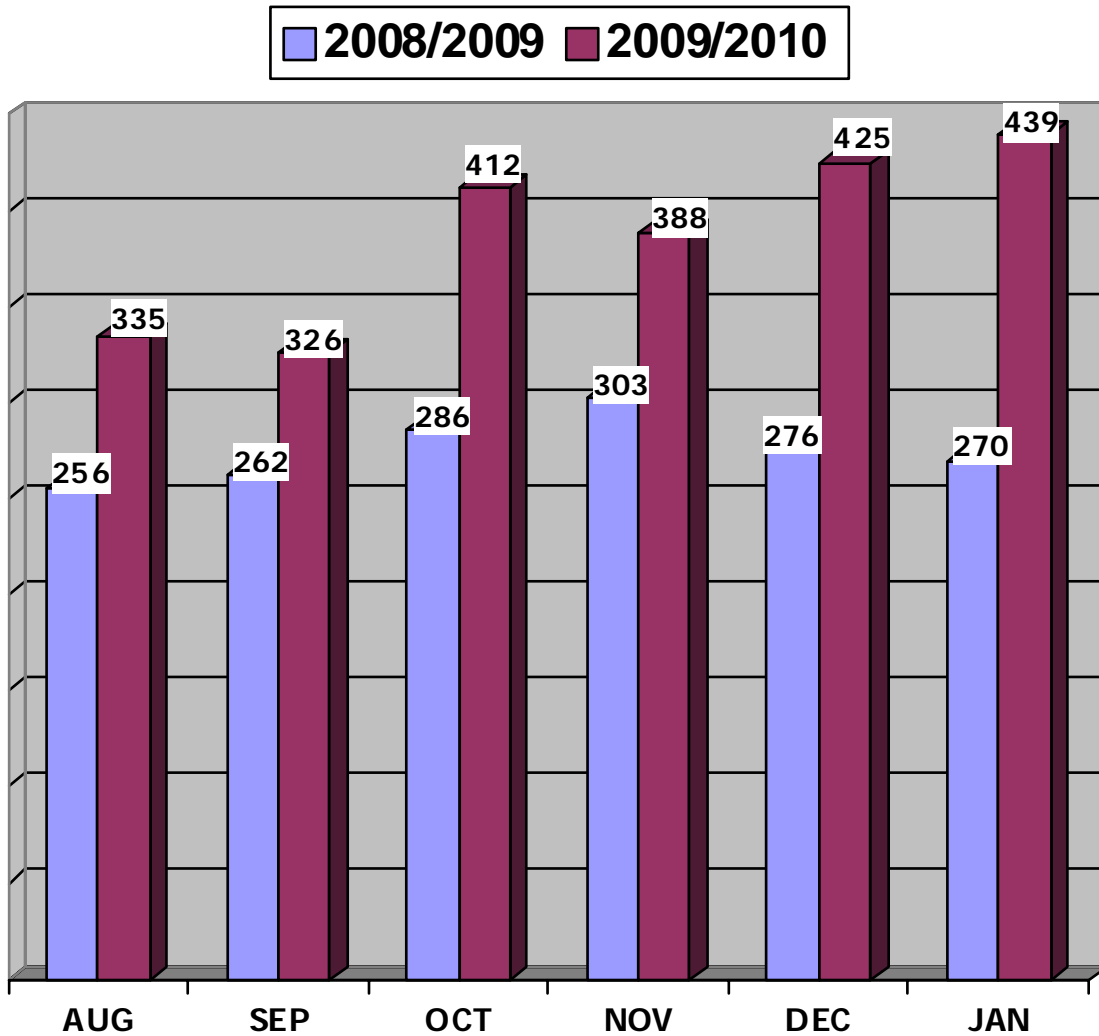
This information is also posted on the City of Portland's website each month.

To view this information, please go to

<http://www.portlandmaine.gov/hhs/ssesac.asp>

Prepared by:
City of Portland
Health & Human Services Department
Social Services Division

JANUARY 2010
 ADOLESCENT BEDS USED
 PREBLE STREET LIGHT HOUSE SHELTER



	AUG	SEP	OCT	NOV	DEC	JAN
	Aug.	Sept.	Oct.	Nov.	Dec.	Jan.
2008	256	262	286	303	276	270
2009	335	326	412	388	425	439
Percent	24%	24%	44%	28%	54%	63%

PREBLE STREET
 Lighthouse Shelter 16 Beds

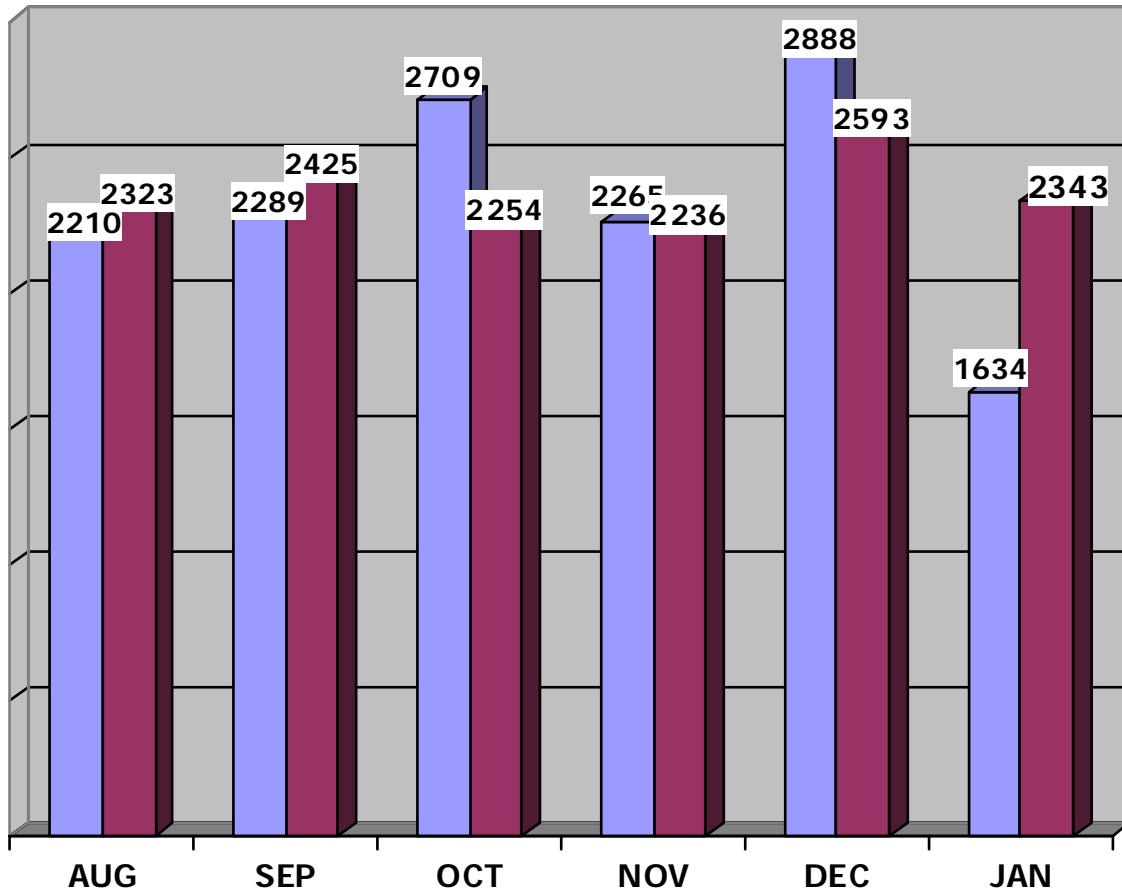
TOTAL NEW INTAKES: 12
 *EXPERIENCING HOMELESSNESS FOR THE 1ST TIME 5
 (*BASED ON SELF-REPORTING)

JANUARY 2010
 ADOLESCENT SHELTER STATISTICS
 PREBLE STREET LIGHT HOUSE SHELTER

Day of Month	Preble Street	Beds Available
	16	16
1	14	2
2	12	4
3	13	3
4	11	5
5	10	6
6	10	6
7	16	0
8	15	1
9	15	1
10	14	2
11	16	0
12	16	0
13	10	6
14	16	0
15	15	1
16	16	0
17	14	2
18	13	3
19	16	0
20	14	2
21	15	1
22	14	2
23	16	0
24	14	2
25	16	0
26	13	3
27	16	0
28	13	3
29	15	1
30	15	1
31	16	0
Totals	439	57
Ave/Night	14	2

JANUARY 2010
FAMILY BEDS USED

2008/2009 2009/2010



	August	Sept.	Oct.	Nov.	Dec.	Jan.
2008	2210	2289	2709	2265	2888	1634
2009	2323	2425	2254	2236	2593	2343
Percent	5%	6%	-17%	-1%	-10%	43%

HEALTH & HUMAN SERVICES DEPARTMENT
SOCIAL SERVICES DIVISION

- Family Shelter 77 Beds
- FAMILY CRISIS SHELTER 14 Beds
- STEP UP / MAPS SHELTER SERVICES 10 Beds
- EMERGENCY SHELTER 4 Beds
- General Assistance

JANUARY 2010
FAMILY SHELTER STATISTICS

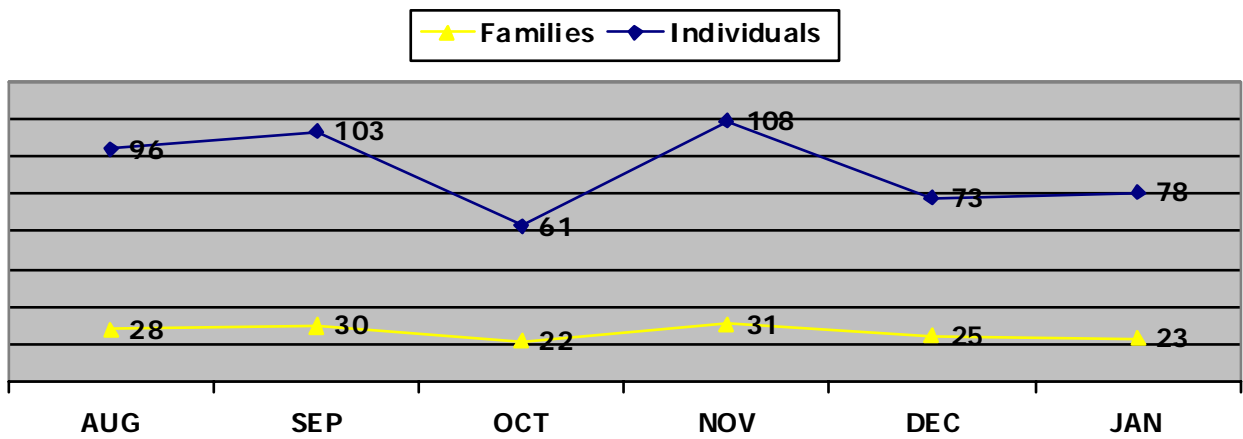
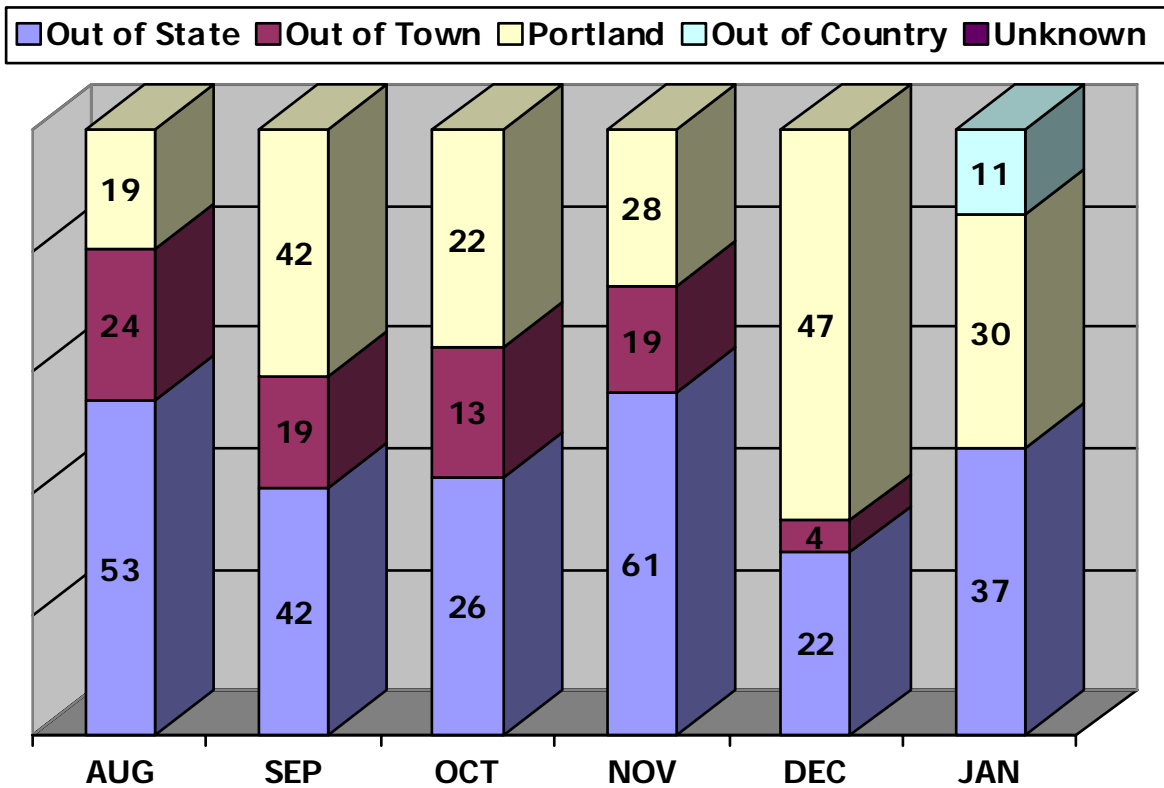
Day of Month	City* (# Families)	City Used	Family Crisis	Step Up / MAPS	GA Hotels	Beds Used Per Night	Beds Available
	17	77	14	10			101
1	15	49	13	13	0	75	26
2	14	41	13	13	0	67	34
3	14	41	13	13	0	67	34
4	15	50	13	13	0	76	25
5	15	48	11	13	0	72	29
6	14	48	10	13	0	71	30
7	13	41	10	13	0	64	37
8	13	42	10	13	0	65	36
9	13	42	10	13	0	65	36
10	13	42	10	13	0	65	36
11	14	45	10	13	0	68	33
12	14	45	13	13	0	71	30
13	13	41	13	13	0	67	34
14	13	41	13	13	0	67	34
15	15	47	10	13	0	70	31
16	14	43	10	13	0	66	35
17	15	45	10	13	0	68	33
18	15	45	10	13	0	68	33
19	18	60	11	13	0	84	17
20	20	67	11	13	0	91	10
21	20	67	10	13	0	90	11
22	19	64	10	14	0	88	13
23	19	64	10	14	0	88	13
24	19	64	10	14	0	88	13
25	20	67	10	14	0	91	10
26	20	67	10	14	0	91	10
27	18	61	12	14	0	87	14
28	17	53	12	14	0	79	22
29	18	55	11	14	0	80	21
30	17	53	11	14	0	78	23
31	17	53	11	12	0	76	25
Totals	494	1591	341	411	0	2343	788
Ave/Night	16	51	11	13	0	76	25

CITY OF PORTLAND
 Health & Human Services Department
 Social Services Division

Family Shelter

JANUARY 2010
 Intake Statistics

Total Number of Individuals



Intake statistic or new arrival is defined as an individual that has not stayed at the Shelter for a period of three (3) months/90-days or longer.

CITY OF PORTLAND
 Health & Human Services Department
 Social Services Division
Family Shelter
 INDIVIDUALS

JANUARY 2010

MAINE TOWNS Families / Individuals	OUT-OF-STATE Families / Individuals	OUT-OF-COUNTRY* Families / Individuals
	Florida 1 / 7	Angola 1 / 5
	Georgia 1 / 3	Belgium 1 / 3
	Kentucky 1 / 3	Rwanda 1 / 3
	Massachusetts 3 / 7	
	Tennessee 1 / 3	
	Texas 3 / 14	

Out-of-Country **3** Families for
a total of **11** individuals

Maine Towns **0** Families for a
total of **0** individuals

Out-of-State **10** Families for
a total of **37** individuals

Portland **10** families
for a total of **30** individuals

TOTAL INTAKES: 23
families for a total of 78
individuals

*Out-of-country intakes represent individuals with B1/B2 status, and thus do not qualify for services for Primary Refugees. The B-1 visa is for individuals who wish to visit the United States temporarily for business purposes, (e.g. conferences) or for medical treatment, or to accompany a family member who is requires medical treatment. The B-2 visa is for individuals who wish to visit the United States temporarily or to visit family or friends.

TOTAL NUMBER OF CLIENTS SERVED (Unduplicated Clients) 23 Families /74 Individuals

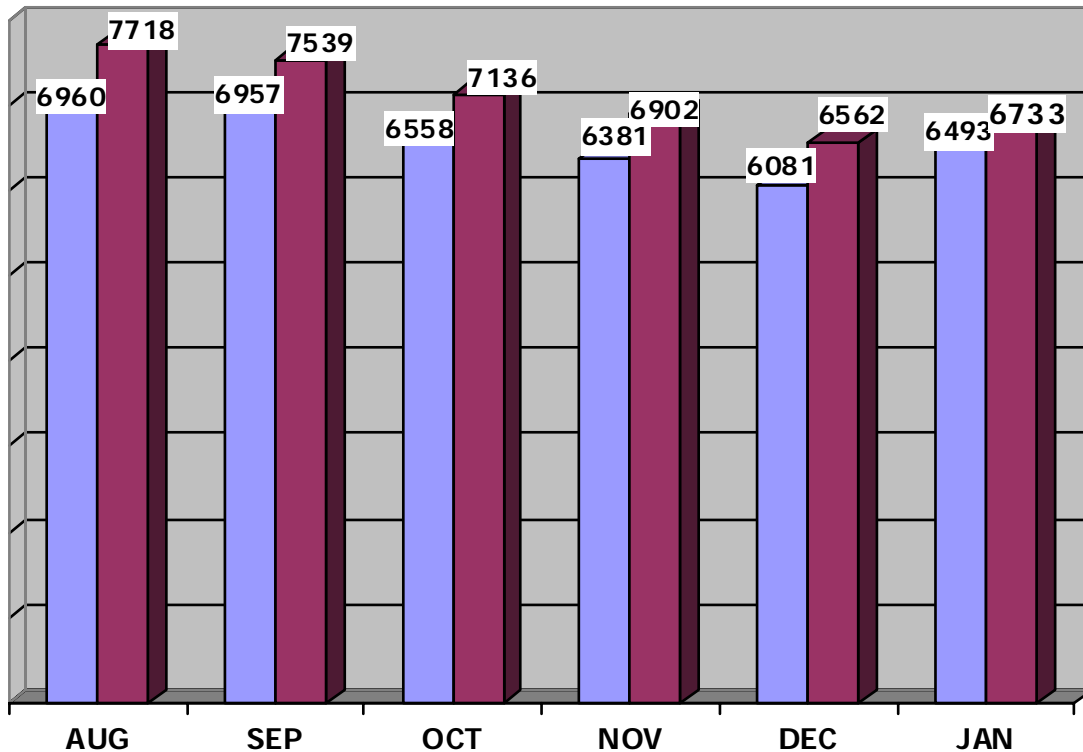
TOTAL NUMBER OF CLIENTS PLACED IN HOUSING 14 Families / 54 Individuals
TOTAL NUMBER OF CLIENTS THAT RETURNED 0

***EXPERIENCING HOMELESSNESS FOR THE 1ST TIME 14 Families / 50 Individuals**
 (*BASED ON SELF-REPORTING)

*Refugees experiencing homelessness for the 1st time 11 Families / 35 Individuals

JANUARY 2010 ADULT SHELTER STATISTICS

2008/2009
 2009/2010



	AUG	SEP	OCT	NOV	DEC	JAN
	August	Sept.	Oct.	Nov.	Dec.	Jan.
2008	6960	6957	6558	6381	6081	6493
2009	7718	7539	7136	6902	6562	6733
Percent	11%	8%	9%	8%	8%	4%

MILESTONE FOUNDATION
Substance Abuse Shelter 41 Beds

HEALTH & HUMAN SERVICES DEPARTMENT
SOCIAL SERVICES DIVISION
Oxford Street Shelter for Men 129 Beds

PREBLE STREET
Women's Shelter 45 Beds

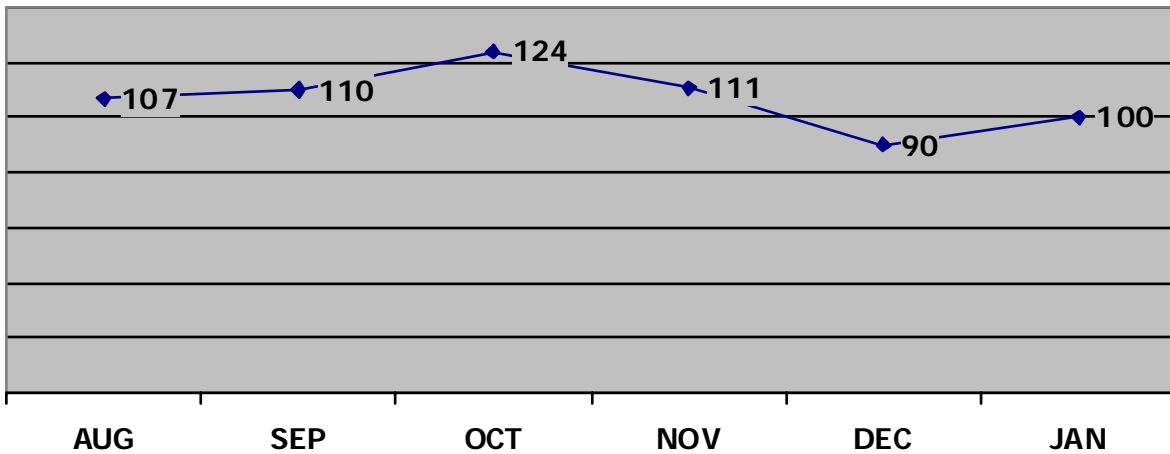
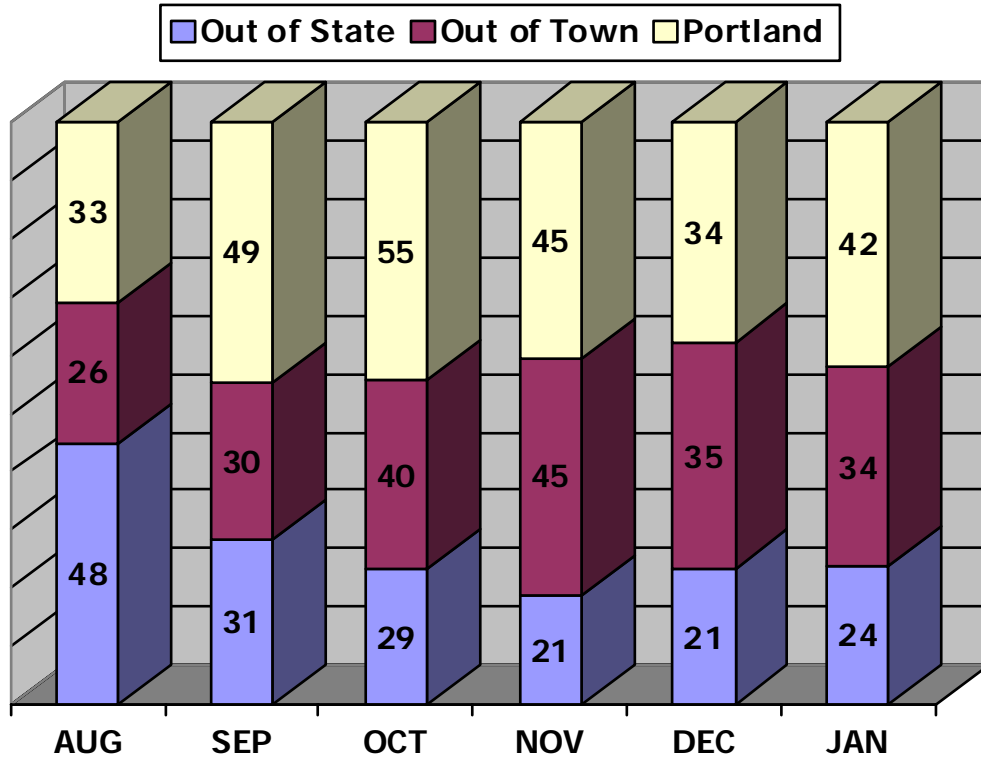
JANUARY 2010
ADULT SHELTER STATISTICS

Day of Month	Milestone	Oxford St	PS Women's Shelter	Beds Used per Night
	41	129	45	
1	37	122	31	190
2	40	116	34	190
3	30	128	36	194
4	40	140	40	220
5	41	138	45	224
6	40	135	45	220
7	35	148	47	230
8	39	141	49	229
9	41	143	48	232
10	42	141	48	231
11	43	140	50	233
12	36	139	55	230
13	44	138	58	240
14	41	144	54	239
15	43	124	45	212
16	39	131	40	210
17	38	129	41	208
18	30	143	46	219
19	37	142	45	224
20	41	142	42	225
21	33	138	46	217
22	39	136	40	215
23	43	128	41	212
24	41	135	49	225
25	40	135	50	225
26	40	137	50	227
27	38	126	47	211
28	42	124	44	210
29	33	118	38	189
30	36	117	40	193
31	34	130	45	209
TOTAL	1196	4148	1389	6733
Ave/Night	39	134	45	217

CITY OF PORTLAND
Health & Human Services Department
Social Services Division

Oxford Street Shelter

JANUARY 2010
Intake Statistics



Intake statistic or new arrival is defined as an individual that has not stayed at the Shelter for a period of three (3) months/90-days or longer.

CITY OF PORTLAND
 Health & Human Services Department
 Social Services Division
Oxford Street Shelter for Men

JANUARY 2010

MAINE TOWN		OUT-OF-STATE			
Bangor	2	Arizona	3		
Biddeford	3	California	3		
Brewer	1	Colorado	1		
Elliott	1	Connecticut	1		
Ellsworth	1	Florida	1		
Gorham	1	Massachusetts	4		
Hiram	1	Nevada	1		
Kennebunk	1	New Hampshire	4		
Lewiston	2	New York	1		
Limington	1	Oklahoma	1		
Manchester	1	Oregon	1		
New Gloucester	1	Pennsylvania	1		
Old Orchard Beach	2	Rwanda	1		
Oxford	1	Vermont	1		
Saco	2				
Sanford	1				
Skowhegan	1				
South Portland	4				
Warren	1				
Westbrook	3				
Windham	2				
Wiscasset	1				
Maine Towns	34	Out-of-State	24	Portland	42
				TOTAL INTAKES	100

TOTAL NUMBER OF MEN SERVED (Unduplicated Clients) 332

TOTAL NUMBER OF CLIENTS PLACED IN HOUSING 25

TOTAL NUMBER OF CLIENTS THAT RETURNED 1

TOTAL NUMBER OF CLIENTS PLACED AT THE YMCA 2

***INTAKES EXPERIENCING HOMELESSNESS FOR THE 1ST TIME 56**

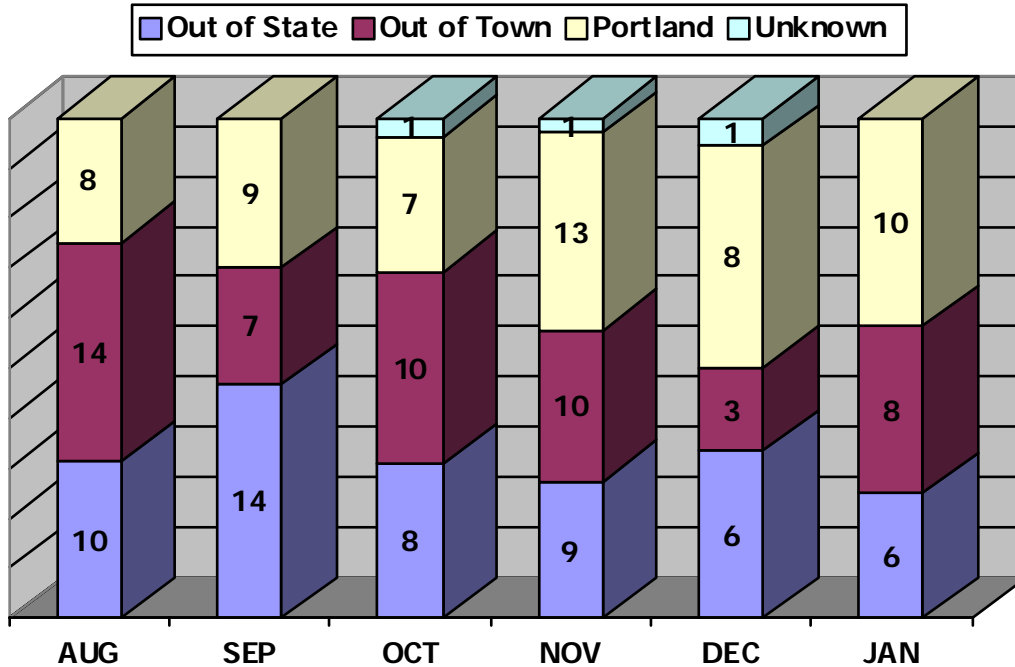
(*BASED ON SELF-REPORTING)

PREBLE STREET

Preble Street Women's Shelter

JANUARY 2010

Intake Statistics



MAINE TOWNS

Auburn	1
Brunswick	1
Lewiston	1
Old Orchard Beach	1
Perry	2
Saco	1
Standish	1

OUT-OF-STATE

Alaska	1
Connecticut	1
Florida	1
Massachusetts	1
Nevada	1
New Hampshire	1

Maine Towns	8	Out-of-State	6	Portland	10
-------------	---	--------------	---	----------	----

TOTAL INTAKES: 24

TOTAL NUMBER OF WOMEN SERVED (Unduplicated Clients) 101

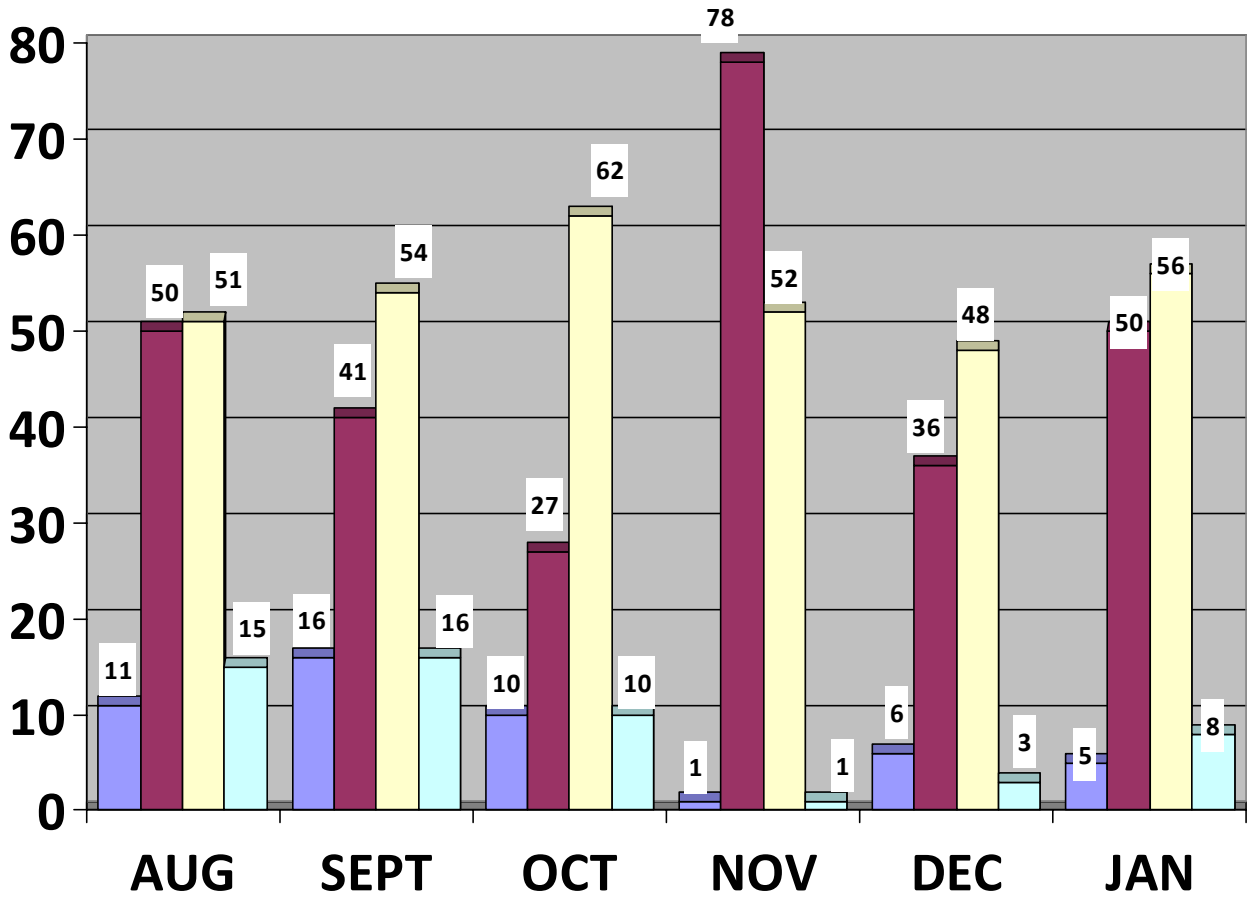
TOTAL NUMBER OF WOMEN PLACED IN HOUSING 10

TOTAL NUMBER OF WOMEN THAT RETURNED 2

***INTAKES EXPERIENCING HOMELESSNESS FOR THE 1ST TIME 8**
 (*BASED ON SELF-REPORTING)

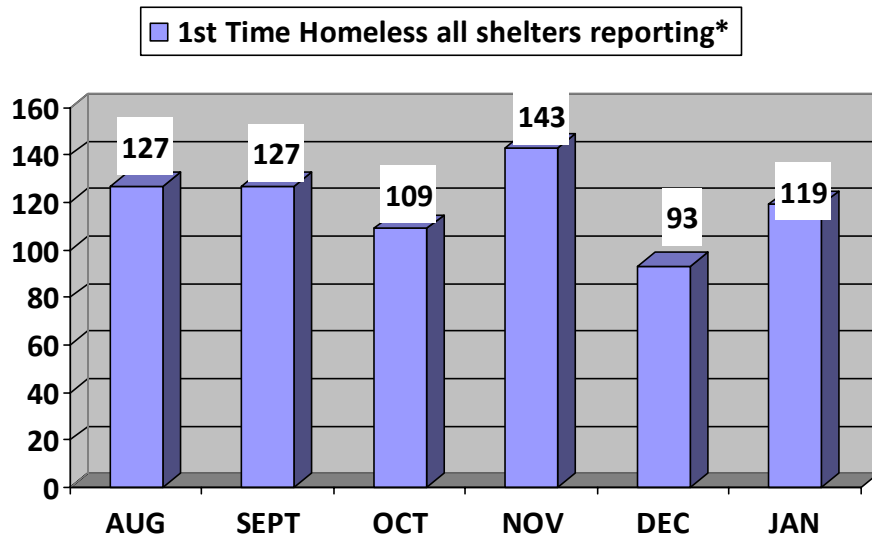
JANUARY 2010
 1st TIME HOMELESSNESS STATISTICS
 (BASED ON SELF-REPORTING)

■ Lighthouse
 ■ Family Shelter
 ■ Oxford Street
 ■ Preble Street Women's Shelter



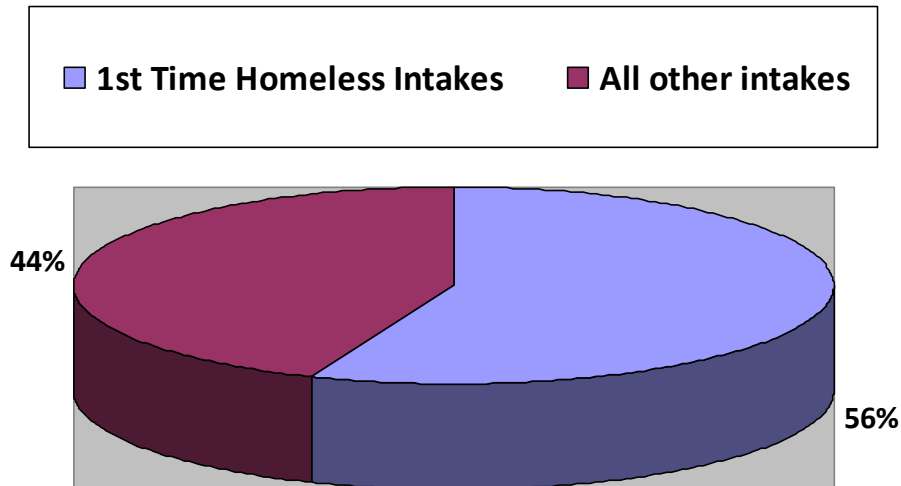
	Aug	Sept.	Oct.	Nov.	Dec.	Jan.
Lighthouse	11	16	10	1	6	5
Family Shelter	50	41	27	78	36	50
Oxford Street	51	54	62	52	48	56
Women's Shelter	15	16	10	1	3	8

JANUARY 2010
 1st TIME HOMELESSNESS STATISTICS
 (BASED ON SELF-REPORTING)



**"Shelters reporting" includes: the Lighthouse Shelter, Family Shelter, Oxford Street Shelter for Men, and the Preble Street Women's Shelter*

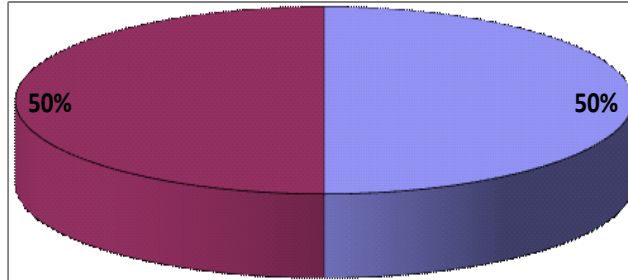
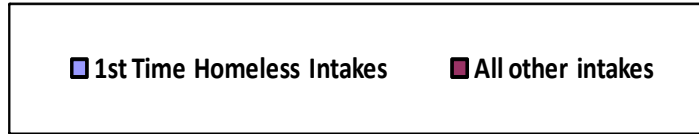
JANUARY 2010
 1st TIME HOMELESSNESS STATISTICS
 Percentage of Intakes



Total Intakes: 214
1st Time Homelessness: 119, or 56% of all intakes
All *other intakes: 95, or 44% of all intakes

(*reported not experiencing homelessness for the 1st time, or unknown)

FY 2009 TO PRESENT
(July 2009 through January 2010)
1st TIME HOMELESSNESS STATISTICS
Percentage of Intakes



Total Intakes:	1642
1st Time Homelessness:	825, or 50% of all intakes
All *other intakes:	817, or 50% of all intakes

(*reported not experiencing homelessness for the 1st time, or unknown)

Shelters Reporting Intake and 1st Time Homelessness Statistics include:

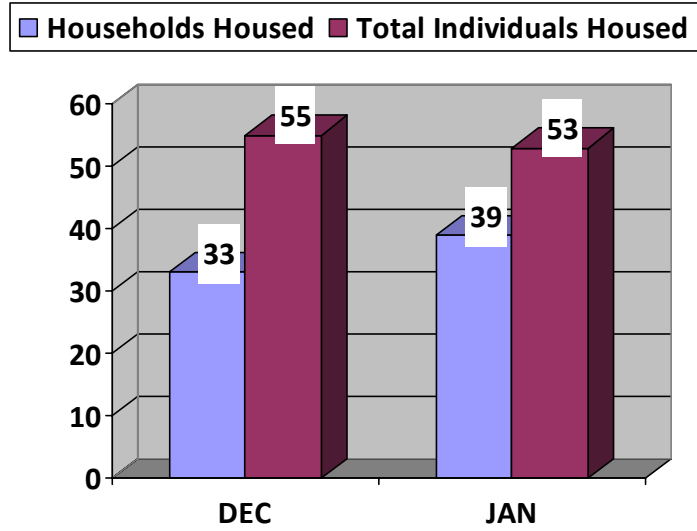
Preble Street Women's Shelter

Lighthouse Shelter

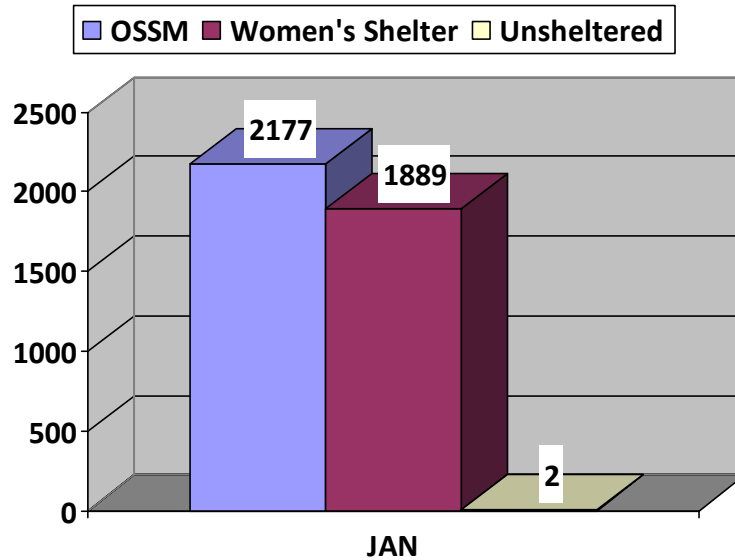
Family Shelter

Oxford Street Shelter for Men

JANUARY 2010
 Portland Homelessness Prevention & Rapid Re-Housing
 (HPRP)



In the month of January 2010, the Portland HPRP Program housed 35 households, for a total of 55 individuals housed.



January 2010 Bed nights Represented by Housing Placements

OSSM	2,177
Women's Shelter	1,889
Unsheltered	2