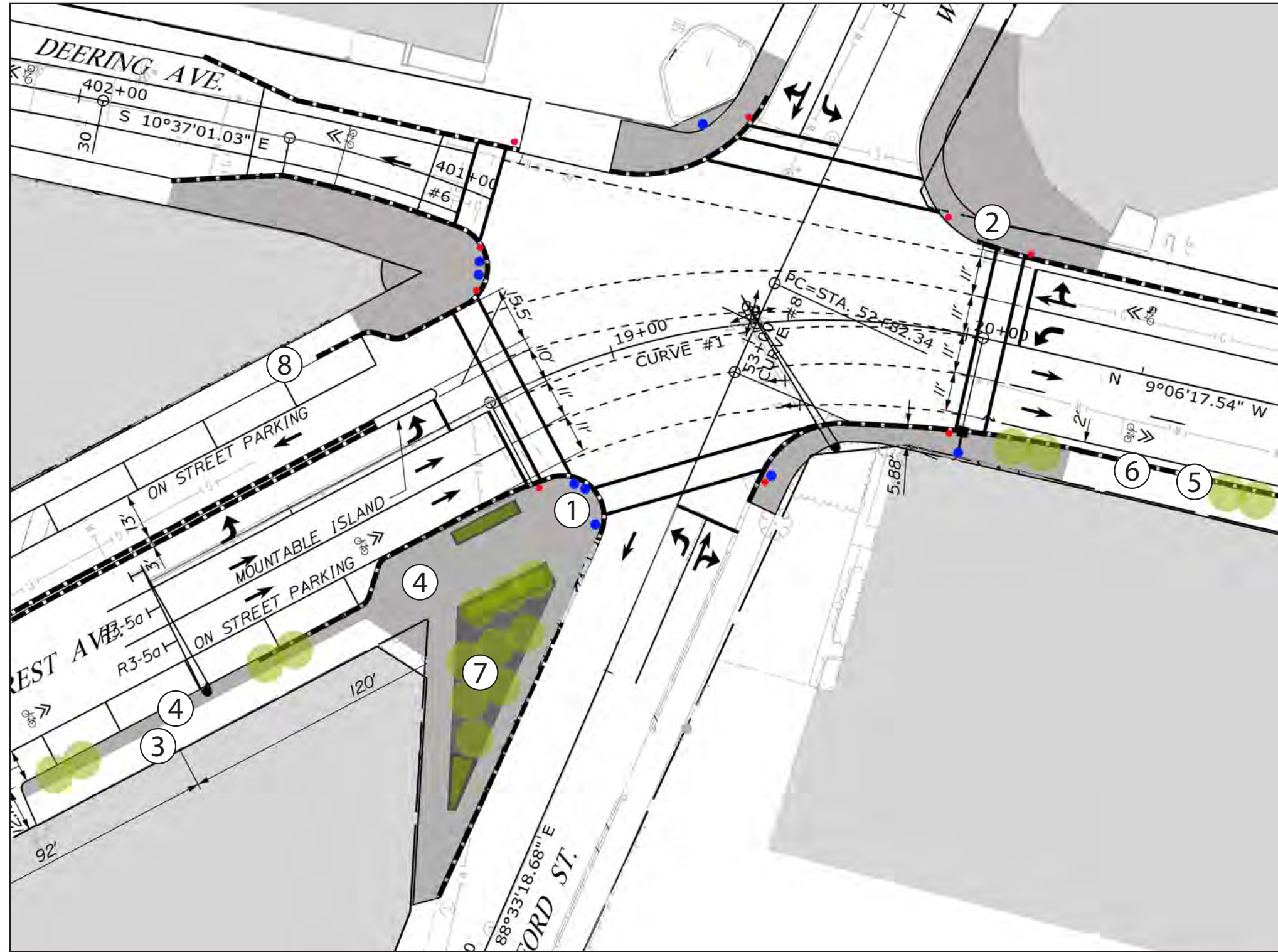


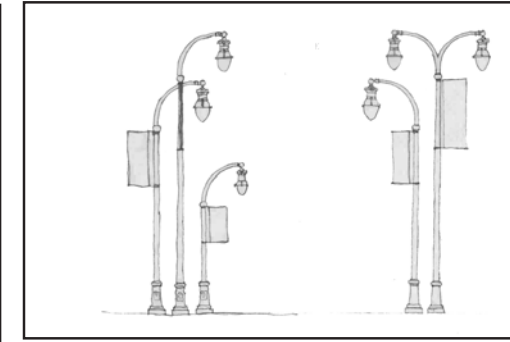
Woodfords Corner Concept Plan



Transforming Forest Avenue calls for Woodfords Corner to be a central place in the corridor with distinctive placemaking elements.

In the plaza space created by losing the existing slip lane, we propose a raised planter at the curb edge to provide a separation from the pedestrian plaza and the busy intersection. A larger raised tree planter with seating wall around all edges shall create an edge for the space and provide seating. A bosque of trees (to be selected with the City Arborist for unique character and seasonal colors) with permeable paving below in the center of the plaza provides space that could be outdoor dining or bench seating slightly removed from the traffic. The bottom edge of the bosque could have a small planting space with raised curb either with a tree or other planting such as ornamental grass or bayberry. Paving for each corner of the intersection will be the granite plank to create a unifying palette and sense of arrival for the pedestrian. The sidewalks approaching Woodfords corner shall use granite plank in the furnishing zone and raised curb double-tree wells where space permits.

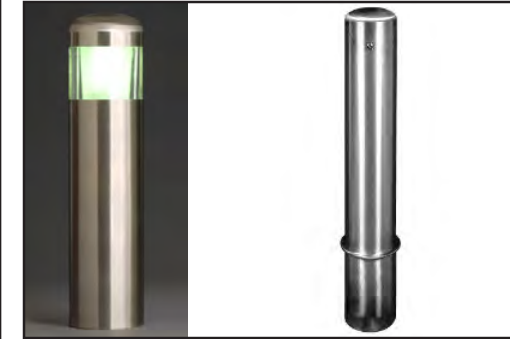
Woodfords Corner Material & Fixture Palette



1. Identity/Placemaking
Bayside street lights placed in groupings, Various height w/ banner arms



5. Street Trees
Raised granite curb, double tree wells



2. Pedestrian Safety @ crosswalks
Lighted bollards, 8" diameter



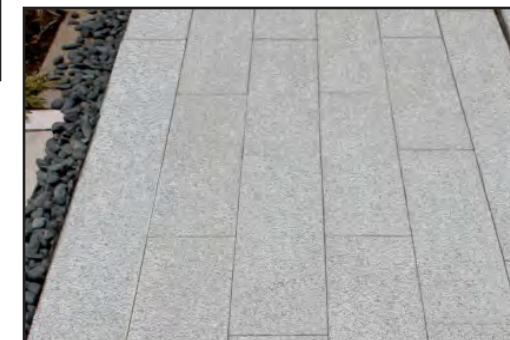
6. Bicycle Parking
City standard hitch (stainless steel)



3. Sidewalk Material
Seamed concrete, Width varies



7. Bench (optional)
Parc Vue, Locations TBD



4. Furnishing Zone + Plazas
Granite planks



8. Trash Receptacle (optional)
City standard (light silver finish), Locations TBD