

City of Portland  
Health & Human Services Department  
Social Services Division

PORTLAND HOMELESS SHELTERS

**Total Number of Individuals Residing in Shelters per Night:**

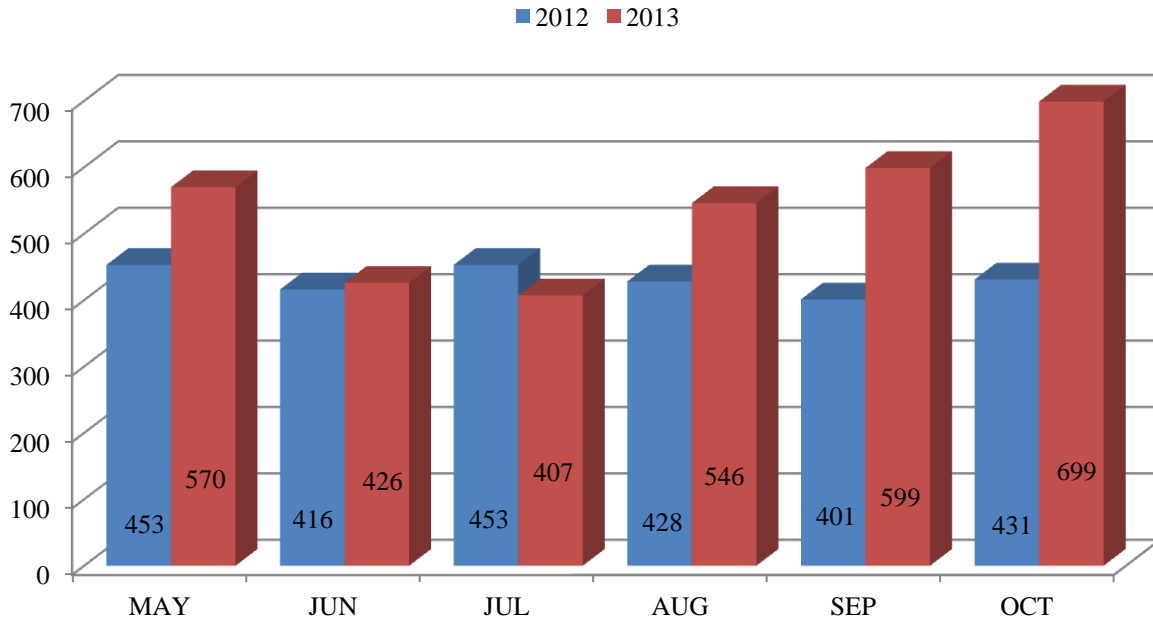
	October 2012	October 2013
ADOLESCENTS	14 Individuals	23 Individuals
ADULTS	300 Individuals	302 Individuals
FAMILIES	120 Individuals 47 Average Families	160 Individuals 49 Average Families
Total	434 Individuals	<b>485 Individuals</b>

31 Days in the Month of October

This information is also posted on the City of Portland's website each month.  
To view this information, please go to <http://www.portlandmaine.gov/hhs/ssesac.asp>

Prepared by:  
City of Portland  
Health & Human Services Department  
Social Services Division

**PREBLE STREET JOE KREISLER TEEN SHELTER\***  
**OCTOBER 2013**  
**ADOLESCENT BEDS USED**



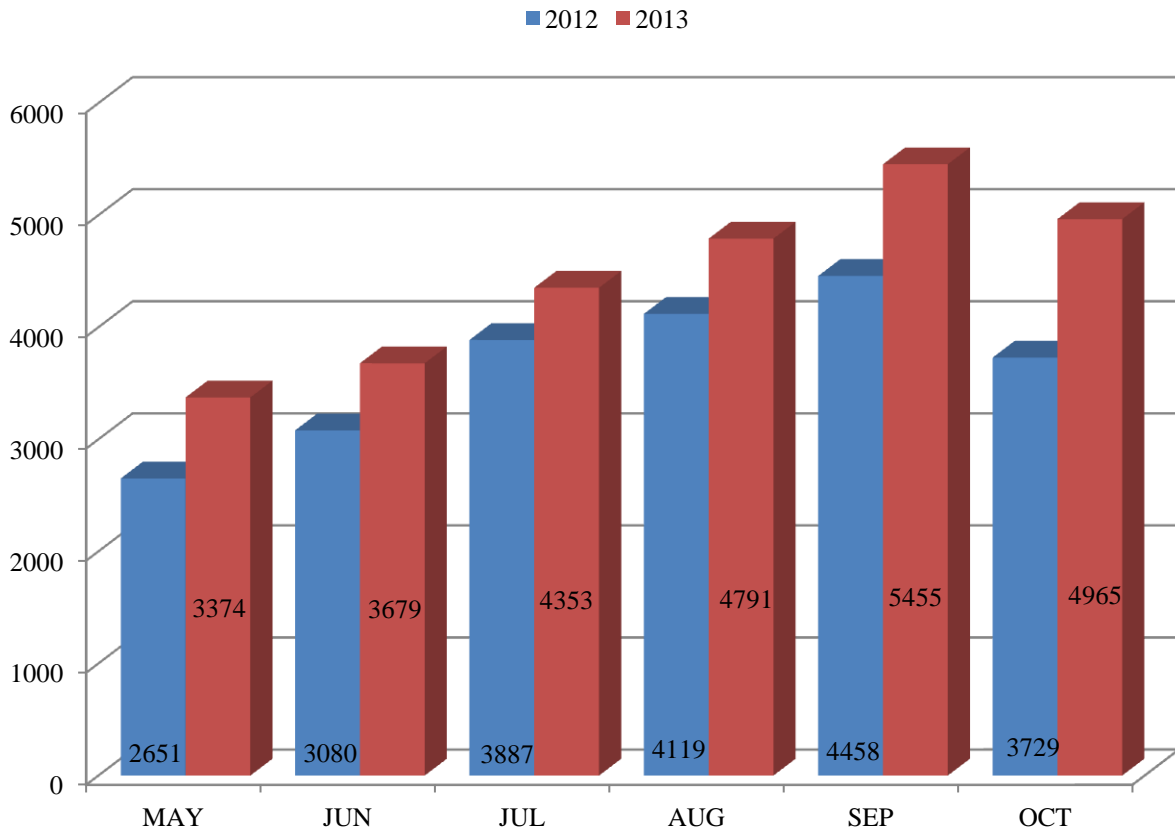
	May	Jun	Jul	Aug	Sep	Oct
<b>2012</b>	453	416	453	428	401	431
<b>2013</b>	570	426	407	546	599	699
<b>Percent</b>	+26%	+2%	-10%	+28%	+49%	+62%

**PREBLE STREET**  
**Joe Kreisler Teen Shelter\***      **24 Beds**  
 (Opened 1/6/2013)

	Bed nights
Capacity	744
Month Total	699
<b>Avg/Night</b>	<b>23</b>
Highest Night	24
Lowest Night	19

<b>UNDUPLICATED YOUTH:</b>	<b>54</b>
<b>TOTAL NEW INTAKES:</b>	<b>16</b>
<b>TOTAL HOUSING PLACEMENTS:</b>	<b>2</b>
• TH PLACEMENTS	1
• PH PLACEMENTS	1
<b>TOTAL RETURNS:</b>	<b>2</b>
<b>*EXPERIENCING HOMELESSNESS FOR THE 1<sup>ST</sup> TIME</b>	<b>9</b>
(*BASED ON SELF-REPORTING)	
<b>TOTAL YOUTH TURNED AWAY DUE TO REACHING CAPACITY</b>	<b>46</b>

**PORTLAND, CITY-WIDE  
OCTOBER 2013  
FAMILY BEDS USED**



	<b>May</b>	<b>Jun</b>	<b>Jul</b>	<b>Aug</b>	<b>Sep</b>	<b>Oct</b>
<b>2012</b>	2651	3080	3887	4119	4458	3729
<b>2013</b>	3374	3662	4353	4791	5455	4965
<b>Percent</b>	+27%	+19%	-16%	+28%	+22%	+33%

**FAMILY SHELTER**

**94 Beds**

**FAMILY CRISIS SHELTER**

**16 Beds**

**STEPPING STONES**

**12 Beds**

**EMERGENCY SHELTER  
General Assistance**

**As-Needed**

**PORTLAND, CITY-WIDE  
OCTOBER 2013  
FAMILY SHELTER STATISTICS**

	<i>City*</i> (# Families)	City Used	GA Hotels	Family Crisis	Stepping Stones	Beds Used Per Night
Capacity	24*	94		16	12	122+
Month Total	1,113	3,315	812	435	403	4,965
<b>Avg/Night</b>	<b>36</b>	<b>107</b>	<b>26</b>	<b>14</b>	<b>13</b>	<b>160</b>
Highest Night	44	119	47	16	13	181
Lowest Night	30	97	12	13	13	43

**CITY OF PORTLAND FAMILY SHELTER** **FAMILIES**   **INDIVIDUALS**

<b>UNDUPLICATED FAMILIES/INDIVIDUALS:</b>	<b>56</b>	<b>206</b>
<b>TOTAL NEW INTAKES:</b>	<b>16</b>	<b>58</b>
<b>TOTAL HOUSING PLACEMENTS:</b>	<b>15</b>	<b>68</b>
• <b>TH PLACEMENTS</b>	<b>1</b>	<b>3</b>
• <b>PH PLACEMENTS</b>	<b>14</b>	<b>65</b>
<b>TOTAL RETURNS:</b>	<b>0</b>	<b>0</b>
<b>*EXPERIENCING HOMELESSNESS FOR THE 1<sup>ST</sup> TIME</b>	<b>8</b>	<b>34</b>
(*BASED ON SELF-REPORTING)		

**FAMILY CRISIS** **FAMILIES**   **INDIVIDUALS**

<b>UNDUPLICATED FAMILIES/INDIVIDUALS:</b>	<b>14</b>	<b>28</b>
<b>TOTAL NEW INTAKES:</b>	<b>7</b>	<b>13</b>
<b>TOTAL HOUSING PLACEMENTS:</b>	<b>6</b>	<b>12</b>
• <b>TH PLACEMENTS</b>	<b>3</b>	<b>4</b>
• <b>PH PLACEMENTS</b>	<b>3</b>	<b>8</b>
<b>TOTAL RETURNS:</b>	<b>0</b>	<b>0</b>
<b>*EXPERIENCING HOMELESSNESS FOR THE 1<sup>ST</sup> TIME</b>	<b>5</b>	<b>7</b>
(*BASED ON SELF-REPORTING)		

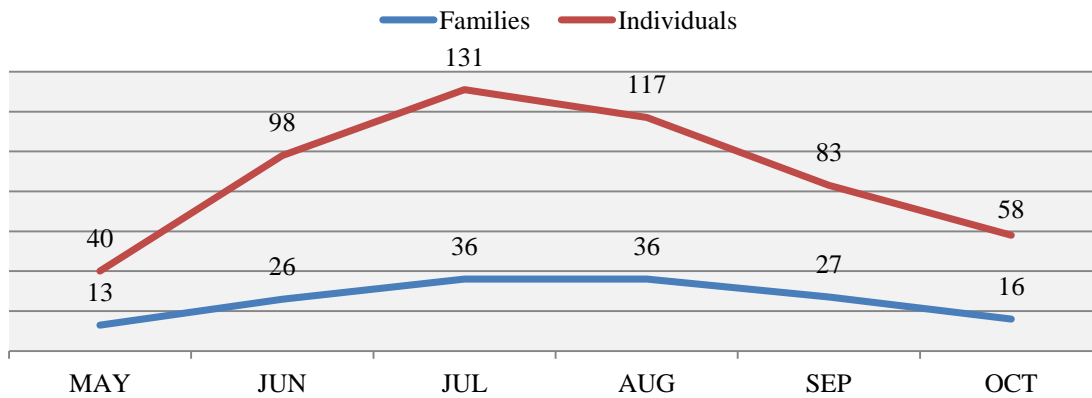
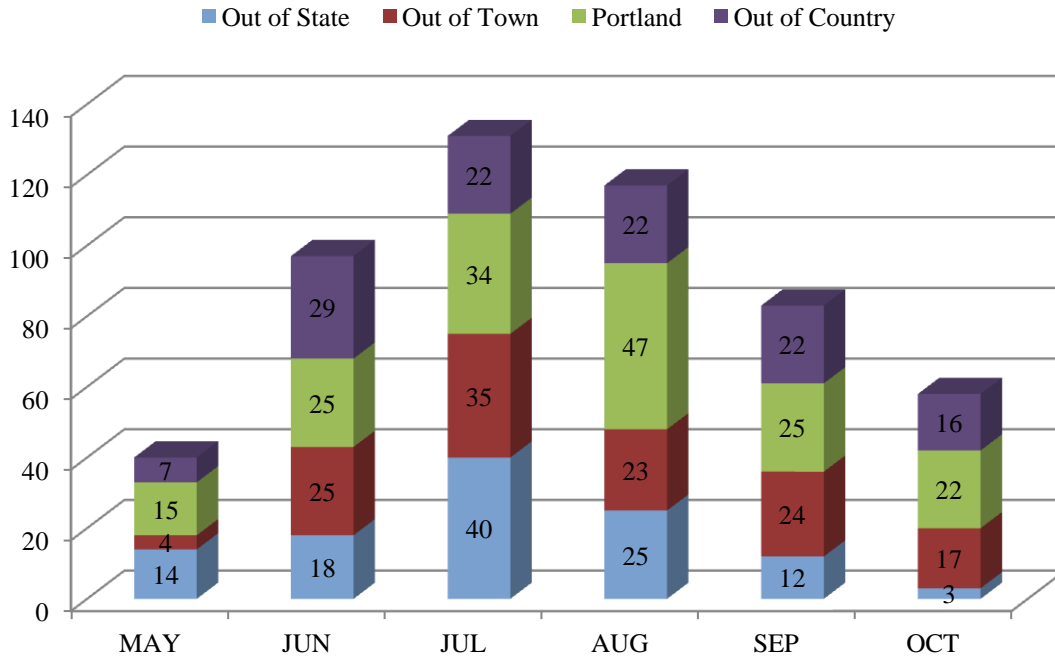
**STEPPING STONES** **FAMILIES**   **INDIVIDUALS**

<b>UNDUPLICATED FAMILIES/INDIVIDUALS:</b>	<b>6</b>	<b>13</b>
<b>TOTAL NEW INTAKES:</b>	<b>0</b>	<b>0</b>
<b>TOTAL HOUSING PLACEMENTS:</b>	<b>0</b>	<b>0</b>
• <b>TH PLACEMENTS</b>	<b>0</b>	<b>0</b>
• <b>PH PLACEMENTS</b>	<b>0</b>	<b>0</b>
<b>TOTAL RETURNS:</b>	<b>0</b>	<b>0</b>
<b>*EXPERIENCING HOMELESSNESS FOR THE 1<sup>ST</sup> TIME</b>	<b>0</b>	<b>0</b>
(*BASED ON SELF-REPORTING)		

CITY OF PORTLAND  
 HEALTH & HUMAN SERVICES DEPARTMENT  
 SOCIAL SERVICES DIVISION

**FAMILY SHELTER**  
 OCTOBER 2013  
 INTAKE STATISTICS

**Total Number of Individuals**



Intake statistic or new arrival is defined as an individual that has not stayed at the Shelter for a period of three (3) months/90-days or longer.

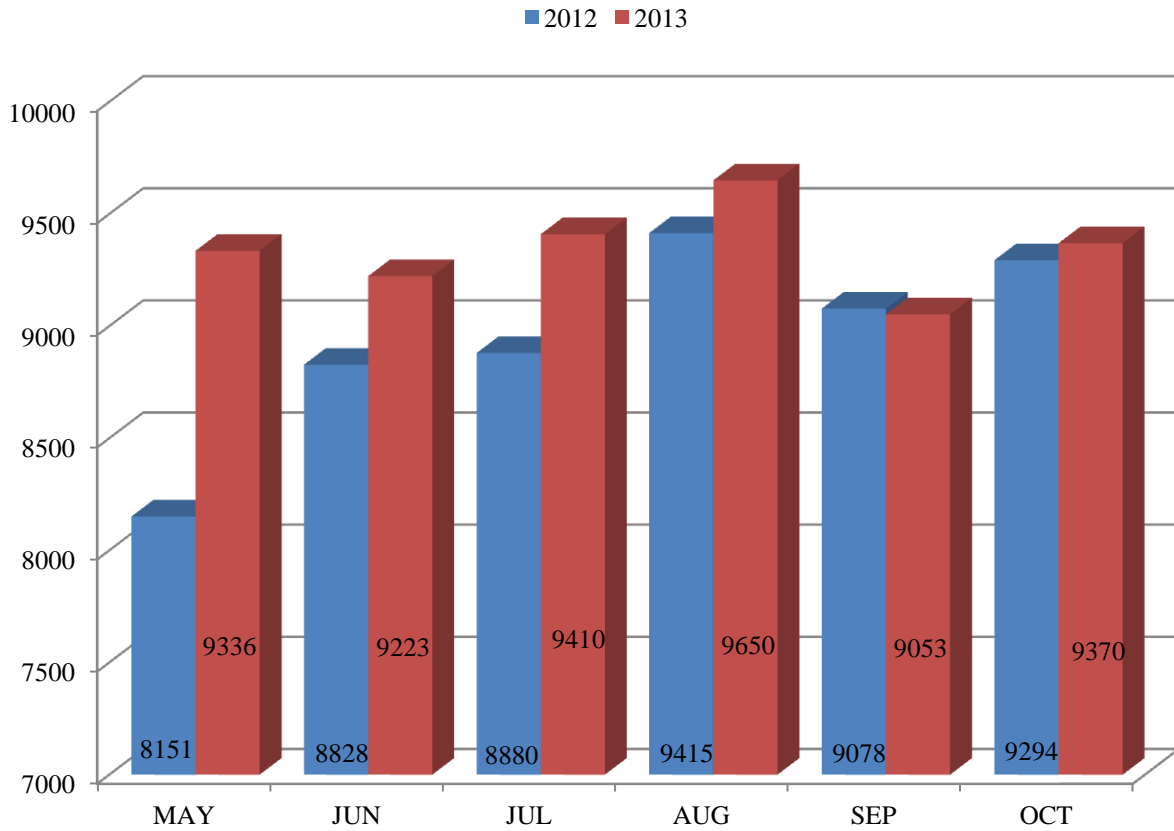
CITY OF PORTLAND  
HEALTH & HUMAN SERVICES DEPARTMENT  
SOCIAL SERVICES DIVISION

**FAMILY SHELTER  
OCTOBER 2013  
INDIVIDUALS**

MAINE TOWN		OUT-OF-STATE		OUT-OF-COUNTRY	
Raymond	5	South Carolina	3	Congo/Zaire	15
Limington	4			Rwanda	4
Buxton	3			Angola	3
Springvale	3				
Biddeford	2				
				Out-of-Country	22
Maine Towns	17	Out-of-State	3	Portland Intakes	16
				<b>TOTAL INTAKES</b>	<b>58</b>

	FAMILIES	INDIVIDUALS
<b>TOTAL NUMBER OF CLIENTS SERVED (Unduplicated Clients)</b>	<b>56</b>	<b>206</b>
<b>TOTAL NUMBER OF CLIENTS PLACED IN HOUSING</b>	<b>15</b>	<b>68</b>
<b>*EXPERIENCING HOMELESSNESS FOR THE 1<sup>ST</sup> TIME</b>	<b>8</b>	<b>34</b>
(*BASED ON SELF-REPORTING)		
*Refugees experiencing homelessness for the 1 <sup>st</sup> time		

**PORTLAND, CITY-WIDE  
OCTOBER 2013  
ADULT SHELTER STATISTICS**



	May	Jun	Jul	Aug	Sep	Oct
<b>2012</b>	8151	8828	9410	9415	9078	9294
<b>2013</b>	9336	9223	8880	9650	9053	9370
<b>Percent</b>	+15%	+4%	-6%	+3%	-3%	+1%

**MILESTONE FOUNDATION**

Substance Abuse Shelter                      **41 Beds**

**HEALTH & HUMAN SERVICES DEPARTMENT—SOCIAL SERVICES DIVISION**

Oxford Street Shelter                              **141 Beds**

**FLORENCE HOUSE**

Women’s Shelter                                      **25 Beds**

Safe Haven    **13 Beds**

**COMMUNITY OVERFLOW**

Preble Street Resource Center                      **75 Beds**

GA Overflow    **22 Beds**

**PORTLAND, CITY-WIDE  
OCTOBER 2013  
ADULT SHELTER STATISTICS**

	Oxford St Men	Oxford St Women	PS Overflow	GA Overflow	FH Women's Shelter	FH Safe Haven	Milestone	Beds Used Per Night
Capacity	141	141	75	17	25	13	41	453
Month Total	2703	1287	2348	438	851	387	1356	9370
Avg/Night	87	42	76	14	27	12	44	302
Highest Night	99	49	80	18	29	13	50	320
Lowest Night	70	34	75	0	26	11	40	280

**MILESTONE**

<b>UNDUPLICATED INDIVIDUALS:</b>	<b>144</b>
<b>TOTAL NEW INTAKES:</b>	<b>15</b>
<b>TOTAL RETURNS:</b>	<b>0</b>
<b>*EXPERIENCING HOMELESSNESS FOR THE 1<sup>ST</sup> TIME</b> (*BASED ON SELF-REPORTING)	<b>6</b>

**OXFORD STREET SHELTER & COMMUNITY OVERFLOW (MEN)**

<b>UNDUPLICATED INDIVIDUALS:</b>	<b>478</b>
<b>TOTAL NEW INTAKES:</b>	<b>158</b>
<b>TOTAL HOUSING PLACEMENTS:</b>	<b>52</b>
• <b>TH PLACEMENTS</b>	<b>0</b>
• <b>PH PLACEMENTS</b>	<b>52</b>
<b>TOTAL RETURNS:</b>	<b>5</b>
<b>*EXPERIENCING HOMELESSNESS FOR THE 1<sup>ST</sup> TIME</b> (*BASED ON SELF-REPORTING)	<b>37</b>

**OXFORD STREET SHELTER & COMMUNITY OVERFLOW (WOMEN)**

<b>UNDUPLICATED INDIVIDUALS:</b>	<b>120</b>
<b>TOTAL NEW INTAKES:</b>	<b>37</b>
<b>TOTAL HOUSING PLACEMENTS:</b>	<b>22</b>
• <b>TH PLACEMENTS</b>	<b>0</b>
• <b>PH PLACEMENTS</b>	<b>22</b>
<b>TOTAL RETURNS:</b>	<b>0</b>
<b>*EXPERIENCING HOMELESSNESS FOR THE 1<sup>ST</sup> TIME</b> (*BASED ON SELF-REPORTING)	<b>12</b>

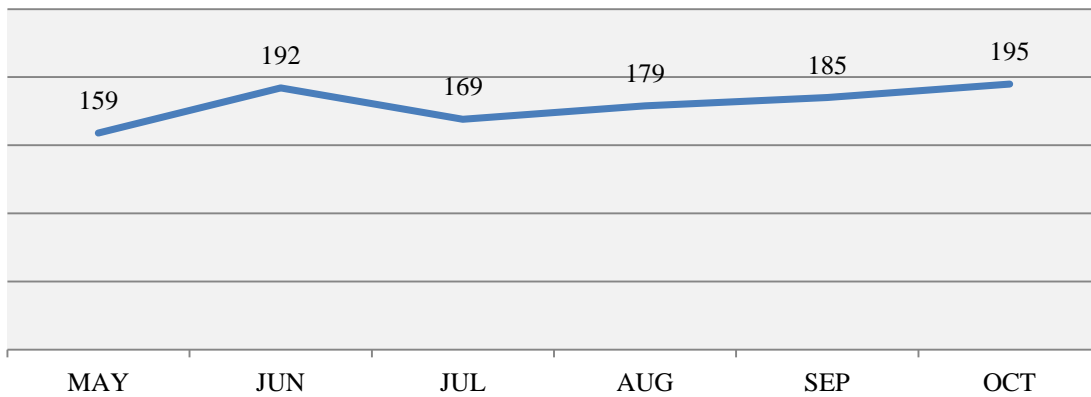
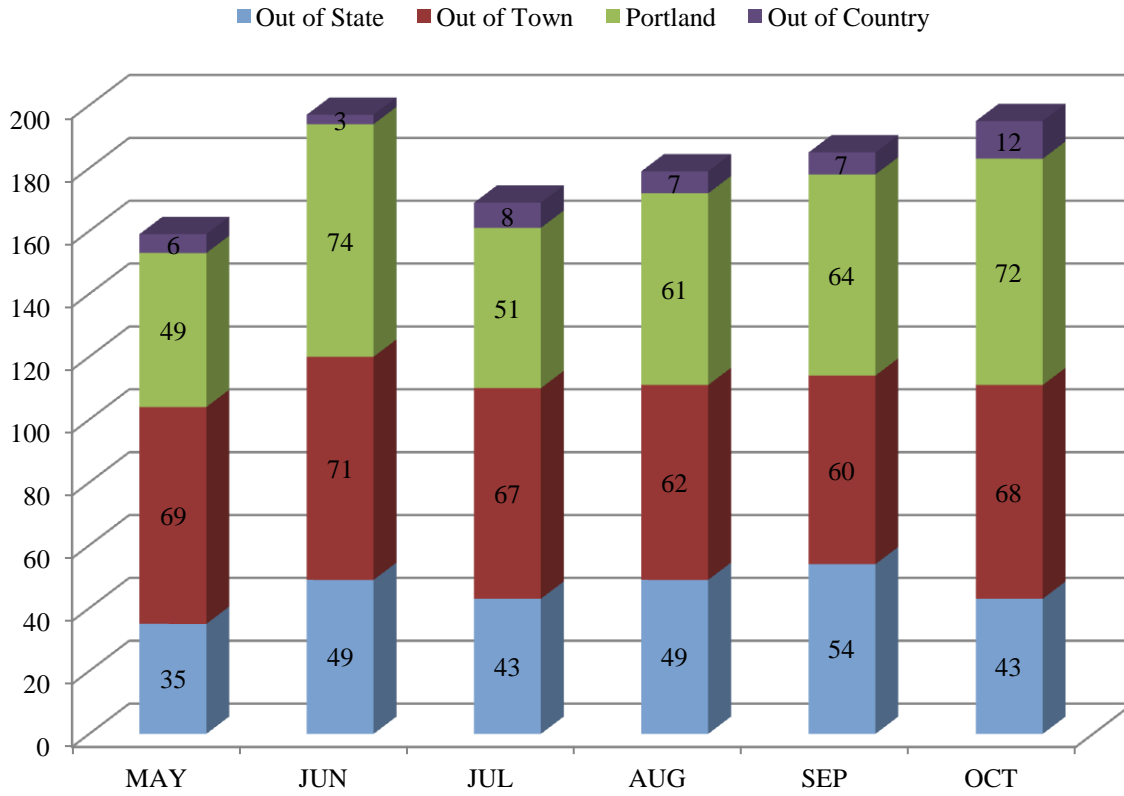
**FLORENCE HOUSE WOMEN'S SHELTER**

<b>UNDUPLICATED INDIVIDUALS:</b>	<b>55</b>
<b>TOTAL NEW INTAKES:</b>	<b>16</b>
<b>TOTAL HOUSING PLACEMENTS:</b>	<b>4</b>
• <b>TH PLACEMENTS</b>	<b>0</b>
• <b>PH PLACEMENTS</b>	<b>4</b>
<b>TOTAL RETURNS:</b>	<b>2</b>
<b>*EXPERIENCING HOMELESSNESS FOR THE 1<sup>ST</sup> TIME</b> (*BASED ON SELF-REPORTING)	<b>6</b>



CITY OF PORTLAND  
 HEALTH & HUMAN SERVICES DEPARTMENT  
 SOCIAL SERVICES DIVISION

**OXFORD STREET SHELTER**  
 OCTOBER 2013  
 INTAKE STATISTICS



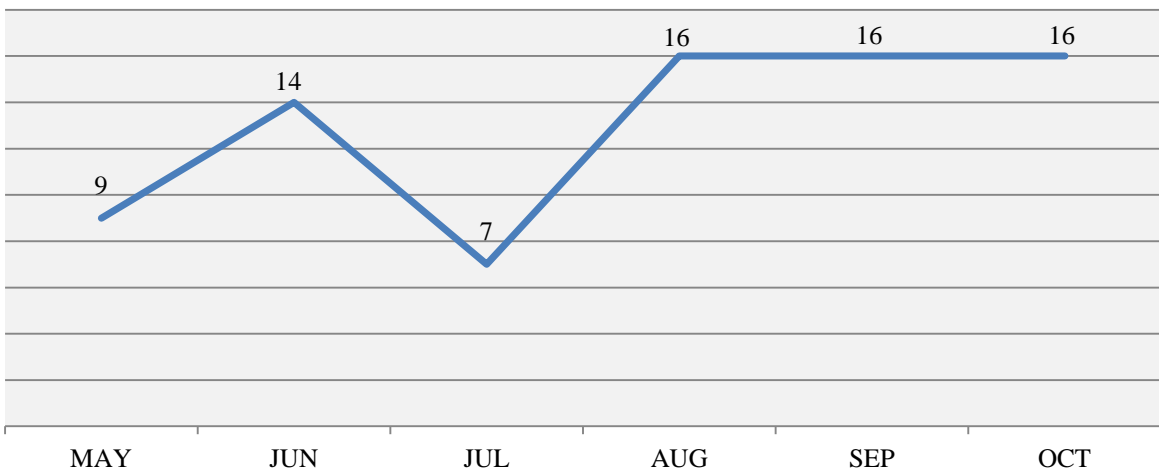
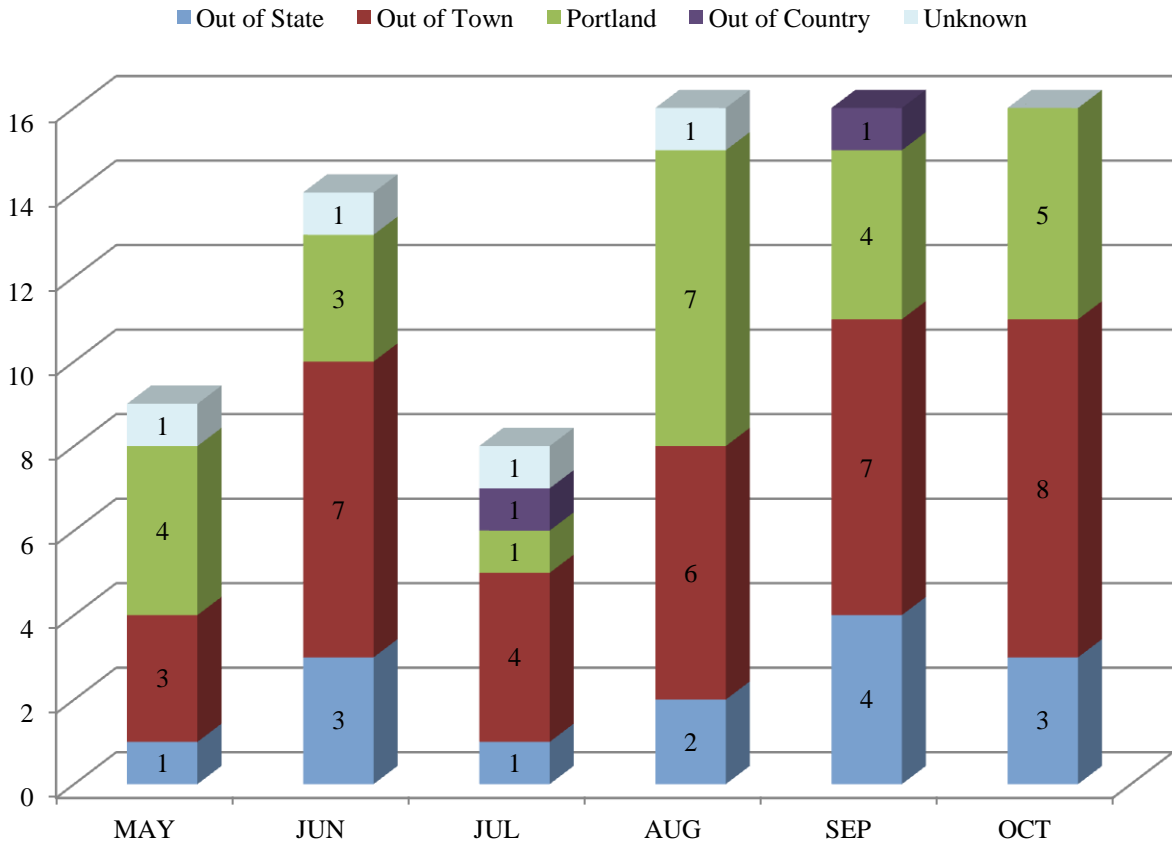
Intake statistic or new arrival is defined as an individual that has not stayed at the Shelter for a period of three (3) months/90-days or longer.

CITY OF PORTLAND  
HEALTH & HUMAN SERVICES DEPARTMENT  
SOCIAL SERVICES DIVISION

**OXFORD STREET SHELTER**  
OCTOBER 2013

MAINE TOWN		OUT-OF-STATE		OUT-OF-COUNTRY	
Biddeford	8	Massachusetts	8	Angola	4
South Portland	7	Florida	6	Burundi	4
Westbrook	7	New Hampshire	6	Congo	1
Bangor	3	New York	3	Cote d'Ivoire	1
Scarborough	3	Texas	3	Cuba	1
Windham	3	Arizona	2	Rwanda	1
Alfred	2	Ohio	2		
Augusta	2	Washington	2		
Gorham	2	Alaska	1		
Lewiston	2	California	1		
Sanford	2	Connecticut	1		
Standish	2	Georgia	1		
Warren	2	Maryland	1		
Acton	1	Michigan	1		
Bath	1	Nevada	1		
Berwick	1	Utah	1		
Brownville	1	Virginia	1		
Camden	1	Washington DC	1		
Cape Elizabeth	1	Wisconsin	1		
Dayton	1				
Dixmont	1				
Falmouth	1				
Fryeburg	1				
Gardiner	1				
Gray	1				
Hollis	1				
Kennebunk	1				
Lebanon	1				
Monhegan	1				
Oxford	1				
Sandy River	1				
Shapleigh	1				
Springvale	1				
Waterville	1				
West Paris	1				
Westfield	1				
				Out-of-Country	12
Maine Towns	68	Out-of-State	43	Portland Intakes	72
				<b>TOTAL INTAKES</b>	<b>195</b>

# FLORENCE HOUSE WOMEN'S SHELTER OCTOBER 2013 INTAKE STATISTICS



**FLORENCE HOUSE  
WOMEN'S SHELTER  
OCTOBER 2013  
INTAKE STATISTICS**

MAINE TOWN		OUT-OF-STATE		OUT-OF-COUNTRY	
Westbrook	3	Florida	1		
Augusta	1	Georgia	1		
Cumberland	1	Massachusetts	1		
Dexter	1				
Freeport	1				
Sanford	1				
				Out-of-Country	0
				Unknown	0
Maine Towns	8	Out-of-State	3	Portland Intakes	5
				<b>TOTAL INTAKES</b>	<b>16</b>

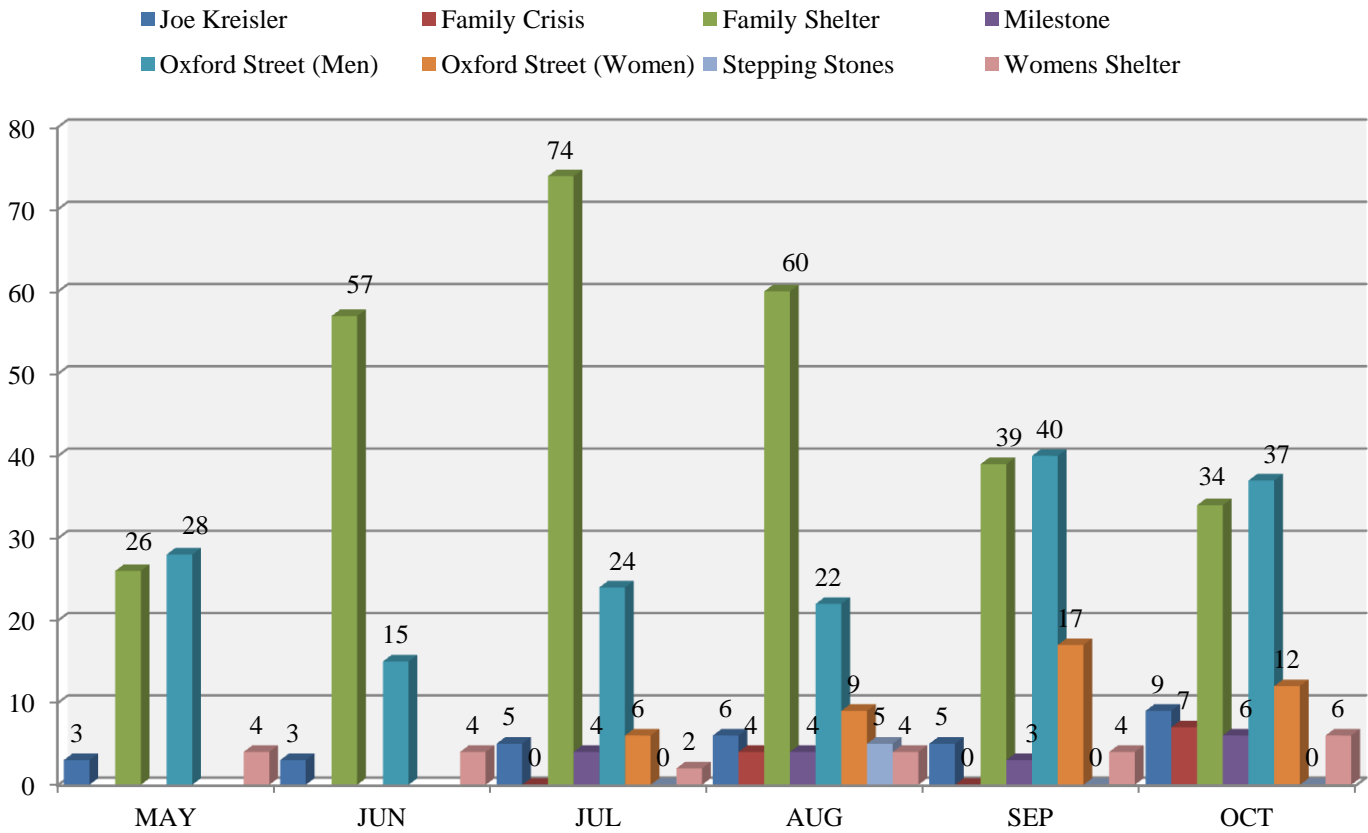
**TOTAL NUMBER OF WOMEN SERVED (Unduplicated Clients) 55**

**TOTAL NUMBER OF WOMEN PLACED IN HOUSING 4**

**TOTAL NUMBER OF WOMEN THAT RETURNED 2**

**\*EXPERIENCING HOMELESSNESS FOR THE 1<sup>ST</sup> TIME 6**  
 (\*BASED ON SELF-REPORTING)

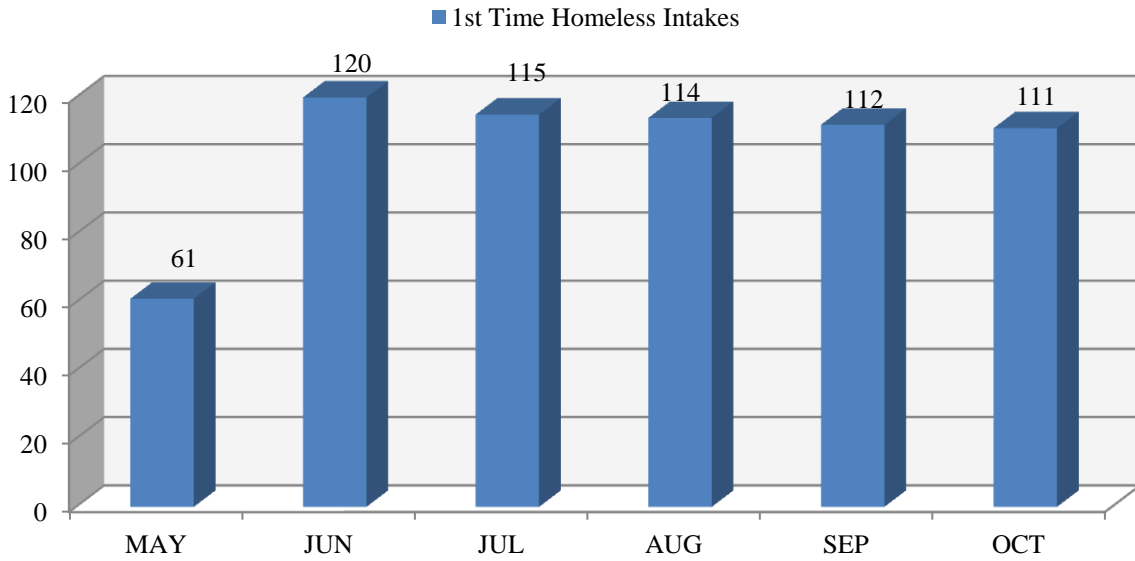
**PORTLAND, CITY-WIDE  
OCTOBER 2013  
1<sup>ST</sup> TIME HOMELESSNESS STATISTICS  
(BASED ON SELF-REPORTING)**



**OCTOBER 2013  
1<sup>ST</sup> TIME HOMELESSNESS STATISTICS % OF ALL INTAKES  
(BASED ON SELF-REPORTING)**

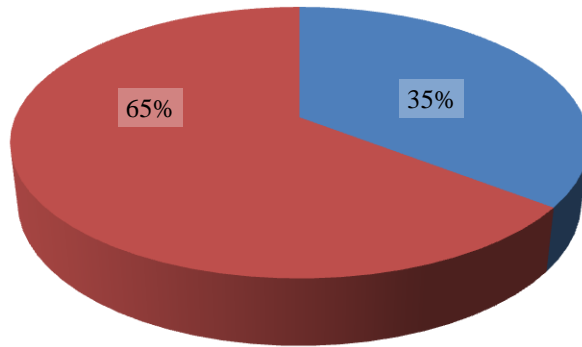
	1 <sup>st</sup> Time Homeless Intakes	% of Total First Time Homeless Intakes
Family Crisis	7	6%
Family Shelter	34	31%
Joe Kreisler	9	8%
Milestone	6	5%
Oxford Street (Men)	37	34%
Oxford Street (Women)	12	11%
Stepping Stones	0	0%
Women's Shelter	6	5%
<b>TOTAL</b>	<b>111</b>	

**PORTLAND, CITY-WIDE**  
**OCTOBER 2013**  
**1<sup>ST</sup> TIME HOMELESSNESS STATISTICS**  
**(BASED ON SELF-REPORTING)**



**OCTOBER 2013**  
**Percentage of Intakes**

■ 1st Time Homeless Intakes    ■ All Other Intakes

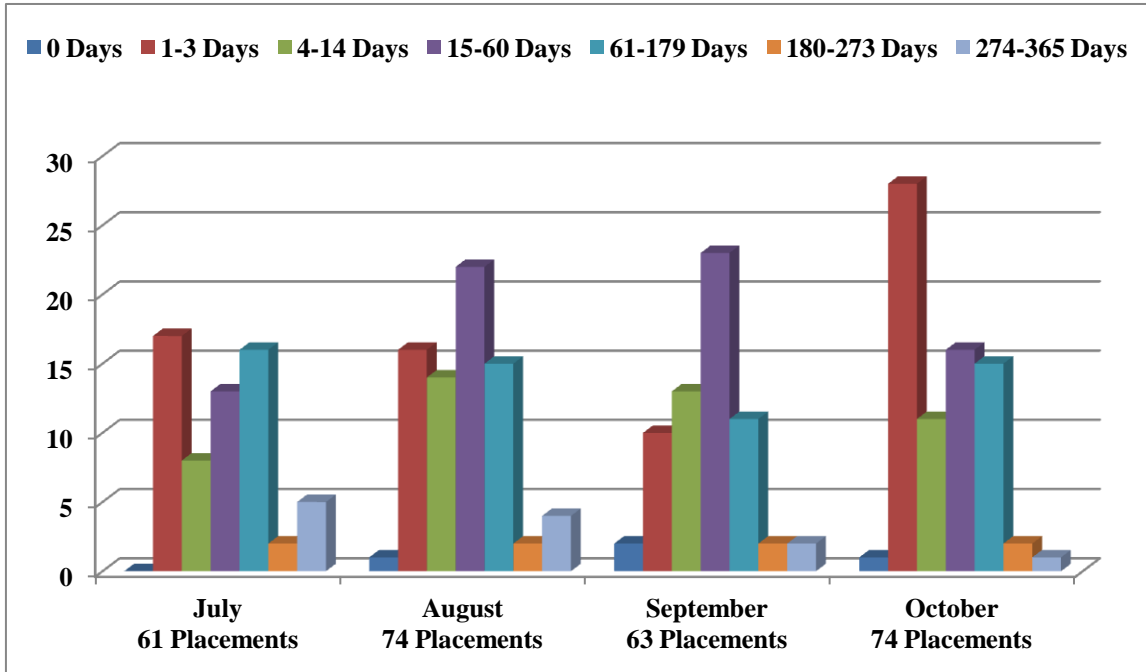


**Total Intakes:** 313  
**1<sup>ST</sup> Time Homelessness:** 111

CITY OF PORTLAND  
HEALTH AND HUMAN SERVICES  
SOCIAL SERVICES DIVISION  
OXFORD STREET SHELTER

**HOUSING PLACEMENTS BY LENGTH OF STAY  
FY 2014**

(Check-ins within prior 365 days)



	<b>1-3 Days</b>	<b>4-14 Days</b>	<b>15-60 Days</b>	<b>61-179 Days</b>	<b>180-273 Days</b>	<b>274-365 Days</b>
<b>July</b>	17	8	13	16	2	5
<b>August</b>	17	14	22	15	2	4
<b>September</b>	12	13	23	11	2	2
<b>October</b>	30	11	16	15	2	1

	<b>1-3 Days</b>	<b>4-14 Days</b>	<b>15-60 Days</b>	<b>61-179 Days</b>	<b>180-273 Days</b>	<b>274-365 Days</b>
<b>July</b>	28%	13%	22%	26%	3%	8%
<b>August</b>	23%	19%	30%	20%	3%	5%
<b>September</b>	19%	21%	37%	17%	3%	3%
<b>October</b>	40%	15%	21%	20%	3%	1%